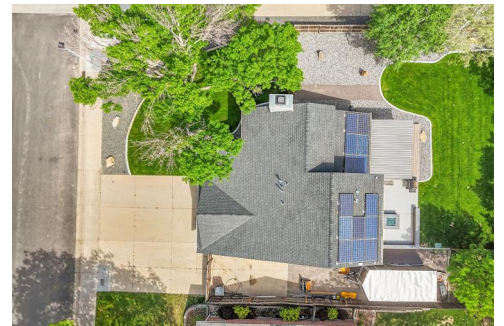
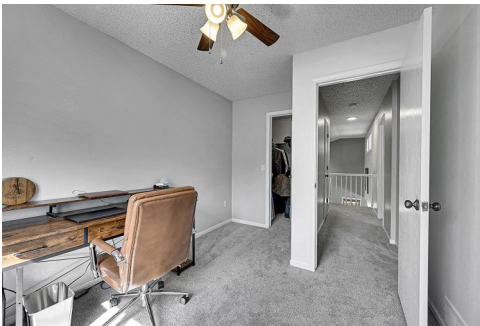


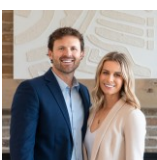




4704 West 6th Street Road
Greeley, CO 80634
COMMUNITY: Westmoor West



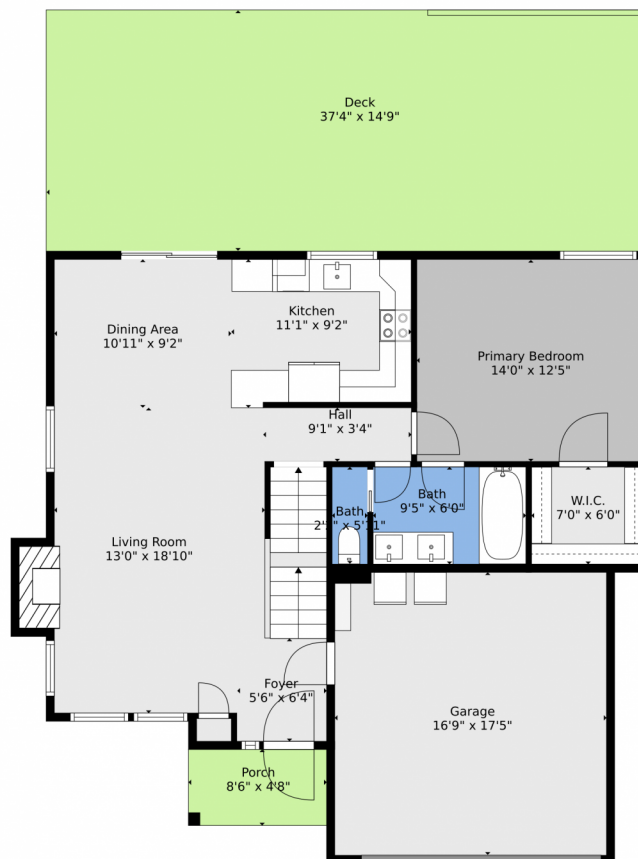
 Single Family  2130 SQFT  4 Beds  3 Baths  2 Car  0.2 Acre



Scott & Carli Nitzel
970-590-5450
scott@nexthomefoundations.com



4704 West 6th Street Road, Greeley, CO 80634 — Main

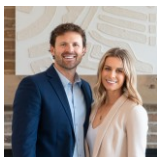


TOTAL: 1951 sq. ft
BELOW GROUND: 660 sq. ft, FLOOR 2: 852 sq. ft, FLOOR 3: 439 sq. ft
EXCLUDED AREAS: UTILITY: 78 sq. ft, PORCH: 40 sq. ft, DECK: 555 sq. ft,
GARAGE: 291 sq. ft, FIREPLACE: 13 sq. ft, OPEN TO BELOW: 274 sq. ft

Floor Plan Created By V1photos.com, Measurements Deamed Highly Reliable But Not Guaranteed.



Disclaimer: Sizes and Dimensions are Approximate, Actual May Vary.



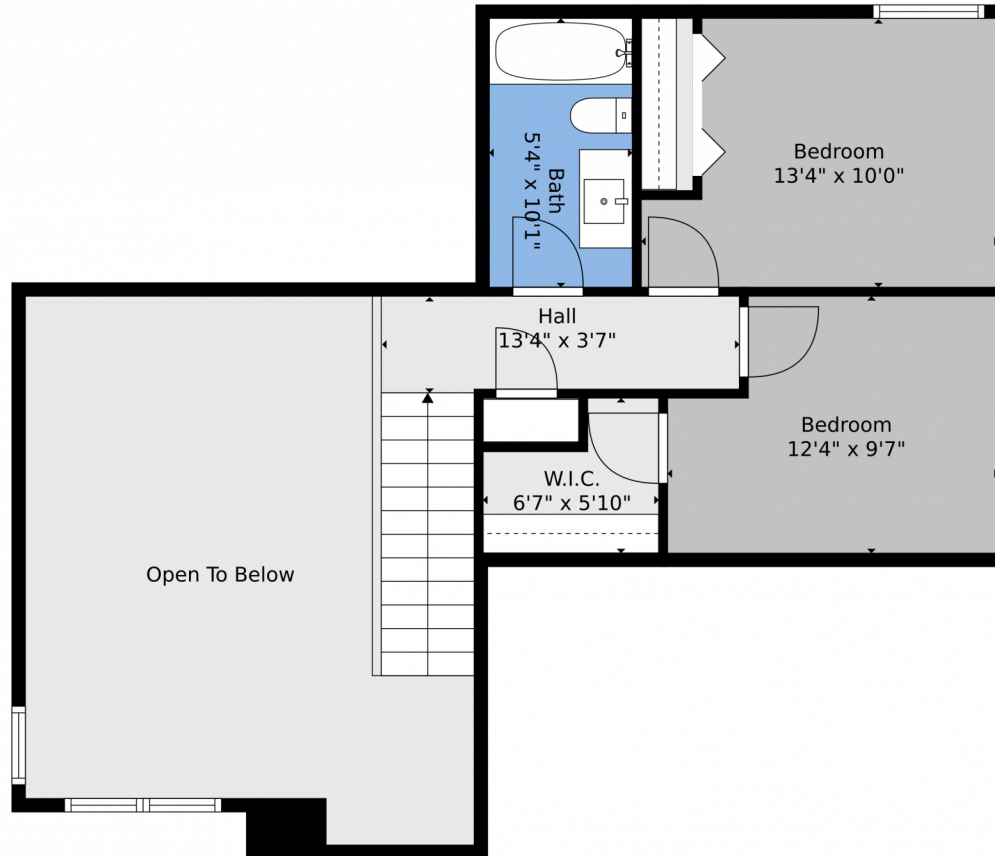
Scott & Carli Nitzel
970-590-5450
scott@nexthomefoundations.com



Scan code
for more
property
details



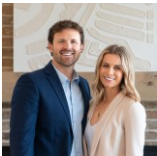
4704 West 6th Street Road, Greeley, CO 80634 — 2nd Level



TOTAL: 1951 sq. ft
BELOW GROUND: 660 sq. ft, FLOOR 2: 852 sq. ft, FLOOR 3: 439 sq. ft
EXCLUDED AREAS: UTILITY: 78 sq. ft, PORCH: 40 sq. ft, DECK: 555 sq. ft,
GARAGE: 291 sq. ft, FIREPLACE: 13 sq. ft, OPEN TO BELOW: 274 sq. ft
Floor Plan Created By V1photos.com, Measurements Deamed Highly Reliable But Not Guaranteed.



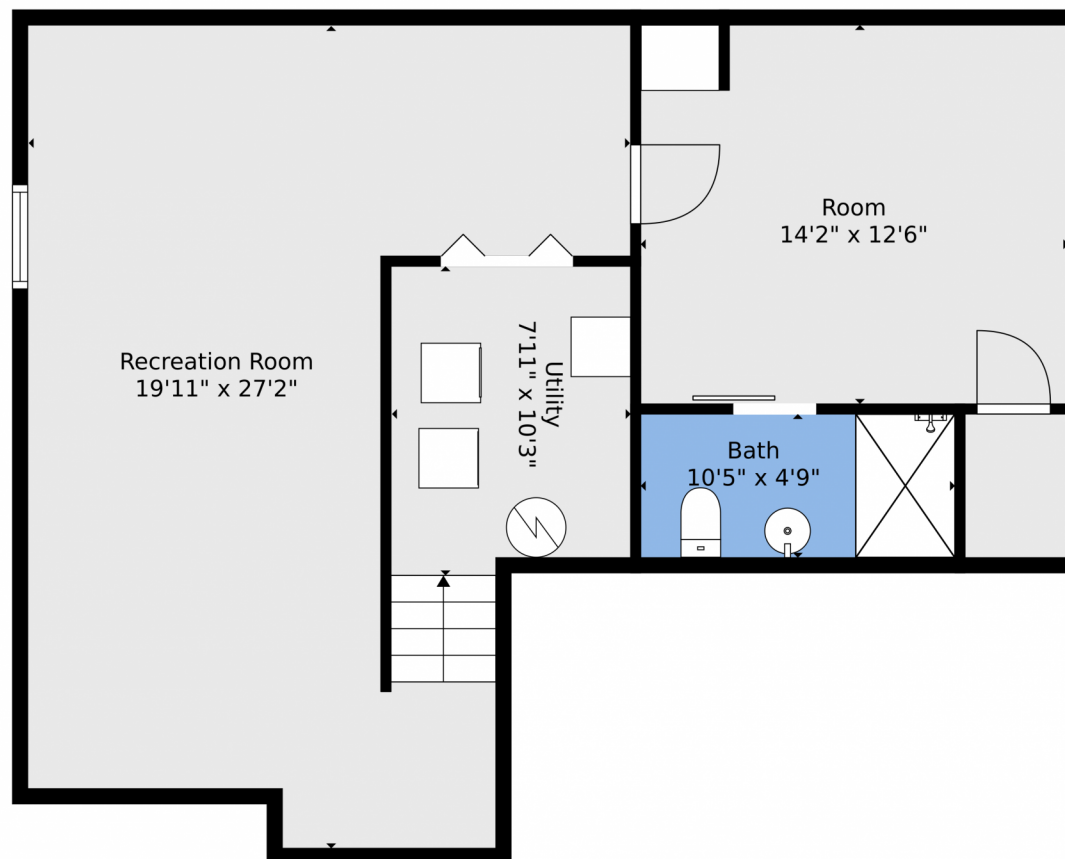
Disclaimer: Sizes and Dimensions are Approximate, Actual May Vary.



Scott & Carli Nitzel
970-590-5450
scott@nexthomefoundations.com



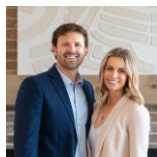
4704 West 6th Street Road, Greeley, CO 80634 — Basement



TOTAL: 1951 sq. ft
BELOW GROUND: 660 sq. ft, FLOOR 2: 852 sq. ft, FLOOR 3: 439 sq. ft
EXCLUDED AREAS: UTILITY: 78 sq. ft, PORCH: 40 sq. ft, DECK: 555 sq. ft,
GARAGE: 291 sq. ft, FIREPLACE: 13 sq. ft, OPEN TO BELOW: 274 sq. ft
Floor Plan Created By V1photos.com, Measurements Deamed Highly Reliable But Not Guaranteed.



Disclaimer: Sizes and Dimensions are Approximate, Actual May Vary.



Scott & Carli Nitzel
970-590-5450
scott@nexthomefoundations.com



Scan code
for more
property
details



4704 West 6th Street Road, Greeley, CO 80634 — All Levels

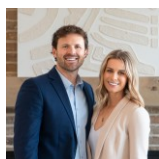


TOTAL: 1951 sq. ft
BELOW GROUND: 660 sq. ft, FLOOR 2: 852 sq. ft, FLOOR 3: 439 sq. ft
EXCLUDED AREAS: UTILITY: 78 sq. ft, PORCH: 40 sq. ft, DECK: 555 sq. ft,
GARAGE: 291 sq. ft, FIREPLACE: 13 sq. ft, OPEN TO BELOW: 274 sq. ft

Floor Plan Created By V1photos.com, Measurements Deamed Highly Reliable But Not Guaranteed.



Disclaimer: Sizes and Dimensions are Approximate, Actual May Vary.



Scott & Carli Nitzel
970-590-5450
scott@nexthomefoundations.com



Scan code
for more
property
details

