



Single Family



6478 SQFT



5 Beds



3/1 Baths



3 Car



0.5 Acre

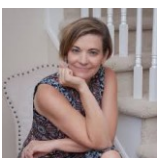
PROPERTY DETAILS

Experience golden mornings and serene evenings in this upgraded ranch-style home in Timber Ridge. The main level features an open concept with rich Florence Maple hardwood floors.

The designer kitchen boasts White Spring leathered granite, a Wolf six-burner gas range, and a Sub-Zero refrigerator, complemented by Woodrow Maple cabinetry. Expansive east-facing windows fill the space with light, perfect for morning coffee.

Double French doors lead to a spacious back deck overlooking a half-acre lot with a slate patio and built-in fire pit, ideal for gatherings or quiet evenings.

The main-floor primary suite includes a five-piece bath and oversized walk-in closet. The finished garden-level basement offers a recreational area, two additional bedrooms, and a three-quarter bath.



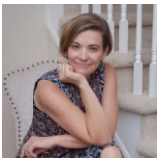
Jill Clark
720-581-5035
jillclarkmoves@kw.com



Scan code
for more
property
details



Practical features include a three-car garage. Enjoy lower taxes and HOA fees, saving over \$9,000 annually compared to similar homes. **Photos coming Friday**



Jill Clark
720-581-5035
jillclarkmoves@kw.com

Scan code
for more
property
details



5388 Water Oak Circle, Castle Rock, CO 80108 – Main

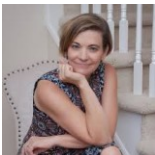


TOTAL: 5117 sq. ft
BELOW GROUND: 1903 sq. ft, FLOOR 2: 3214 sq. ft
EXCLUDED AREAS: PATIO: 849 sq. ft, UTILITY: 303 sq. ft, EXERCISE ROOM: 905 sq. ft,
GARAGE: 703 sq. ft, PORCH: 219 sq. ft, COVERED DECK: 393 sq. ft,
FIREPLACE: 21 sq. ft

Floor Plan Created By V1photos.com, Measurements Deamed Highly Reliable But Not Guaranteed.



Disclaimer: Sizes and Dimensions are Approximate, Actual May Vary.



Jill Clark
720-581-5035
jillclarkmoves@kw.com



Scan code
for more
property
details



5388 Water Oak Circle, Castle Rock, CO 80108 — Basement

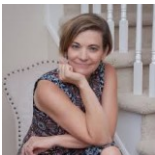


TOTAL: 5117 sq. ft
BELOW GROUND: 1903 sq. ft, FLOOR 2: 3214 sq. ft
EXCLUDED AREAS: PATIO: 849 sq. ft, UTILITY: 303 sq. ft, EXERCISE ROOM: 905 sq. ft,
GARAGE: 703 sq. ft, PORCH: 219 sq. ft, COVERED DECK: 393 sq. ft,
FIREPLACE: 21 sq. ft

Floor Plan Created By V1photos.com, Measurements Deamed Highly Reliable But Not Guaranteed.



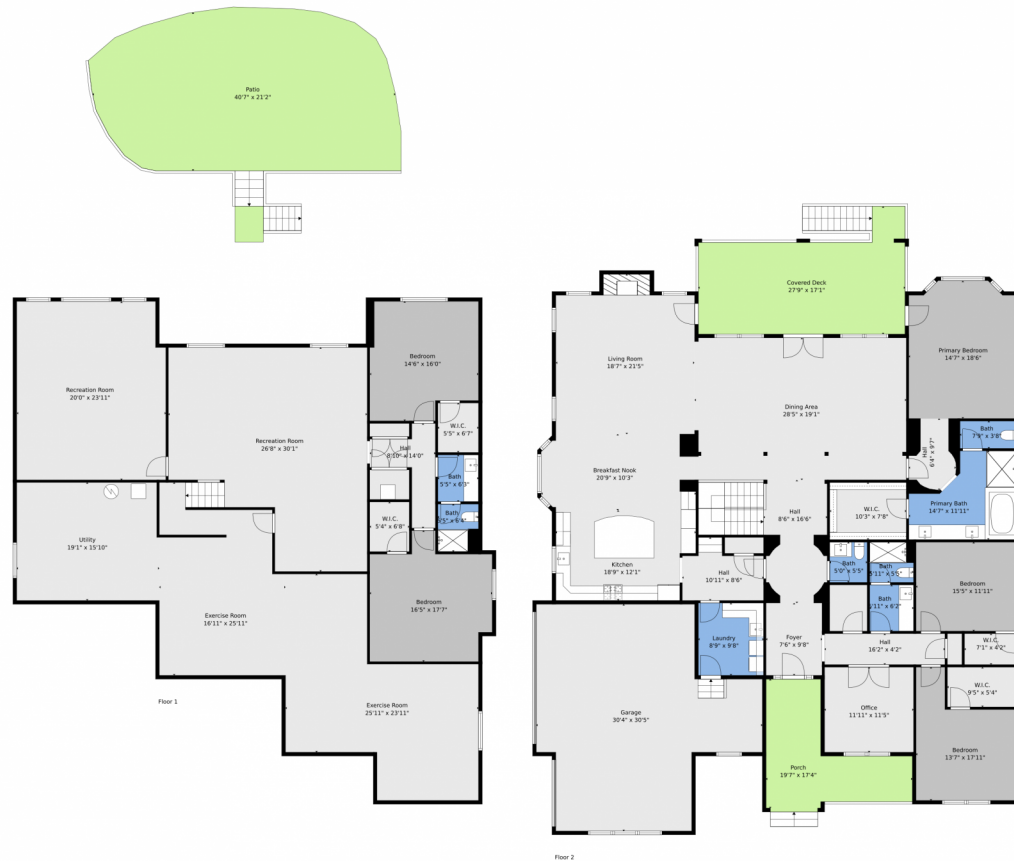
Disclaimer: Sizes and Dimensions are Approximate, Actual May Vary.



Jill Clark
720-581-5035
jillclarkmoves@kw.com



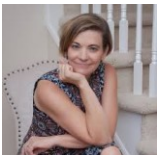
5388 Water Oak Circle, Castle Rock, CO 80108 — All Levels



TOTAL: 5117 sq. ft
BELOW GROUND: 1903 sq. ft, FLOOR 2: 3214 sq. ft
EXCLUDED AREAS: PATIO: 849 sq. ft, UTILITY: 303 sq. ft, EXERCISE ROOM: 905 sq. ft,
GARAGE: 703 sq. ft, PORCH: 219 sq. ft, COVERED DECK: 393 sq. ft,
FIREPLACE: 21 sq. ft

Floor Plan Created By V1photos.com, Measurements Deamed Highly Reliable But Not Guaranteed.

Disclaimer: Sizes and Dimensions are Approximate, Actual May Vary.



Jill Clark
720-581-5035
jillclarkmoves@kw.com



Scan code
for more
property
details

