




 Single Family

 1200 SQFT

 2 Beds

 2 Baths



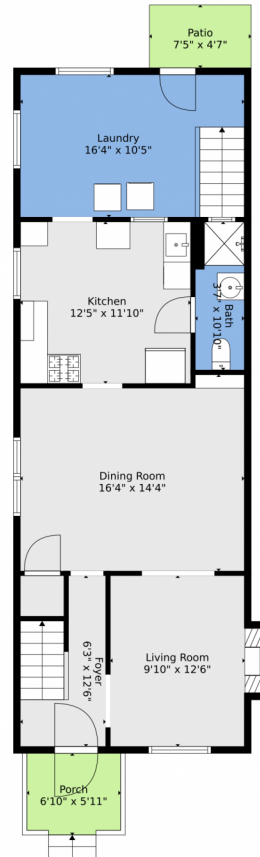
Taylor Haas
303-665-7368
taylorh@coloradorp.com
<https://www.coloradorp.com/available-rental-properties-denv>



Scan code
for more
property
details



3227 North Pecos Street #3225, Denver, CO 80211 — Main



TOTAL: 1252 sq. ft
BELOW GROUND: 22 sq. ft, FLOOR 2: 803 sq. ft, FLOOR 3: 427 sq. ft
EXCLUDED AREAS: STORAGE: 130 sq. ft, BASEMENT: 184 sq. ft, PORCH: 46 sq. ft,
PATIO: 34 sq. ft, FIREPLACE: 10 sq. ft

Floor Plan Created By V1photos.com, Measurements Deamed Highly Reliable But Not Guaranteed.



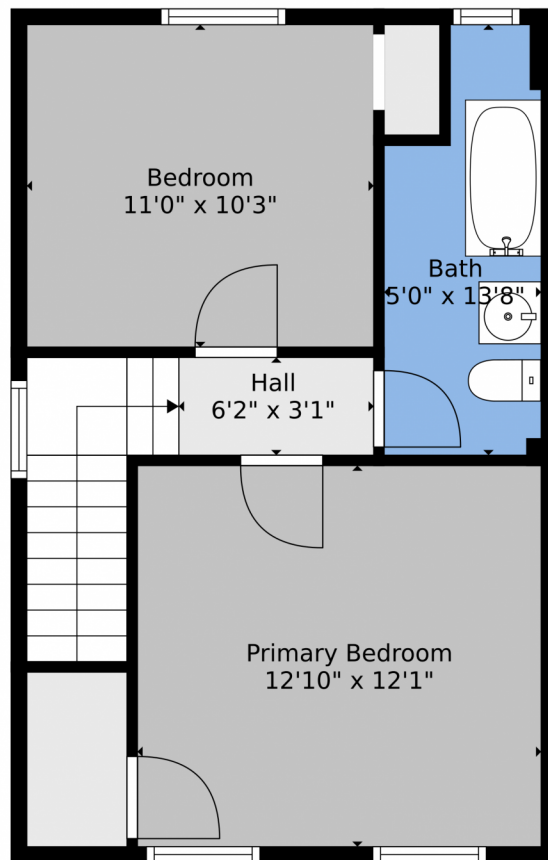
Disclaimer: Sizes and Dimensions are Approximate, Actual May Vary.



Taylor Haas
303-665-7368
taylorh@coloradorpm.com
<https://www.coloradorpm.com/available-rental-properties-denver>



3227 North Pecos Street #3225, Denver, CO 80211 — 2nd Level



TOTAL: 1252 sq. ft
BELOW GROUND: 22 sq. ft, FLOOR 2: 803 sq. ft, FLOOR 3: 427 sq. ft
EXCLUDED AREAS: STORAGE: 130 sq. ft, BASEMENT: 184 sq. ft, PORCH: 46 sq. ft,
PATIO: 34 sq. ft, FIREPLACE: 10 sq. ft

Floor Plan Created By V1photos.com, Measurements Deamed Highly Reliable But Not Guaranteed.



Disclaimer: Sizes and Dimensions are Approximate, Actual May Vary.



Taylor Haas

303-665-7368

taylorh@coloradorpm.com

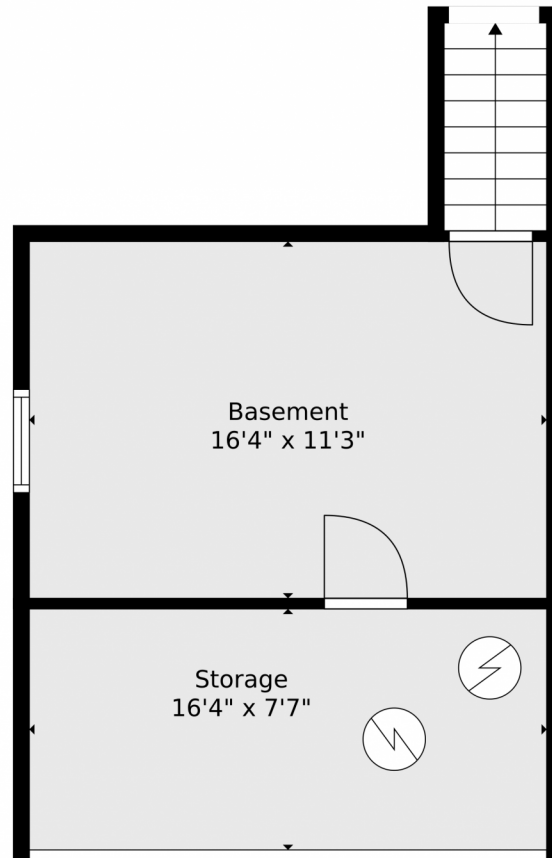
<https://www.coloradorpm.com/available-rental-properties-denver>



Scan code
for more
property
details



3227 North Pecos Street #3225, Denver, CO 80211 — Lower Level



TOTAL: 1252 sq. ft
BELOW GROUND: 22 sq. ft, FLOOR 2: 803 sq. ft, FLOOR 3: 427 sq. ft
EXCLUDED AREAS: STORAGE: 130 sq. ft, BASEMENT: 184 sq. ft, PORCH: 46 sq. ft,
PATIO: 34 sq. ft, FIREPLACE: 10 sq. ft

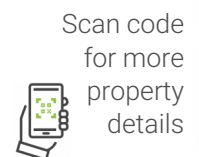
Floor Plan Created By V1photos.com, Measurements Deamed Highly Reliable But Not Guaranteed.



Disclaimer: Sizes and Dimensions are Approximate, Actual May Vary.



Taylor Haas
303-665-7368
taylorh@coloradorpm.com
<https://www.coloradorpm.com/available-rental-properties-denver>



Scan code
for more
property
details



3227 North Pecos Street #3225, Denver, CO 80211 — All Levels



TOTAL: 1252 sq. ft
BELOW GROUND: 22 sq. ft, FLOOR 2: 803 sq. ft, FLOOR 3: 427 sq. ft
EXCLUDED AREAS: STORAGE: 130 sq. ft, BASEMENT: 184 sq. ft, PORCH: 46 sq. ft,
PATIO: 34 sq. ft, FIREPLACE: 10 sq. ft

Floor Plan Created By V1photos.com, Measurements Deamed Highly Reliable But Not Guaranteed.



Disclaimer: Sizes and Dimensions are Approximate, Actual May Vary.



Taylor Haas

303-665-7368

taylorh@coloradorm.com

<https://www.coloradorm.com/available-rental-properties-denver>



Scan code
for more
property
details

