



Single Family



1264 SQFT

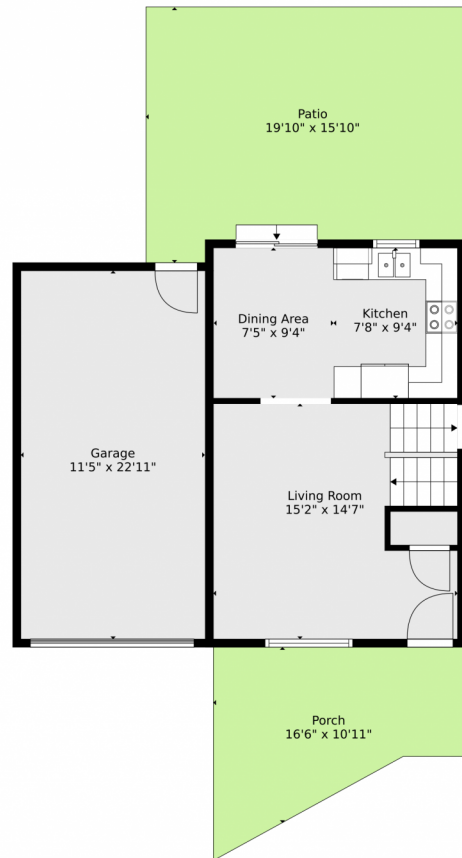


Suzanne Ekeler
970-590-4841
suzanne.ekeler@windermere.com



Scan code
for more
property
details





TOTAL: 1137 sq. ft
BELOW GROUND: 367 sq. ft, FLOOR 2: 369 sq. ft, FLOOR 3: 401 sq. ft
EXCLUDED AREAS: UTILITY: 33 sq. ft, GARAGE: 262 sq. ft, PORCH: 150 sq. ft,
PATIO: 292 sq. ft

Floor Plan Created By V1photos.com, Measurements Deamed Highly Reliable But Not Guaranteed.



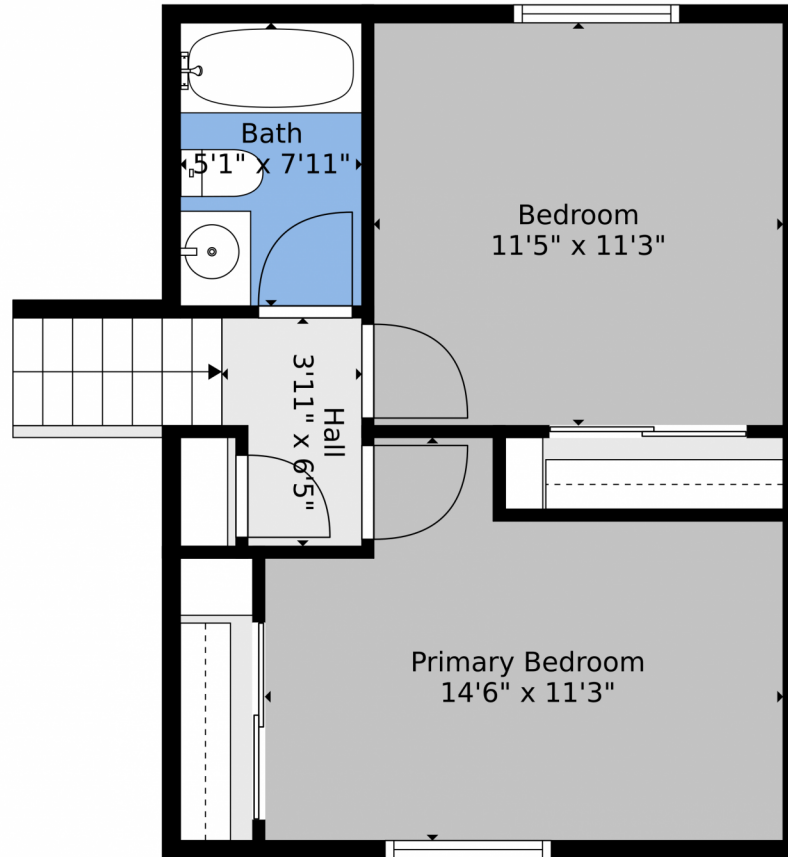
Disclaimer: Sizes and Dimensions are Approximate, Actual May Vary.



Suzanne Ekeler
970-590-4841
suzanne.ekeler@windermere.com



1205 2nd Street, Eaton, CO 80615 — 2nd Level



TOTAL: 1137 sq. ft
BELOW GROUND: 367 sq. ft, FLOOR 2: 369 sq. ft, FLOOR 3: 401 sq. ft
EXCLUDED AREAS: UTILITY: 33 sq. ft, GARAGE: 262 sq. ft, PORCH: 150 sq. ft,
PATIO: 292 sq. ft

Floor Plan Created By V1photos.com, Measurements Deamed Highly Reliable But Not Guaranteed.



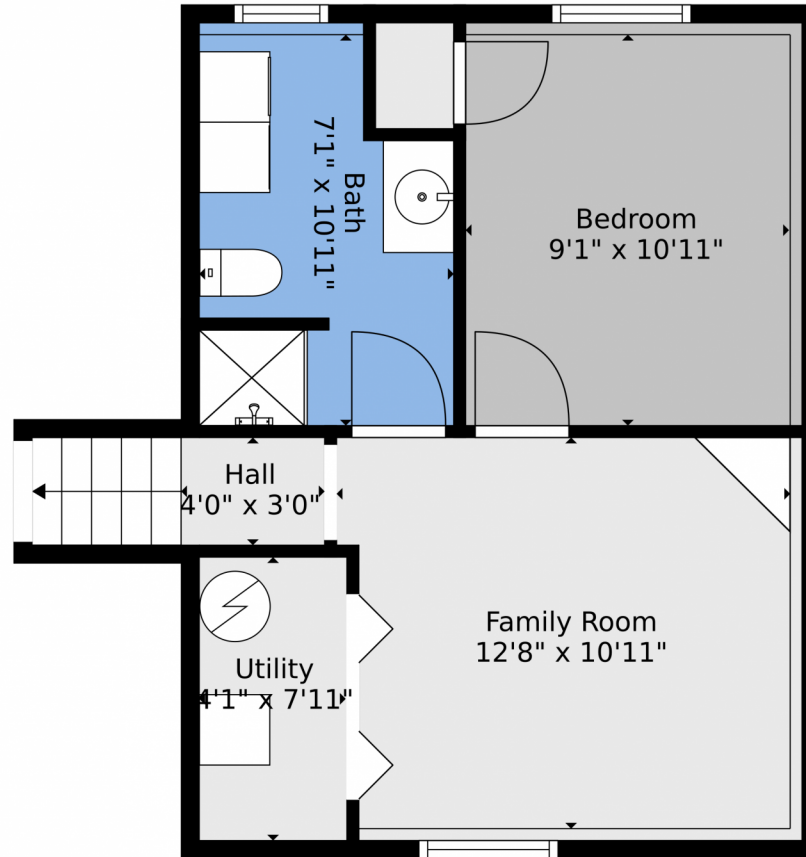
Disclaimer: Sizes and Dimensions are Approximate, Actual May Vary.



Suzanne Ekeler
970-590-4841
suzanne.ekeler@windermere.com



1205 2nd Street, Eaton, CO 80615 — Lower Level



TOTAL: 1137 sq. ft
BELOW GROUND: 367 sq. ft, FLOOR 2: 369 sq. ft, FLOOR 3: 401 sq. ft
EXCLUDED AREAS: UTILITY: 33 sq. ft, GARAGE: 262 sq. ft, PORCH: 150 sq. ft,
PATIO: 292 sq. ft

Floor Plan Created By V1photos.com, Measurements Deamed Highly Reliable But Not Guaranteed.



Disclaimer: Sizes and Dimensions are Approximate, Actual May Vary.



Suzanne Ekeler
970-590-4841
suzanne.ekeler@windermere.com



Scan code
for more
property
details



1205 2nd Street, Eaton, CO 80615 — All Levels



TOTAL: 1137 sq. ft
 BELOW GROUND: 367 sq. ft, FLOOR 2: 369 sq. ft, FLOOR 3: 401 sq. ft
 EXCLUDED AREAS: UTILITY: 33 sq. ft, GARAGE: 262 sq. ft, PORCH: 150 sq. ft,
 PATIO: 292 sq. ft

Floor Plan Created By V1photos.com, Measurements Deamed Highly Reliable But Not Guaranteed.



Disclaimer: Sizes and Dimensions are Approximate, Actual May Vary.



Suzanne Ekeler
 970-590-4841
suzanne.ekeler@windermere.com



Scan code
 for more
 property
 details

