





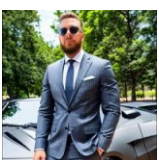
 Single Family

 2080 SQFT

 5 Beds

 3 Baths

 0.24 Acre



**Steven Schober**  
303-587-9303  
stevie@wealthbyre.com





**TOTAL: 1677 sq. ft**  
FLOOR 1: 733 sq. ft, FLOOR 2: 944 sq. ft  
EXCLUDED AREAS: UTILITY: 37 sq. ft, GARAGE: 440 sq. ft, COVERED PATIO: 243 sq. ft,  
PORCH: 49 sq. ft, WALLS: 157 sq. ft

Floor Plan Created By V1photos.com, Measurements Deamed Highly Reliable But Not Guaranteed.



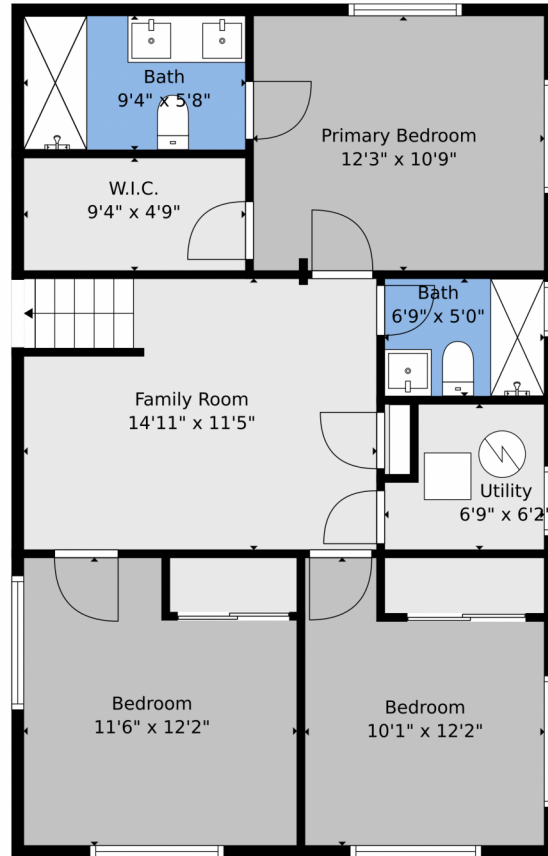
Disclaimer: Sizes and Dimensions are Approximate, Actual May Vary.



**Steven Schober**  
303-587-9303  
stevie@wealthbyre.com



# 1173 Xenon Street, Golden, CO 80401 – Lower Level



**TOTAL: 1677 sq. ft**  
FLOOR 1: 733 sq. ft, FLOOR 2: 944 sq. ft  
EXCLUDED AREAS: UTILITY: 37 sq. ft, GARAGE: 440 sq. ft, COVERED PATIO: 243 sq. ft,  
PORCH: 49 sq. ft, WALLS: 157 sq. ft

Floor Plan Created By V1photos.com. Measurements Deamed Highly Reliable But Not Guaranteed.



Disclaimer: Sizes and Dimensions are Approximate, Actual May Vary.



**Steven Schober**  
303-587-9303  
stevie@wealthbyre.com





# 1173 Xenon Street, Golden, CO 80401 – All Levels



Floor 1

Floor 2

**TOTAL: 1677 sq. ft**  
FLOOR 1: 733 sq. ft, FLOOR 2: 944 sq. ft  
EXCLUDED AREAS: UTILITY: 37 sq. ft, GARAGE: 440 sq. ft, COVERED PATIO: 243 sq. ft,  
PORCH: 49 sq. ft, WALLS: 157 sq. ft

Floor Plan Created By V1photos.com, Measurements Deamed Highly Reliable But Not Guaranteed.



Disclaimer: Sizes and Dimensions are Approximate, Actual May Vary.



**Steven Schober**  
303-587-9303  
stevie@wealthbyre.com



Scan code  
for more  
property  
details

