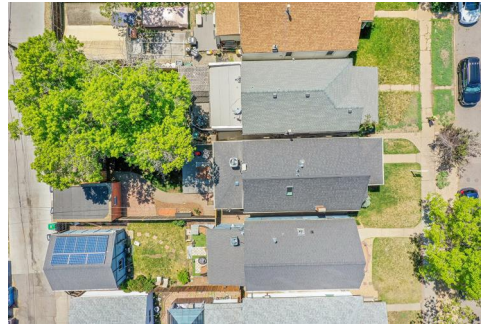





1208 South Pennsylvania Street
Denver, CO 80210
COMMUNITY: Platt Park



 Single Family

 1633 SQFT

 3 Beds

 2 Baths



Jeff Lovato
720-854-4834
jefflovato@kw.com
<http://www.thelovatogroup.com>



1208 South Pennsylvania Street, Denver, CO 80210 — Main



TOTAL: 1171 sq. ft
BELOW GROUND: 16 sq. ft, FLOOR 2: 876 sq. ft, FLOOR 3: 279 sq. ft
EXCLUDED AREAS: BASEMENT: 163 sq. ft, GARAGE: 196 sq. ft, DECK: 188 sq. ft,
PATIO: 108 sq. ft, PORCH: 104 sq. ft, LOW CEILING: 204 sq. ft,
UTILITY: 12 sq. ft, WALLS: 185 sq. ft

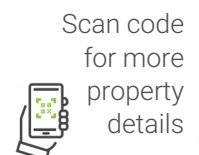
Floor Plan Created By V1photos.com, Measurements Deamed Highly Reliable But Not Guaranteed.



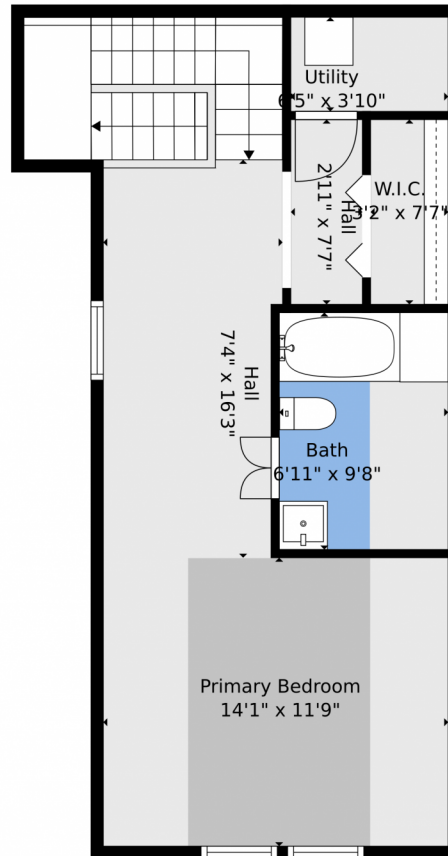
Disclaimer: Sizes and Dimensions are Approximate, Actual May Vary.



Jeff Lovato
720-854-4834
jefflovato@kw.com
<http://www.thelovatogroup.com>



1208 South Pennsylvania Street, Denver, CO 80210 – 2nd Level



TOTAL: 1171 sq. ft
BELOW GROUND: 16 sq. ft, FLOOR 2: 876 sq. ft, FLOOR 3: 279 sq. ft
EXCLUDED AREAS: BASEMENT: 163 sq. ft, GARAGE: 196 sq. ft, DECK: 188 sq. ft,
PATIO: 108 sq. ft, PORCH: 104 sq. ft, LOW CEILING: 204 sq. ft,
UTILITY: 12 sq. ft, WALLS: 185 sq. ft

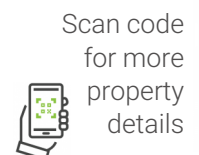
Floor Plan Created By V1photos.com, Measurements Deamed Highly Reliable But Not Guaranteed.



Disclaimer: Sizes and Dimensions are Approximate, Actual May Vary.



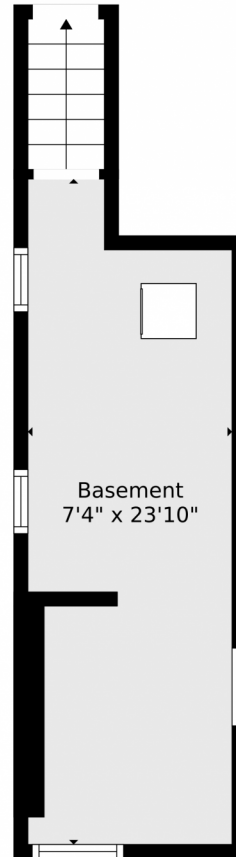
Jeff Lovato
720-854-4834
jefflovato@kw.com
<http://www.thelovatogroup.com>



Scan code
for more
property
details



1208 South Pennsylvania Street, Denver, CO 80210 — Basement



TOTAL: 1171 sq. ft
BELOW GROUND: 16 sq. ft, FLOOR 2: 876 sq. ft, FLOOR 3: 279 sq. ft
EXCLUDED AREAS: BASEMENT: 163 sq. ft, GARAGE: 196 sq. ft, DECK: 188 sq. ft,
PATIO: 108 sq. ft, PORCH: 104 sq. ft, LOW CEILING: 204 sq. ft,
UTILITY: 12 sq. ft, WALLS: 185 sq. ft

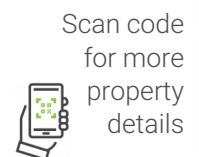
Floor Plan Created By V1photos.com, Measurements Deamed Highly Reliable But Not Guaranteed.



Disclaimer: Sizes and Dimensions are Approximate, Actual May Vary.



Jeff Lovato
720-854-4834
jefflovato@kw.com
<http://www.thelovatogroup.com>



1208 South Pennsylvania Street, Denver, CO 80210 — All Levels



TOTAL: 1171 sq. ft
BELOW GROUND: 16 sq. ft, FLOOR 2: 876 sq. ft, FLOOR 3: 279 sq. ft
EXCLUDED AREAS: BASEMENT: 163 sq. ft, GARAGE: 196 sq. ft, DECK: 188 sq. ft,
PATIO: 108 sq. ft, PORCH: 104 sq. ft, LOW CEILING: 204 sq. ft,
UTILITY: 12 sq. ft, WALLS: 185 sq. ft

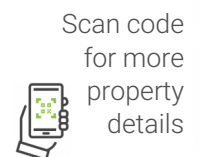
Floor Plan Created By V1photos.com, Measurements Deamed Highly Reliable But Not Guaranteed.



Disclaimer: Sizes and Dimensions are Approximate, Actual May Vary.



Jeff Lovato
720-854-4834
jefflovato@kw.com
<http://www.thelovatogroup.com>



Scan code
for more
property
details

