

Single Family



2420 SQFT



3 Beds



2 Baths



4 Car



4.99 Acre

PROPERTY DETAILS

Private Mountain Estate with Dream Garage



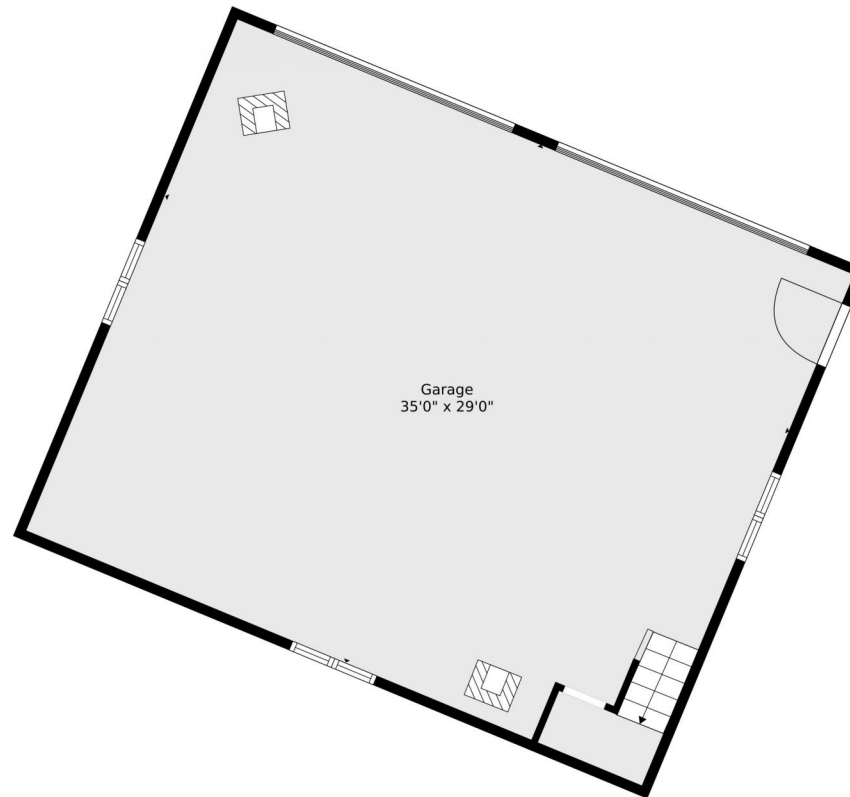
Matt Bachus
 720-644-9363
 matt@tuppersteam.com



Scan code
 for more
 property
 details



2654 Sinton Road, Evergreen, CO 80439 — Detached Garage



Floor Plan Created By V1photos.com. Measurements Deamed Highly Reliable But Not Guaranteed.



Disclaimer: Sizes and Dimensions are Approximate, Actual May Vary.



Matt Bachus
720-644-9363
matt@tuppersteam.com



2654 Sinton Road, Evergreen, CO 80439 — Lower Level



Floor Plan Created By V1photos.com. Measurements Deamed Highly Reliable But Not Guaranteed.

Disclaimer: Sizes and Dimensions are Approximate, Actual May Vary.



Matt Bachus
720-644-9363
matt@tuppersteam.com





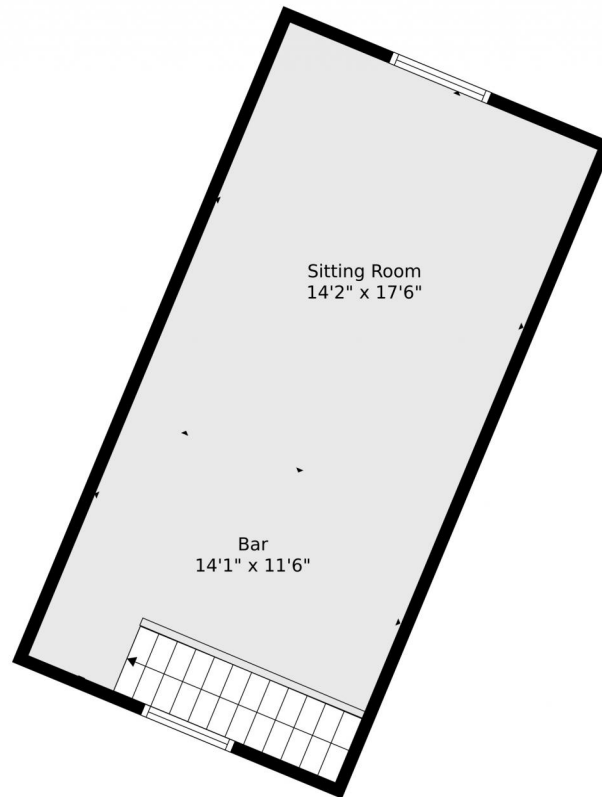
Disclaimer: Sizes and Dimensions are Approximate, Actual May Vary.



Matt Bachus
720-644-9363
matt@tuppersteam.com



2654 Sinton Road, Evergreen, CO 80439 — Detached Garage



Floor Plan Created By V1photos.com. Measurements Deamed Highly Reliable But Not Guaranteed.



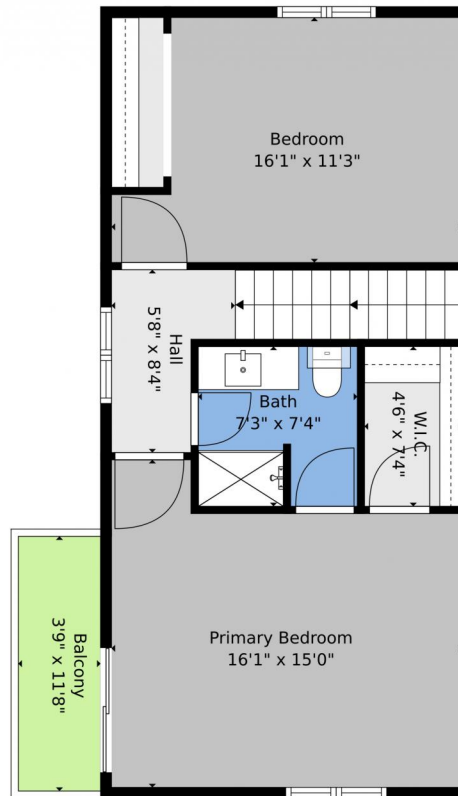
Disclaimer: Sizes and Dimensions are Approximate, Actual May Vary.



Matt Bachus
720-644-9363
matt@tuppersteam.com



2654 Sinton Road, Evergreen, CO 80439 — 2nd Level



Floor Plan Created By V1photos.com. Measurements Deamed Highly Reliable But Not Guaranteed.



Disclaimer: Sizes and Dimensions are Approximate, Actual May Vary.



Matt Bachus
720-644-9363
matt@tuppersteam.com



2654 Sinton Road, Evergreen, CO 80439 — All Levels



Floor Plan Created By V1photos.com. Measurements Deamed Highly Reliable But Not Guaranteed.

Disclaimer: Sizes and Dimensions are Approximate, Actual May Vary.



Matt Bachus
720-644-9363
matt@tuppersteam.com



Scan code
for more
property
details