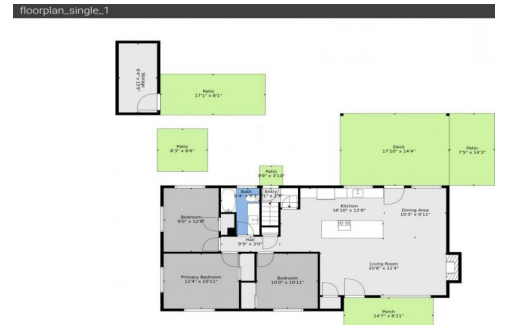




6526 South Elmwood Street
Littleton, CO 80120



Single Family



2292 SQFT



4 Beds



3 Baths



1 Car



0.23 Acre



Olga Telesin
720-365-4651
olga@exitrealtydtc.com



Scan code
for more
property
details



6526 South Elmwood Street, Littleton, CO 80120 — Main



TOTAL: 2051 sq. ft
FLOOR 1: 992 sq. ft, FLOOR 2: 1059 sq. ft
EXCLUDED AREAS: STORAGE: 86 sq. ft, PORCH: 101 sq. ft, DECK: 254 sq. ft,
PATIO: 330 sq. ft, FIREPLACE: 12 sq. ft, WALLS: 158 sq. ft

Floor Plan Created By V1photos.com, Measurements Deamed Highly Reliable But Not Guaranteed.



Disclaimer: Sizes and Dimensions are Approximate, Actual May Vary.



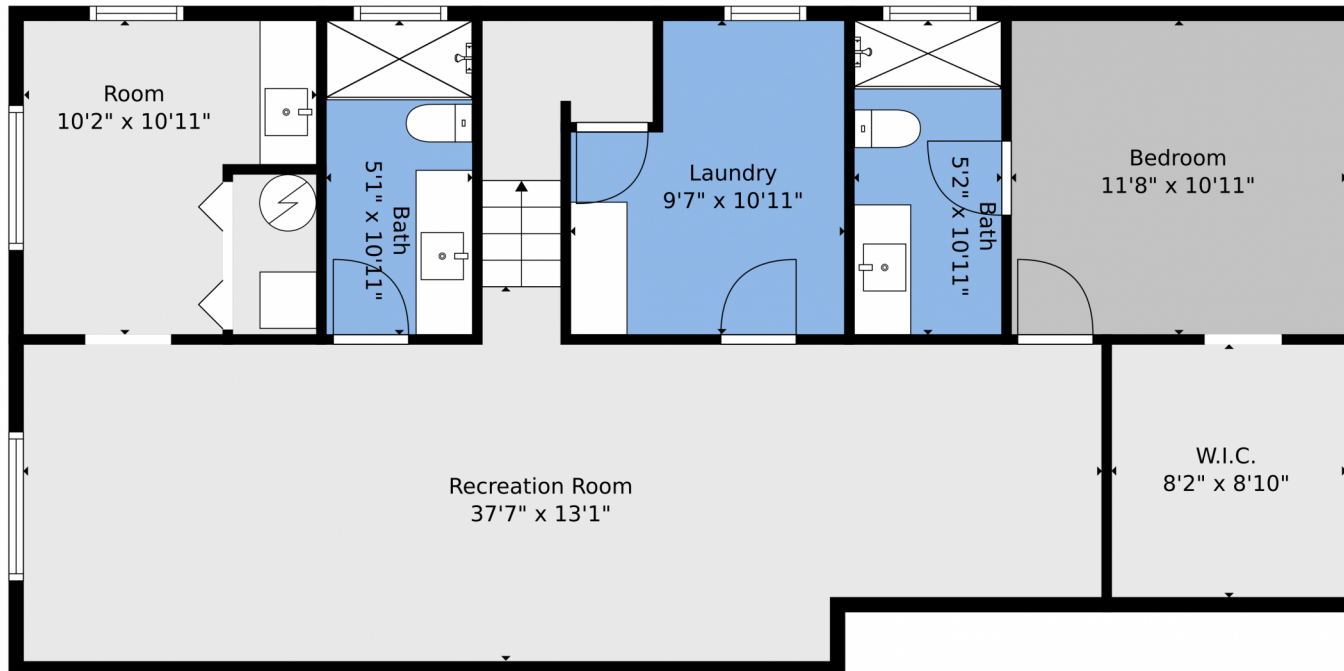
Olga Telesin
720-365-4651
olga@exitrealtydtc.com



Scan code
for more
property
details



6526 South Elmwood Street, Littleton, CO 80120 — Basement



TOTAL: 2051 sq. ft
FLOOR 1: 992 sq. ft, FLOOR 2: 1059 sq. ft
EXCLUDED AREAS: STORAGE: 86 sq. ft, PORCH: 101 sq. ft, DECK: 254 sq. ft,
PATIO: 330 sq. ft, FIREPLACE: 12 sq. ft, WALLS: 158 sq. ft
Floor Plan Created By V1photos.com, Measurements Deamed Highly Reliable But Not Guaranteed.



Disclaimer: Sizes and Dimensions are Approximate, Actual May Vary.



Olga Telesin
720-365-4651
olga@exitrealtydtc.com



Scan code
for more
property
details



6526 South Elmwood Street, Littleton, CO 80120 — All Levels



TOTAL: 2051 sq. ft
FLOOR 1: 992 sq. ft, FLOOR 2: 1059 sq. ft
EXCLUDED AREAS: STORAGE: 86 sq. ft, PORCH: 101 sq. ft, DECK: 254 sq. ft,
PATIO: 330 sq. ft, FIREPLACE: 12 sq. ft, WALLS: 158 sq. ft

Floor Plan Created By V1photos.com, Measurements Deamed Highly Reliable But Not Guaranteed.



Disclaimer: Sizes and Dimensions are Approximate, Actual May Vary.



Olga Telesin
720-365-4651
olga@exitrealtydtc.com



Scan code
for more
property
details

