



Single Family



1380 SQFT



**Philip Cooper**  
970-232-4844  
pcooper@thegroupinc.com



Scan code  
for more  
property  
details



# 705 E. Drake Road #N37, Fort Collin, CO 80525 — Main



**TOTAL: 1309 sq. ft**  
FLOOR 1: 615 sq. ft, FLOOR 2: 694 sq. ft  
EXCLUDED AREAS: CARPORT: 286 sq. ft, PATIO: 116 sq. ft, COVERED PATIO: 106 sq. ft,  
PORCH: 40 sq. ft, SHED: 48 sq. ft, WALLS: 137 sq. ft

Floor Plan Created By V1photos.com, Measurements Deamed Highly Reliable But Not Guaranteed.



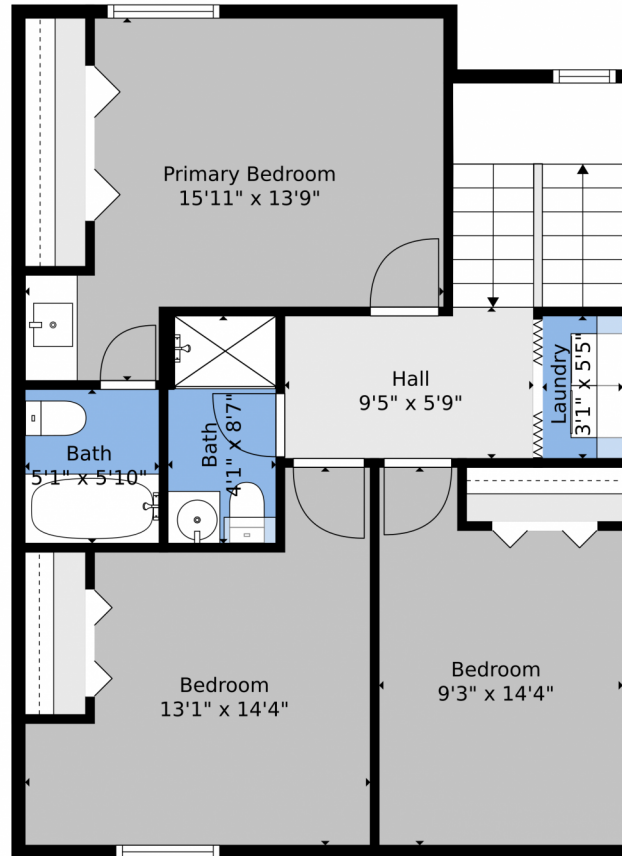
Disclaimer: Sizes and Dimensions are Approximate, Actual May Vary.



**Philip Cooper**  
970-232-4844  
pcooper@thegroupinc.com



## 705 E. Drake Road #N37, Fort Collin, CO 80525 – 2nd Level



**TOTAL: 1309 sq. ft**  
FLOOR 1: 615 sq. ft, FLOOR 2: 694 sq. ft  
EXCLUDED AREAS: CARPORT: 286 sq. ft, PATIO: 116 sq. ft, COVERED PATIO: 106 sq. ft,  
PORCH: 40 sq. ft, SHED: 48 sq. ft, WALLS: 137 sq. ft

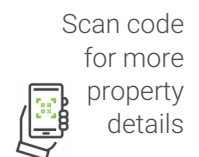
Floor Plan Created By V1photos.com, Measurements Deamed Highly Reliable But Not Guaranteed.



Disclaimer: Sizes and Dimensions are Approximate, Actual May Vary.



**Philip Cooper**  
970-232-4844  
pcooper@thegroupinc.com



Scan code  
for more  
property  
details



# 705 E. Drake Road #N37, Fort Collin, CO 80525 — All Levels



**TOTAL: 1309 sq. ft**  
FLOOR 1: 615 sq. ft, FLOOR 2: 694 sq. ft  
EXCLUDED AREAS: CARPORT: 286 sq. ft, PATIO: 116 sq. ft, COVERED PATIO: 106 sq. ft,  
PORCH: 40 sq. ft, SHED: 48 sq. ft, WALLS: 137 sq. ft

Floor Plan Created By V1photos.com, Measurements Deamed Highly Reliable But Not Guaranteed.



Disclaimer: Sizes and Dimensions are Approximate, Actual May Vary.



**Philip Cooper**  
970-232-4844  
pcooper@thegroupinc.com

