



10571 Garfield Street
Thornton, CO 80233
COMMUNITY: Colony Glen



Single Family



2312 SQFT



4 Beds



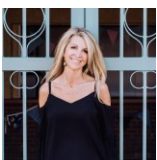
3/1 Baths



2 Car



0.09 Acre



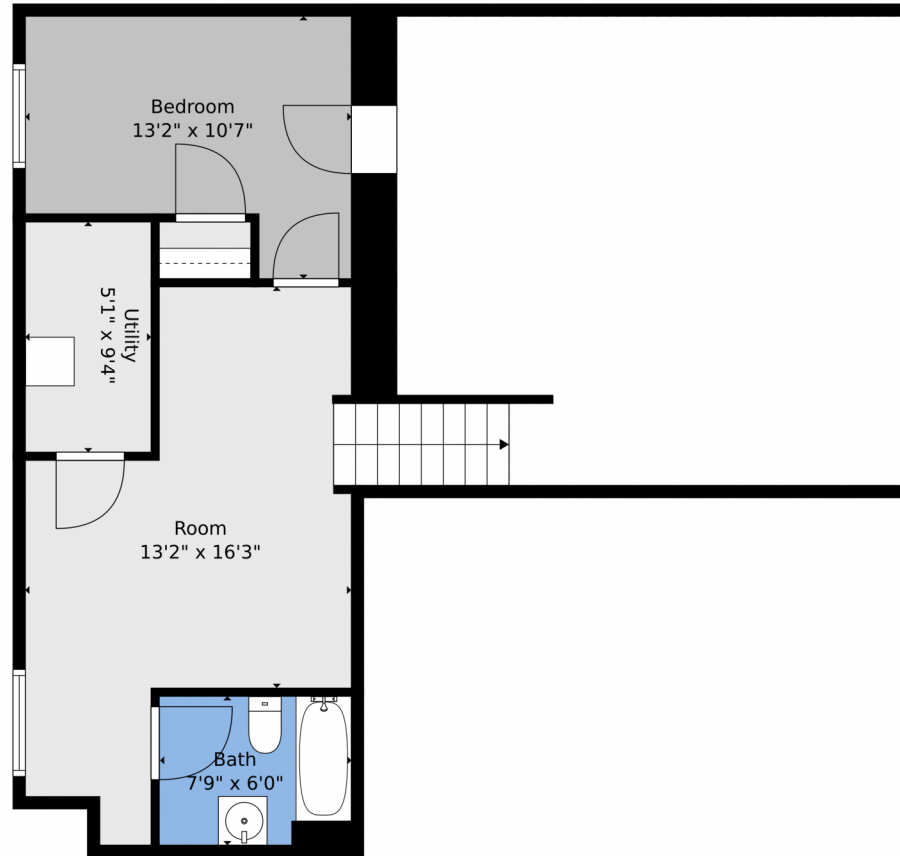
Christy Hepp
303-910-5393
cnishi1068@msn.com
<https://christysellscolorado.com>



Scan code
for more
property
details



10571 Garfield Street, Thornton, CO 80233 – Basement



TOTAL: 2120 sq. ft
BELOW GROUND: 441 sq. ft, FLOOR 2: 972 sq. ft, FLOOR 3: 707 sq. ft
EXCLUDED AREAS: UTILITY: 47 sq. ft, LOW CEILING: 373 sq. ft, PORCH: 95 sq. ft,
PATIO: 137 sq. ft, GARAGE: 391 sq. ft, FIREPLACE: 10 sq. ft,
WALLS: 223 sq. ft

Floor Plan Created By V1photos.com, Measurements Deamed Highly Reliable But Not Guaranteed.



Disclaimer: Sizes and Dimensions are Approximate, Actual May Vary.



Christy Hepp
303-910-5393
cnishi1068@msn.com
<https://christysellscolorado.com>



Scan code
for more
property
details





TOTAL: 2120 sq. ft
BELOW GROUND: 441 sq. ft, FLOOR 2: 972 sq. ft, FLOOR 3: 707 sq. ft
EXCLUDED AREAS: UTILITY: 47 sq. ft, LOW CEILING: 373 sq. ft, PORCH: 95 sq. ft,
PATIO: 137 sq. ft, GARAGE: 391 sq. ft, FIREPLACE: 10 sq. ft,
WALLS: 223 sq. ft

Floor Plan Created By V1photos.com, Measurements Deamed Highly Reliable But Not Guaranteed.



Disclaimer: Sizes and Dimensions are Approximate, Actual May Vary.



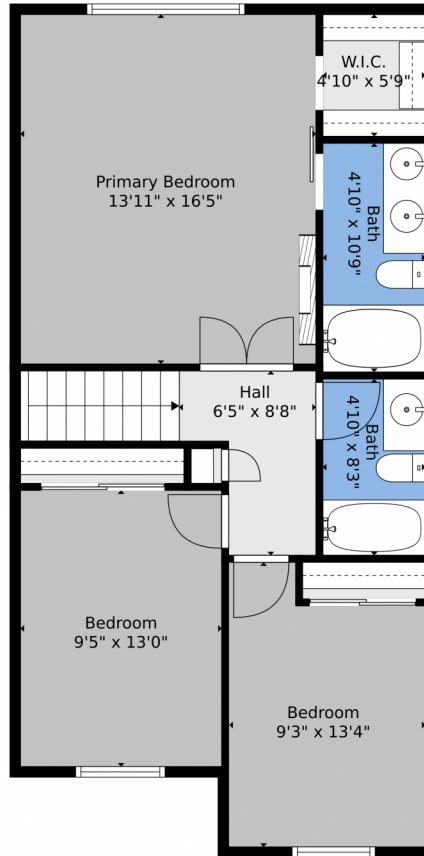
Christy Hepp
303-910-5393
cnishi1068@msn.com
<https://christysellscolorado.com>



Scan code
for more
property
details



10571 Garfield Street, Thornton, CO 80233 – 2nd Level



TOTAL: 2120 sq. ft
BELOW GROUND: 441 sq. ft, FLOOR 2: 972 sq. ft, FLOOR 3: 707 sq. ft
EXCLUDED AREAS: UTILITY: 47 sq. ft, LOW CEILING: 373 sq. ft, PORCH: 95 sq. ft,
PATIO: 137 sq. ft, GARAGE: 391 sq. ft, FIREPLACE: 10 sq. ft,
WALLS: 223 sq. ft

Floor Plan Created By V1photos.com, Measurements Deamed Highly Reliable But Not Guaranteed.



Disclaimer: Sizes and Dimensions are Approximate, Actual May Vary.



Christy Hepp
303-910-5393
cnishi1068@msn.com
<https://christysellscolorado.com>



Scan code
for more
property
details



10571 Garfield Street, Thornton, CO 80233 – All Levels



TOTAL: 2120 sq. ft
BELOW GROUND: 441 sq. ft, FLOOR 2: 972 sq. ft, FLOOR 3: 707 sq. ft
EXCLUDED AREAS: UTILITY: 47 sq. ft, LOW CEILING: 373 sq. ft, PORCH: 95 sq. ft,
PATIO: 137 sq. ft, GARAGE: 391 sq. ft, FIREPLACE: 10 sq. ft,
WALLS: 223 sq. ft

Floor Plan Created By V1photos.com, Measurements Deamed Highly Reliable But Not Guaranteed.



Disclaimer: Sizes and Dimensions are Approximate, Actual May Vary.



Christy Hepp
303-910-5393
cnishi1068@msn.com
<https://christysellscolorado.com>



Scan code
for more
property
details

