



Single Family



1215 SQFT



Victoria Merchant
303-328-8800
vmerchant@kw.com



Scan code
for more
property
details



194 Tincup Terrace, Bailey, CO 80421 — Main



TOTAL: 1322 sq. ft
FLOOR 1: 1322 sq. ft, FLOOR 2: 0 sq. ft, FLOOR 3: 0 sq. ft
EXCLUDED AREAS: PORCH: 31 sq. ft, DECK: 268 sq. ft, GARAGE: 821 sq. ft,
CARPORT: 383 sq. ft, SHED: 139 sq. ft
WALLS: 179 sq. ft

Floor Plan Created By V1photos.com, Measurements Deamed Highly Reliable But Not Guaranteed.



Disclaimer: Sizes and Dimensions are Approximate, Actual May Vary.

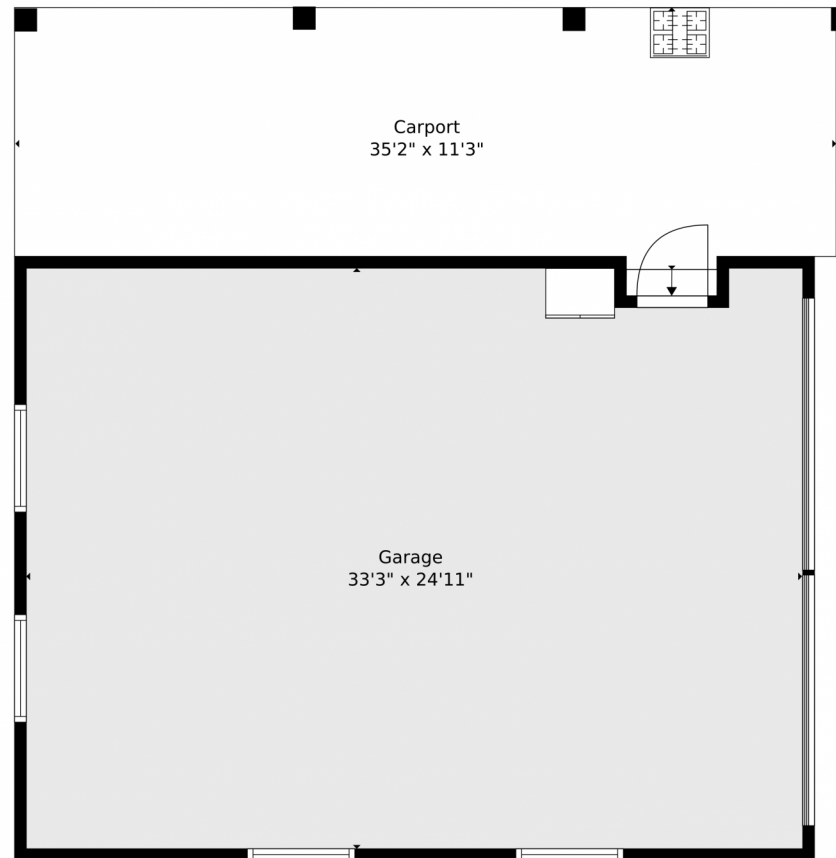


Victoria Merchant
303-328-8800
vmerchant@kw.com



Scan code
for more
property
details

194 Tincup Terrace, Bailey, CO 80421 — Detached Garage



TOTAL: 1322 sq. ft
FLOOR 1: 1322 sq. ft, FLOOR 2: 0 sq. ft, FLOOR 3: 0 sq. ft
EXCLUDED AREAS: PORCH: 31 sq. ft, DECK: 268 sq. ft, GARAGE: 821 sq. ft,
CARPORT: 383 sq. ft, SHED: 139 sq. ft
WALLS: 179 sq. ft

Floor Plan Created By V1photos.com, Measurements Deamed Highly Reliable But Not Guaranteed.



Disclaimer: Sizes and Dimensions are Approximate, Actual May Vary.

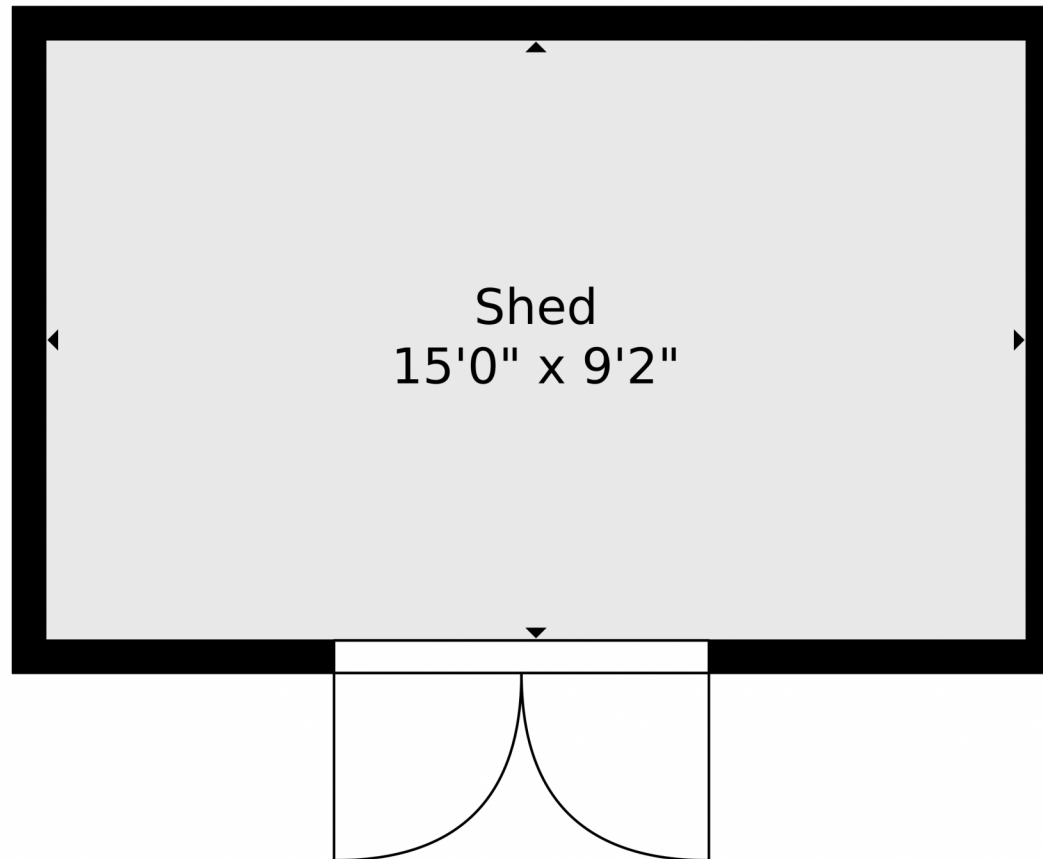


Victoria Merchant
303-328-8800
vmerchant@kw.com



Scan code
for more
property
details





TOTAL: 1322 sq. ft
FLOOR 1: 1322 sq. ft, FLOOR 2: 0 sq. ft, FLOOR 3: 0 sq. ft
EXCLUDED AREAS: PORCH: 31 sq. ft, DECK: 268 sq. ft, GARAGE: 821 sq. ft,
CARPORT: 383 sq. ft, SHED: 139 sq. ft
WALLS: 179 sq. ft

Floor Plan Created By V1photos.com, Measurements Deamed Highly Reliable But Not Guaranteed.



Disclaimer: Sizes and Dimensions are Approximate, Actual May Vary.



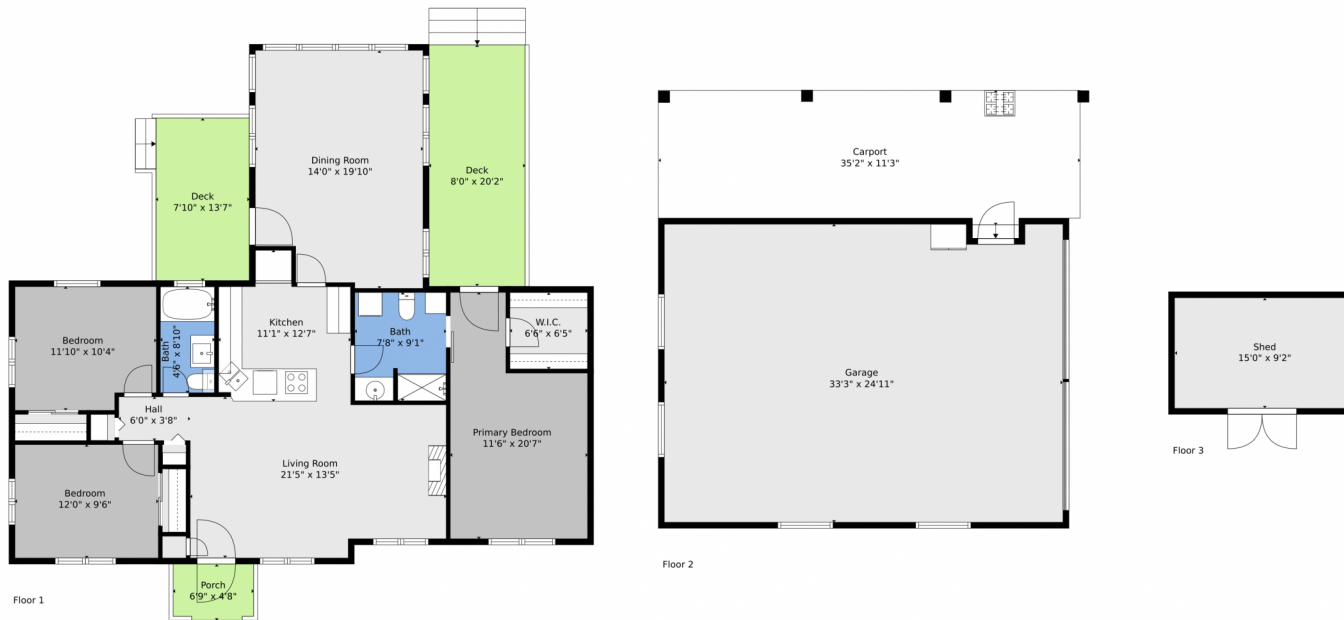
Victoria Merchant
303-328-8800
vmerchant@kw.com



Scan code
for more
property
details



194 Tincup Terrace, Bailey, CO 80421 — All Levels



TOTAL: 1322 sq. ft
FLOOR 1: 1322 sq. ft, FLOOR 2: 0 sq. ft, FLOOR 3: 0 sq. ft
EXCLUDED AREAS: PORCH: 31 sq. ft, DECK: 268 sq. ft, GARAGE: 821 sq. ft,
CARPORT: 383 sq. ft, SHED: 139 sq. ft
WALLS: 179 sq. ft

Floor Plan Created By V1photos.com, Measurements Deamed Highly Reliable But Not Guaranteed.



Disclaimer: Sizes and Dimensions are Approximate, Actual May Vary.



Victoria Merchant
303-328-8800
vmerchant@kw.com

