



11588 East Bayaud Drive
Aurora, CO 80012



Single Family



1433 SQFT



3 Beds



1/1 Baths



Taylor Haas

303-665-7368

taylorh@coloradorm.com

<https://www.coloradorm.com/available-rental-properties-denver>



Scan code
for more
property
details



11588 East Bayaud Drive, Aurora, CO 80012 — Main



TOTAL: 1321 sq. ft
BELOW GROUND: 0 sq. ft, FLOOR 2: 635 sq. ft, FLOOR 3: 686 sq. ft
EXCLUDED AREAS: UTILITY: 82 sq. ft, GARAGE: 547 sq. ft, BALCONY: 105 sq. ft,
WALLS: 151 sq. ft

Floor Plan Created By V1photos.com, Measurements Deamed Highly Reliable But Not Guaranteed.



Disclaimer: Sizes and Dimensions are Approximate, Actual May Vary.



Taylor Haas

303-665-7368

taylorh@coloradorpm.com

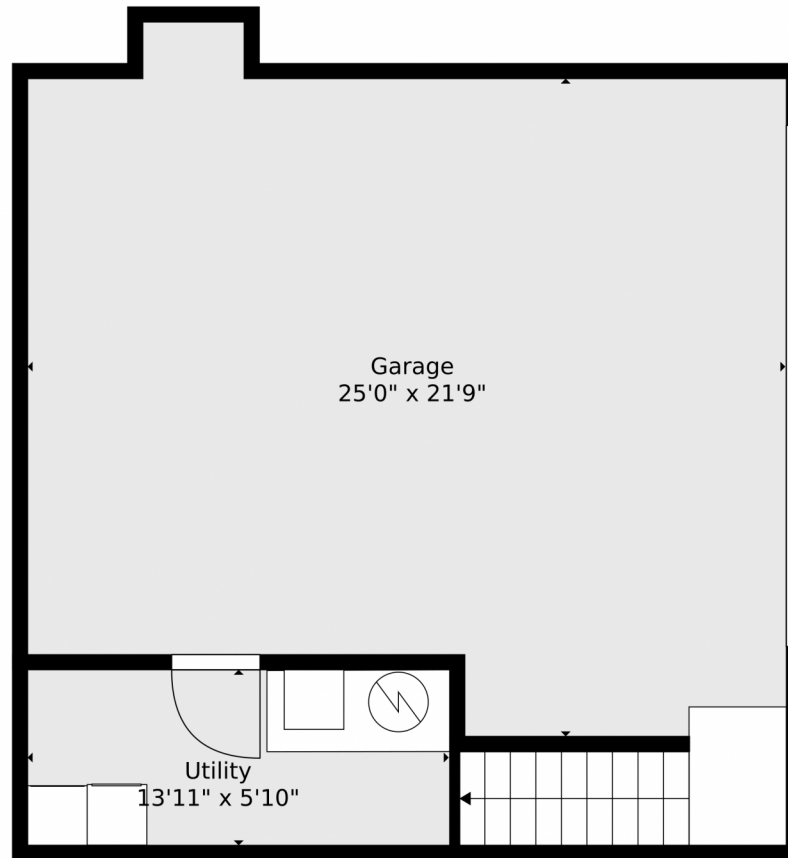
<https://www.coloradorpm.com/available-rental-properties-denver>



Scan code
for more
property
details



11588 East Bayaud Drive, Aurora, CO 80012 — Lower Level



TOTAL: 1321 sq. ft
BELOW GROUND: 0 sq. ft, FLOOR 2: 635 sq. ft, FLOOR 3: 686 sq. ft
EXCLUDED AREAS: UTILITY: 82 sq. ft, GARAGE: 547 sq. ft, BALCONY: 105 sq. ft,
WALLS: 151 sq. ft

Floor Plan Created By V1photos.com, Measurements Deamed Highly Reliable But Not Guaranteed.



Disclaimer: Sizes and Dimensions are Approximate, Actual May Vary.



Taylor Haas

303-665-7368

taylorh@coloradorpm.com

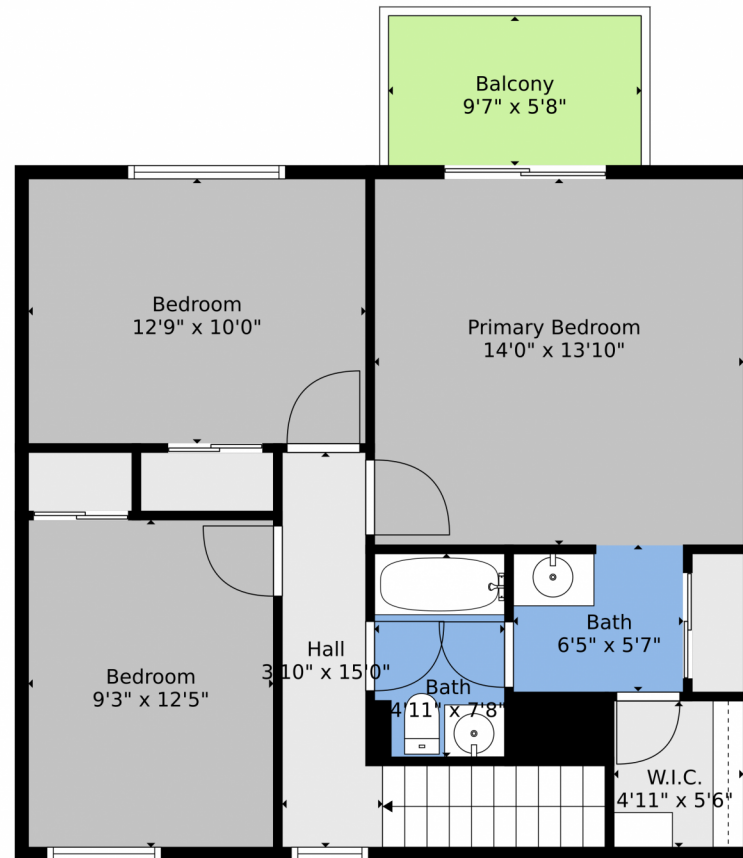
<https://www.coloradorpm.com/available-rental-properties-denver>



Scan code
for more
property
details



11588 East Bayaud Drive, Aurora, CO 80012 — 2nd Level



TOTAL: 1321 sq. ft
BELOW GROUND: 0 sq. ft, FLOOR 2: 635 sq. ft, FLOOR 3: 686 sq. ft
EXCLUDED AREAS: UTILITY: 82 sq. ft, GARAGE: 547 sq. ft, BALCONY: 105 sq. ft,
WALLS: 151 sq. ft

Floor Plan Created By V1photos.com, Measurements Deamed Highly Reliable But Not Guaranteed.



Disclaimer: Sizes and Dimensions are Approximate, Actual May Vary.



Taylor Haas

303-665-7368

taylorh@coloradorpm.com

<https://www.coloradorpm.com/available-rental-properties-denver>



Scan code
for more
property
details



11588 East Bayaud Drive, Aurora, CO 80012 — All Levels



TOTAL: 1321 sq. ft
BELOW GROUND: 0 sq. ft, FLOOR 2: 635 sq. ft, FLOOR 3: 686 sq. ft
EXCLUDED AREAS: UTILITY: 82 sq. ft, GARAGE: 547 sq. ft, BALCONY: 105 sq. ft,
WALLS: 151 sq. ft

Floor Plan Created By V1photos.com, Measurements Deamed Highly Reliable But Not Guaranteed.



Disclaimer: Sizes and Dimensions are Approximate, Actual May Vary.



Taylor Haas
303-665-7368
taylorh@coloradorpm.com
<https://www.coloradorpm.com/available-rental-properties-denver>



Scan code
for more
property
details

