



13112 Summit Grove Parkway
Thornton, CO 80241
COMMUNITY: Woodbridge Station

MLS # 2110427
PRICE \$574,000

Well Maintained Ranch Home - Single floor living with room to grow.



Single Family



2488 SQFT



3 Beds



2 Baths



3 Car



0.21 Acre

PROPERTY DETAILS

Welcome to this well-maintained ranch home in Woodbridge Station, Thornton. With 1,664 sq ft of finished living space on the main level and an unfinished basement, this residence offers great potential. The open concept design features a bright family room, kitchen, and dining area, ideal for entertaining. The upgraded kitchen boasts granite countertops, a gas range, and hardwood floors. The main level includes a spacious primary suite with a 5-piece bath and walk-in closet. A flexible third bedroom can serve as an office. The peaceful backyard features mature trees and a storage shed. Enjoy the newly refinished decks and a three-car garage with built-in storage. Located on a quiet cul-de-sac near parks and shopping. More photos will be available on June 5th, with showings starting June 6th.



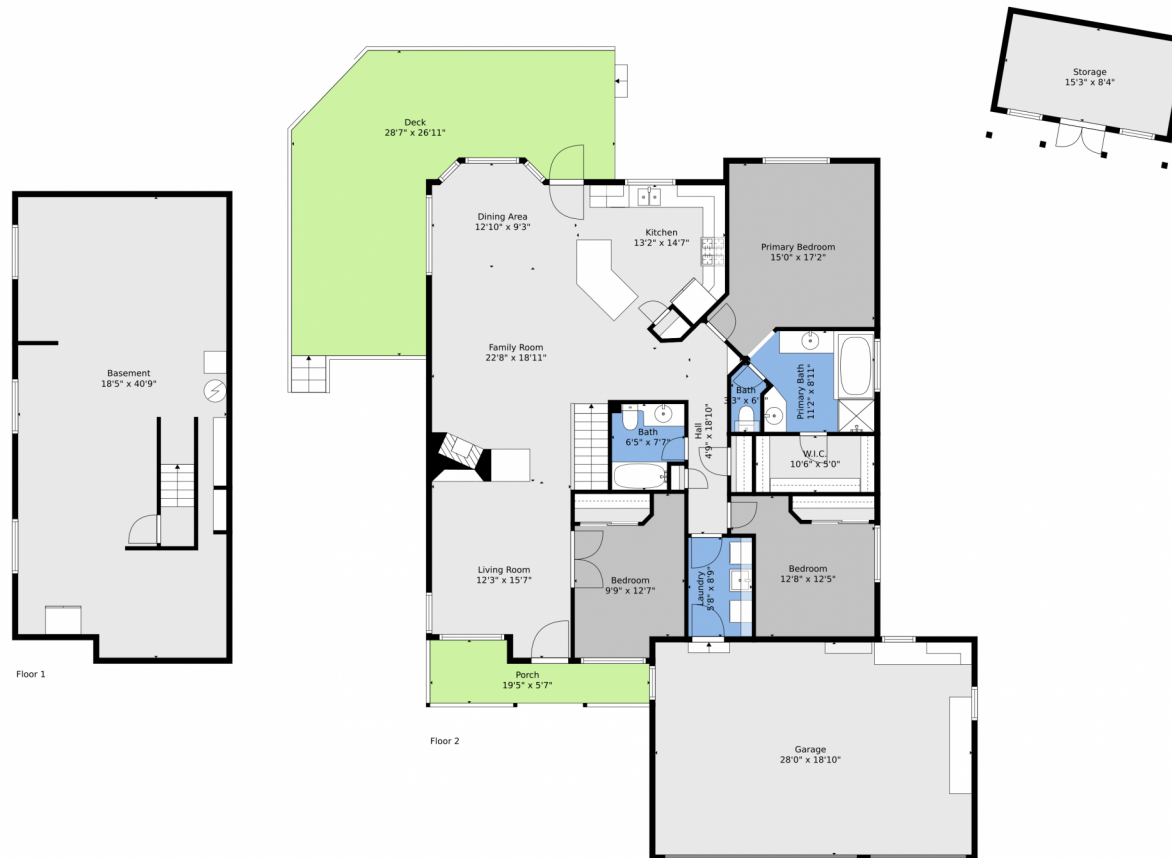
Ben Drotar
720-628-0084
ben@bendrotar.com
<https://bendrotar.com>



Scan code
for more
property
details



13112 Summit Grove Parkway, Thornton, CO 80241 — All Levels



TOTAL: 1623 sq. ft
BELOW GROUND: 0 sq. ft, FLOOR 2: 1623 sq. ft
EXCLUDED AREAS: BASEMENT: 737 sq. ft, GARAGE: 526 sq. ft, STORAGE: 128 sq. ft,
DECK: 483 sq. ft, PORCH: 82 sq. ft
WALLS: 204 sq. ft

Floor Plan Created By V1photos.com, Measurements Deamed Highly Reliable But Not Guaranteed.



Disclaimer: Sizes and Dimensions are Approximate, Actual May Vary.



Ben Drotar
720-628-0084
ben@bendrotar.com
<https://bendrotar.com>



Scan code
for more
property
details

