



RE/MAX
EDGE

5096 Crystal Park Road
Manitou Springs, CO 80829



Single Family



3240 SQFT



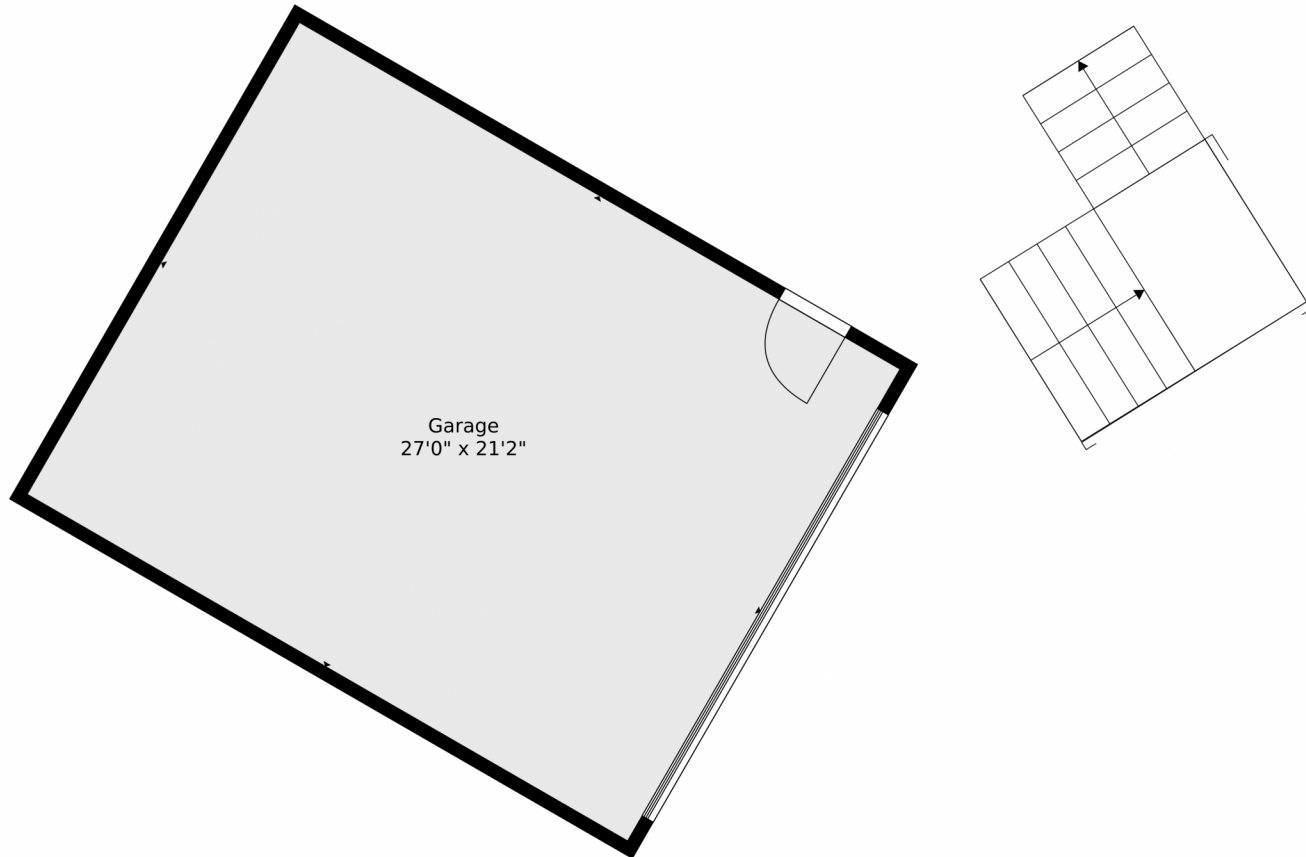
Dave Everett
720-209-8964
davee@roxedgeproperties.com



Scan code
for more
property
details



5096 Crystal Park Road, Manitou Springs, CO 80829 — Detached Garage



TOTAL: 2958 sq. ft
BELOW GROUND: 0 sq. ft, FLOOR 2: 1034 sq. ft, FLOOR 3: 1094 sq. ft, FLOOR 4: 830 sq. ft
EXCLUDED AREAS: GARAGE: 572 sq. ft, ROOM: 41 sq. ft, DECK: 564 sq. ft,
PORCH: 430 sq. ft, BALCONY: 19 sq. ft, OPEN TO BELOW: 265 sq. ft
WALLS: 254 sq. ft

Floor Plan Created By V1photos.com, Measurements Deamed Highly Reliable But Not Guaranteed.



Disclaimer: Sizes and Dimensions are Approximate, Actual May Vary.



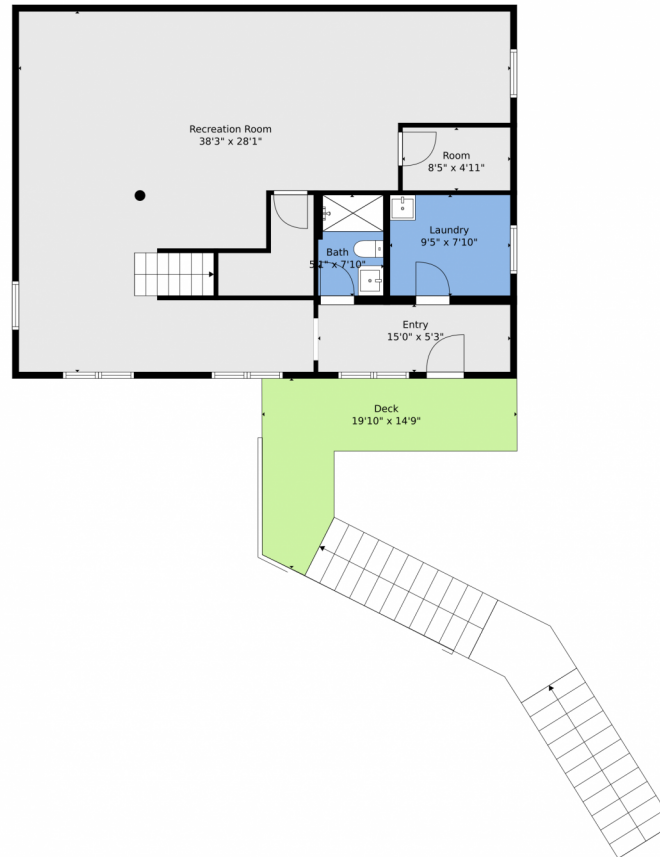
Dave Everett
720-209-8964
davee@roxedgeproperties.com



Scan code
for more
property
details



5096 Crystal Park Road, Manitou Springs, CO 80829 — Lower Level



TOTAL: 2958 sq. ft
BELOW GROUND: 0 sq. ft, FLOOR 2: 1034 sq. ft, FLOOR 3: 1094 sq. ft, FLOOR 4: 830 sq. ft
EXCLUDED AREAS: GARAGE: 572 sq. ft, ROOM: 41 sq. ft, DECK: 564 sq. ft,
PORCH: 430 sq. ft, BALCONY: 19 sq. ft, OPEN TO BELOW: 265 sq. ft
WALLS: 254 sq. ft

Floor Plan Created By V1photos.com, Measurements Deamed Highly Reliable But Not Guaranteed.



Disclaimer: Sizes and Dimensions are Approximate, Actual May Vary.



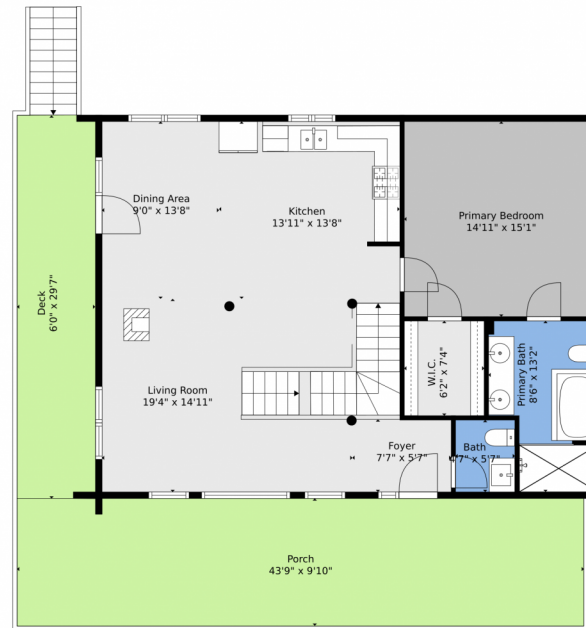
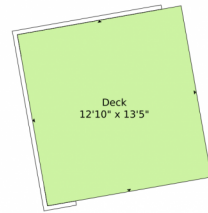
Dave Everett
720-209-8964
davee@roxedgeproperties.com



Scan code
for more
property
details



5096 Crystal Park Road, Manitou Springs, CO 80829 — Main



TOTAL: 2958 sq. ft
BELOW GROUND: 0 sq. ft, FLOOR 2: 1034 sq. ft, FLOOR 3: 1094 sq. ft, FLOOR 4: 830 sq. ft
EXCLUDED AREAS: GARAGE: 572 sq. ft, ROOM: 41 sq. ft, DECK: 564 sq. ft,
PORCH: 430 sq. ft, BALCONY: 19 sq. ft, OPEN TO BELOW: 265 sq. ft
WALLS: 254 sq. ft

Floor Plan Created By V1photos.com, Measurements Deamed Highly Reliable But Not Guaranteed.



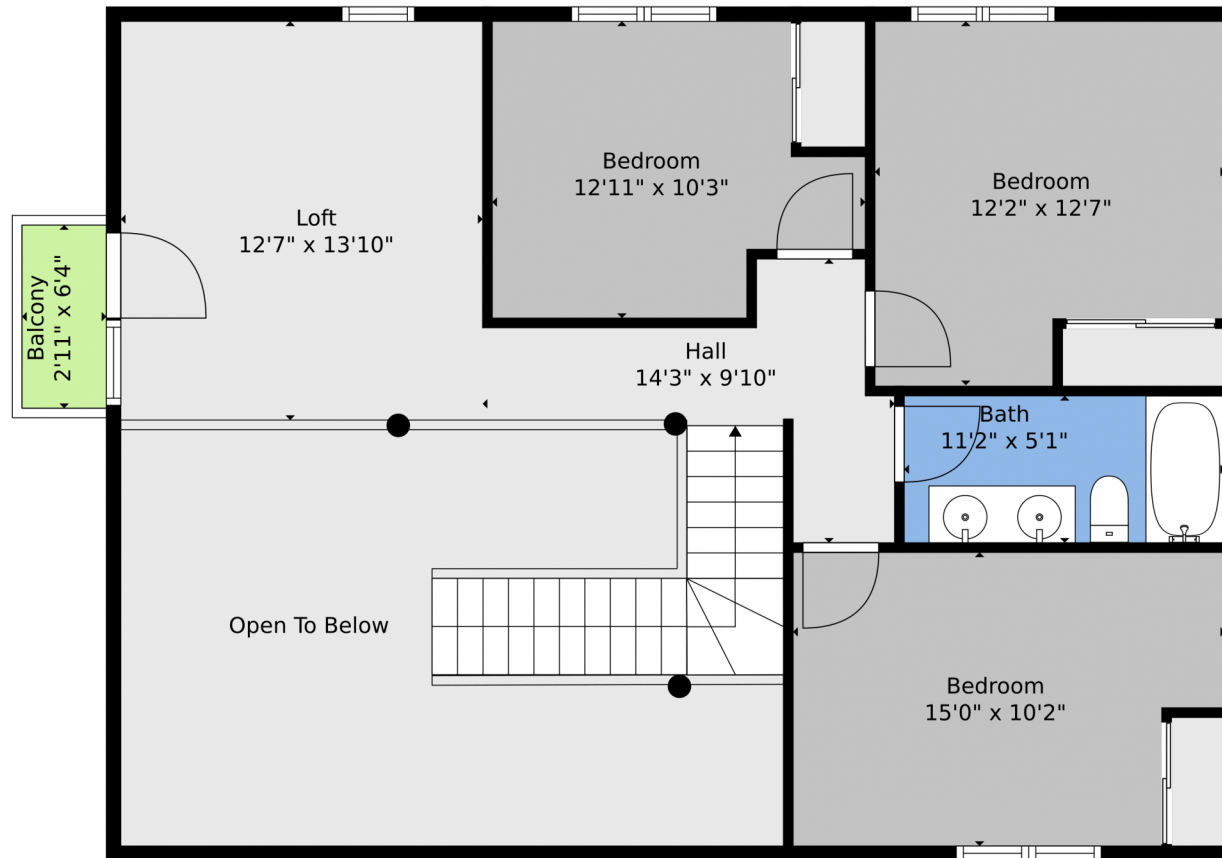
Disclaimer: Sizes and Dimensions are Approximate, Actual May Vary.



Dave Everett
720-209-8964
davee@roxedgeproperties.com



5096 Crystal Park Road, Manitou Springs, CO 80829 — 2nd Level



TOTAL: 2958 sq. ft
BELOW GROUND: 0 sq. ft, FLOOR 2: 1034 sq. ft, FLOOR 3: 1094 sq. ft, FLOOR 4: 830 sq. ft
EXCLUDED AREAS: GARAGE: 572 sq. ft, ROOM: 41 sq. ft, DECK: 564 sq. ft,
PORCH: 430 sq. ft, BALCONY: 19 sq. ft, OPEN TO BELOW: 265 sq. ft
WALLS: 254 sq. ft

Floor Plan Created By V1photos.com, Measurements Deamed Highly Reliable But Not Guaranteed.



Disclaimer: Sizes and Dimensions are Approximate, Actual May Vary.



Dave Everett
720-209-8964
davee@roxedgeproperties.com



5096 Crystal Park Road, Manitou Springs, CO 80829 — All Levels



TOTAL: 2958 sq. ft
BELOW GROUND: 0 sq. ft, FLOOR 2: 1034 sq. ft, FLOOR 3: 1094 sq. ft, FLOOR 4: 830 sq. ft
EXCLUDED AREAS: GARAGE: 572 sq. ft, ROOM: 41 sq. ft, DECK: 564 sq. ft,
PORCH: 430 sq. ft, BALCONY: 19 sq. ft, OPEN TO BELOW: 265 sq. ft
WALLS: 254 sq. ft

Floor Plan Created By V1photos.com, Measurements Deamed Highly Reliable But Not Guaranteed.



Disclaimer: Sizes and Dimensions are Approximate, Actual May Vary.



Dave Everett
720-209-8964
davee@roxedgeproperties.com



Scan code
for more
property
details

