



Single Family



4617 SQFT



4 Beds



3/1 Baths



3 Car



35 Acre



Jodi Dolph

303-902-9968

jodi.dolph@kw.com

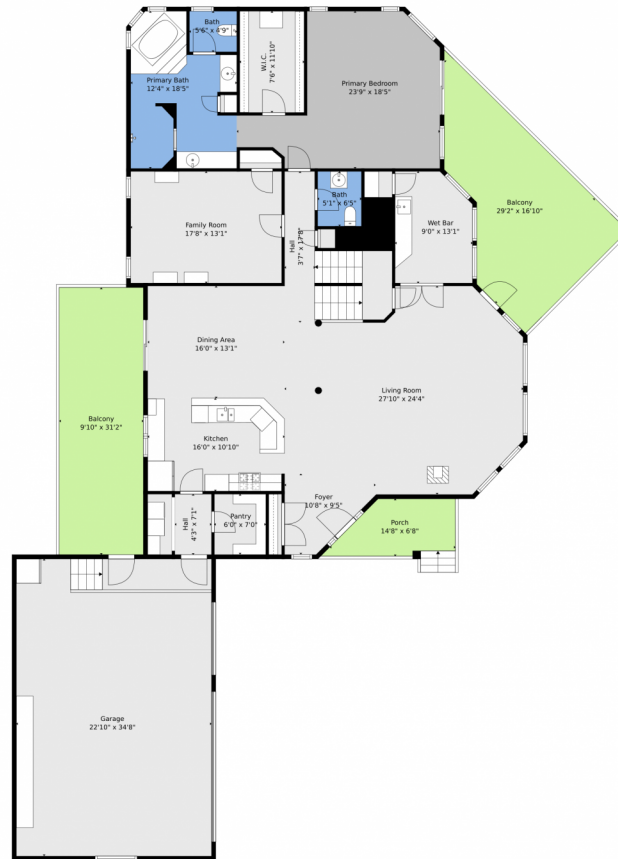
<https://www.TheDolphTeam.com>



Scan code
for more
property
details



13954 Pine Country Lane, Conifer, CO 80433 — Main



TOTAL: 4353 sq. ft
BELOW GROUND: 928 sq. ft, FLOOR 2: 2386 sq. ft, FLOOR 3: 1039 sq. ft
EXCLUDED AREAS: STORAGE: 45 sq. ft, UTILITY: 67 sq. ft, LOW CEILING: 1160 sq. ft,
GARAGE: 791 sq. ft, BALCONY: 729 sq. ft, PORCH: 81 sq. ft,
OPEN TO BELOW: 1155 sq. ft
WALLS: 363 sq. ft

Floor Plan Created By V1photos.com, Measurements Deamed Highly Reliable But Not Guaranteed.



Disclaimer: Sizes and Dimensions are Approximate, Actual May Vary.



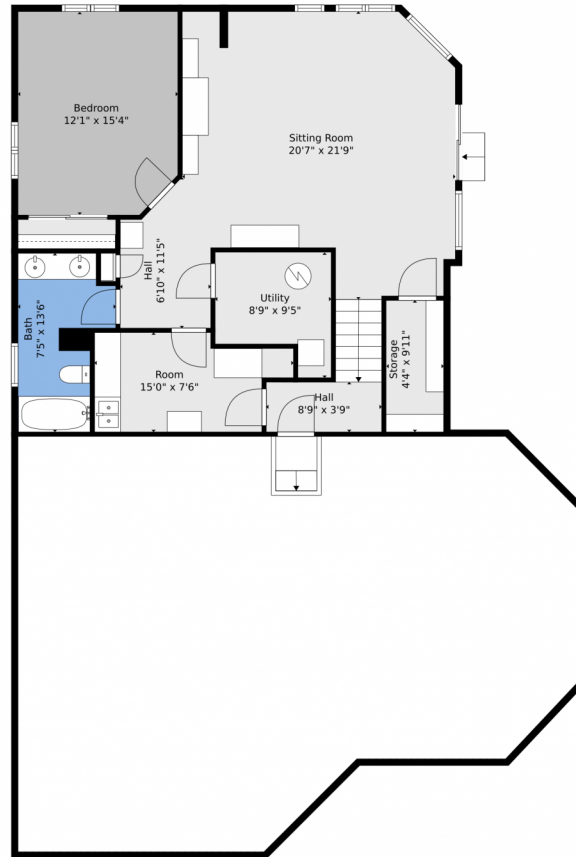
Jodi Dolph
303-902-9968
jodi.dolph@kw.com
<https://www.TheDolphTeam.com>



Scan code
for more
property
details



13954 Pine Country Lane, Conifer, CO 80433 — Basement



TOTAL: 4353 sq. ft
BELOW GROUND: 928 sq. ft, FLOOR 2: 2386 sq. ft, FLOOR 3: 1039 sq. ft
EXCLUDED AREAS: STORAGE: 45 sq. ft, UTILITY: 67 sq. ft, LOW CEILING: 1160 sq. ft,
GARAGE: 791 sq. ft, BALCONY: 729 sq. ft, PORCH: 81 sq. ft,
OPEN TO BELOW: 1155 sq. ft
WALLS: 363 sq. ft

Floor Plan Created By V1photos.com, Measurements Deamed Highly Reliable But Not Guaranteed.



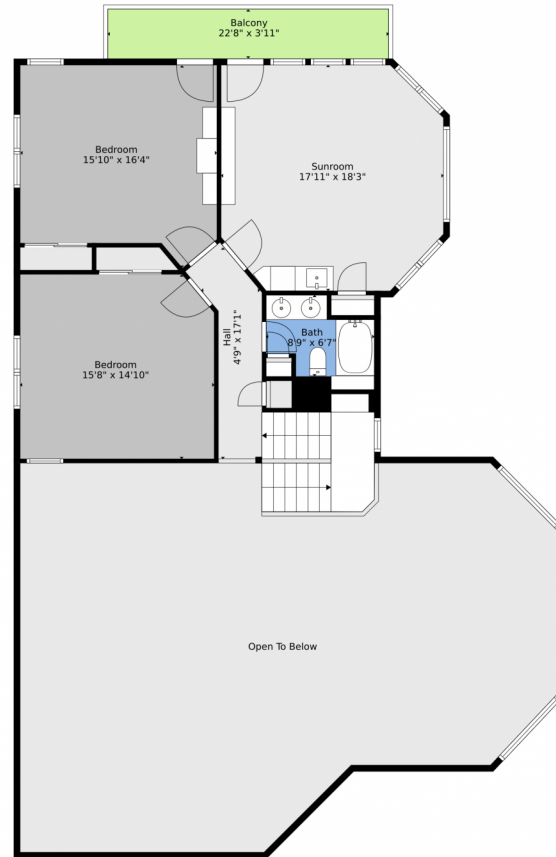
Disclaimer: Sizes and Dimensions are Approximate, Actual May Vary.



Jodi Dolph
303-902-9968
jodi.dolph@kw.com
<https://www.TheDolphTeam.com>



13954 Pine Country Lane, Conifer, CO 80433 – 2nd Level



TOTAL: 4353 sq. ft
BELOW GROUND: 928 sq. ft, FLOOR 2: 2386 sq. ft, FLOOR 3: 1039 sq. ft
EXCLUDED AREAS: STORAGE: 45 sq. ft, UTILITY: 67 sq. ft, LOW CEILING: 1160 sq. ft,
GARAGE: 791 sq. ft, BALCONY: 729 sq. ft, PORCH: 81 sq. ft,
OPEN TO BELOW: 1155 sq. ft
WALLS: 363 sq. ft

Floor Plan Created By V1photos.com, Measurements Deamed Highly Reliable But Not Guaranteed.



Disclaimer: Sizes and Dimensions are Approximate, Actual May Vary.



Jodi Dolph
303-902-9968
jodi.dolph@kw.com
<https://www.TheDolphTeam.com>



Scan code
for more
property
details



13954 Pine Country Lane, Conifer, CO 80433 — All Levels



TOTAL: 4353 sq. ft
 BELOW GROUND: 928 sq. ft, FLOOR 2: 2386 sq. ft, FLOOR 3: 1039 sq. ft
 EXCLUDED AREAS: STORAGE: 45 sq. ft, UTILITY: 67 sq. ft, LOW CEILING: 1160 sq. ft,
 GARAGE: 791 sq. ft, BALCONY: 729 sq. ft, PORCH: 81 sq. ft,
 OPEN TO BELOW: 1155 sq. ft
 WALLS: 363 sq. ft

Floor Plan Created By V1photos.com, Measurements Deamed Highly Reliable But Not Guaranteed.



Disclaimer: Sizes and Dimensions are Approximate, Actual May Vary.



Jodi Dolph
 303-902-9968
 jodi.dolph@kw.com
<https://www.TheDolphTeam.com>



Scan code
 for more
 property
 details

