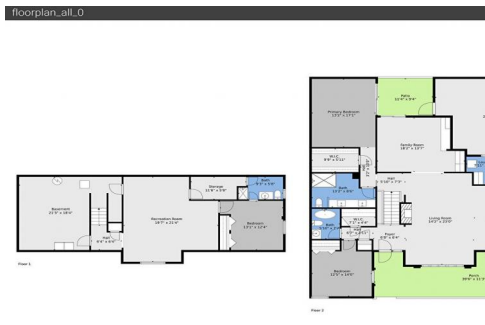
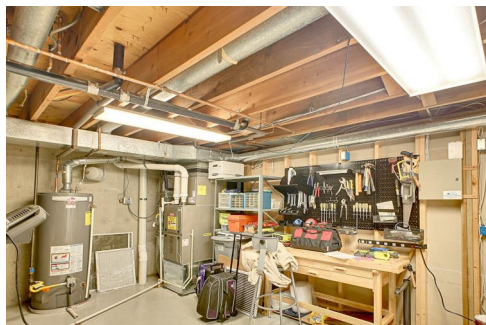




3481 South Race Street
Englewood, CO 80113
COMMUNITY: Kent Village



Townhouse



3800 SQFT



3 Beds



3 Baths



2 Car



Carl Dire
720-260-9979
diresellsdenver@yahoo.com



Scan code
for more
property
details



3481 South Race Street, Englewood, CO 80113 — Main



TOTAL: 2515 sq. ft
BELOW GROUND: 650 sq. ft, FLOOR 2: 1865 sq. ft
EXCLUDED AREAS: STORAGE: 59 sq. ft, BASEMENT: 329 sq. ft, GARAGE: 396 sq. ft,
PATIO: 106 sq. ft, PORCH: 389 sq. ft
WALLS: 217 sq. ft

Floor Plan Created By V1photos.com, Measurements Deamed Highly Reliable But Not Guaranteed.



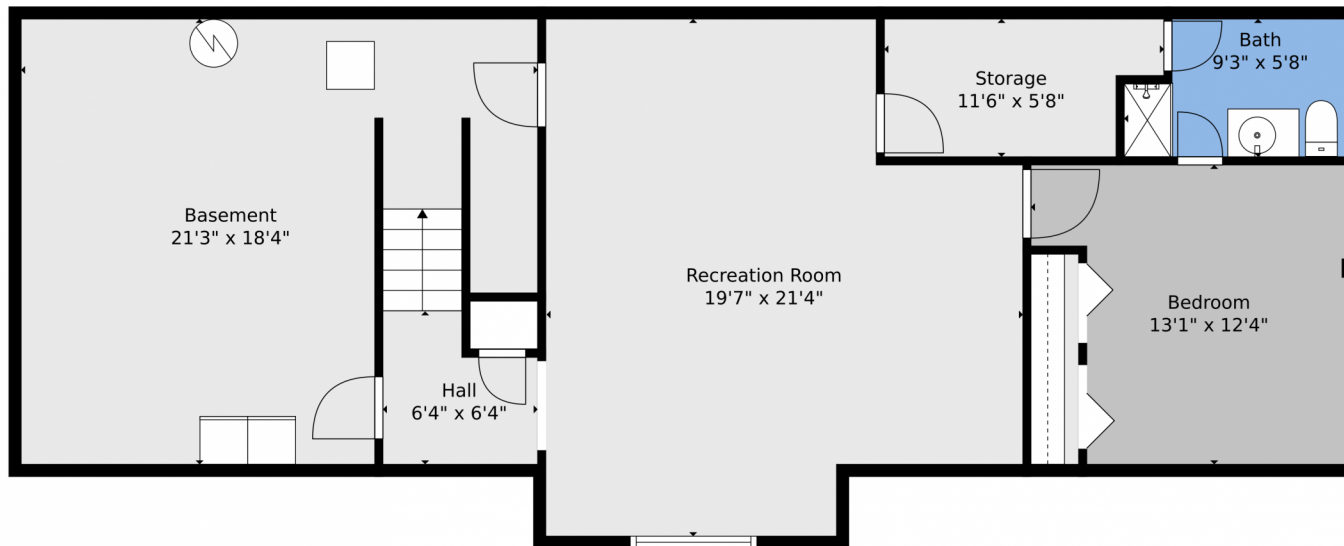
Disclaimer: Sizes and Dimensions are Approximate, Actual May Vary.



Carl Dire
720-260-9979
diresellsdenver@yahoo.com



3481 South Race Street, Englewood, CO 80113 — Basement



TOTAL: 2515 sq. ft
BELOW GROUND: 650 sq. ft, FLOOR 2: 1865 sq. ft
EXCLUDED AREAS: STORAGE: 59 sq. ft, BASEMENT: 329 sq. ft, GARAGE: 396 sq. ft,
PATIO: 106 sq. ft, PORCH: 389 sq. ft
WALLS: 217 sq. ft

Floor Plan Created By V1photos.com, Measurements Deamed Highly Reliable But Not Guaranteed.



Disclaimer: Sizes and Dimensions are Approximate, Actual May Vary.



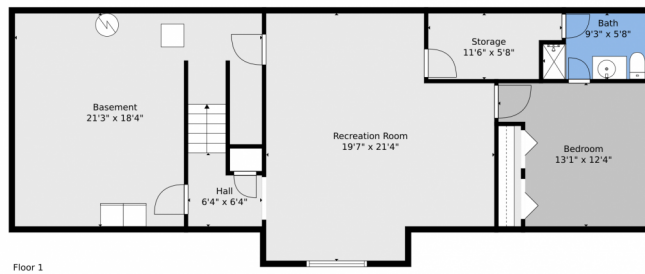
Carl Dire
720-260-9979
diresellsdenver@yahoo.com



Scan code
for more
property
details



3481 South Race Street, Englewood, CO 80113 – All Levels



TOTAL: 2515 sq. ft
BELOW GROUND: 650 sq. ft, FLOOR 2: 1865 sq. ft
EXCLUDED AREAS: STORAGE: 59 sq. ft, BASEMENT: 329 sq. ft, GARAGE: 396 sq. ft,
PATIO: 106 sq. ft, PORCH: 389 sq. ft
WALLS: 217 sq. ft

Floor Plan Created By V1photos.com, Measurements Deamed Highly Reliable But Not Guaranteed.



Disclaimer: Sizes and Dimensions are Approximate, Actual May Vary.



Carl Dire
720-260-9979
diresellsdenver@yahoo.com

