




 Single Family

 3500 SQFT

 5 Beds

 3/1 Baths

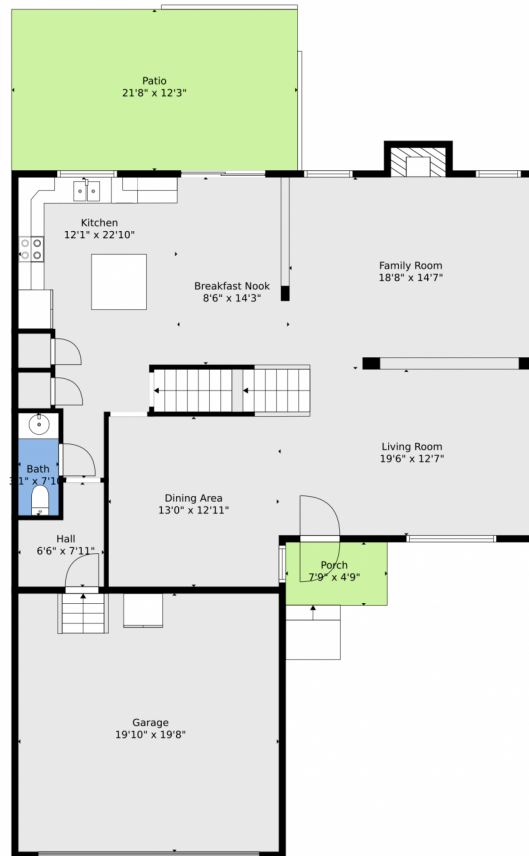
 2 Car



**Daniel Mackin**  
720-466-3378  
dan@mreiagents.com



## 215 McAfee Circle, Erie, CO 80516 — Main



**TOTAL: 3343 sq. ft**  
BELOW GROUND: 1037 sq. ft, FLOOR 2: 1150 sq. ft, FLOOR 3: 1156 sq. ft  
EXCLUDED AREAS: GARAGE: 389 sq. ft, PORCH: 37 sq. ft, PATIO: 266 sq. ft,  
FIREPLACE: 12 sq. ft  
WALLS: 246 sq. ft

Floor Plan Created By V1photos.com, Measurements Deamed Highly Reliable But Not Guaranteed.



Disclaimer: Sizes and Dimensions are Approximate, Actual May Vary.



**Daniel Mackin**  
720-466-3378  
dan@mreiagents.com



## 215 McAfee Circle, Erie, CO 80516 — 2nd Level



**TOTAL: 3343 sq. ft**  
BELOW GROUND: 1037 sq. ft, FLOOR 2: 1150 sq. ft, FLOOR 3: 1156 sq. ft  
EXCLUDED AREAS: GARAGE: 389 sq. ft, PORCH: 37 sq. ft, PATIO: 266 sq. ft,  
FIREPLACE: 12 sq. ft  
WALLS: 246 sq. ft

Floor Plan Created By V1photos.com, Measurements Deamed Highly Reliable But Not Guaranteed.



Disclaimer: Sizes and Dimensions are Approximate, Actual May Vary.

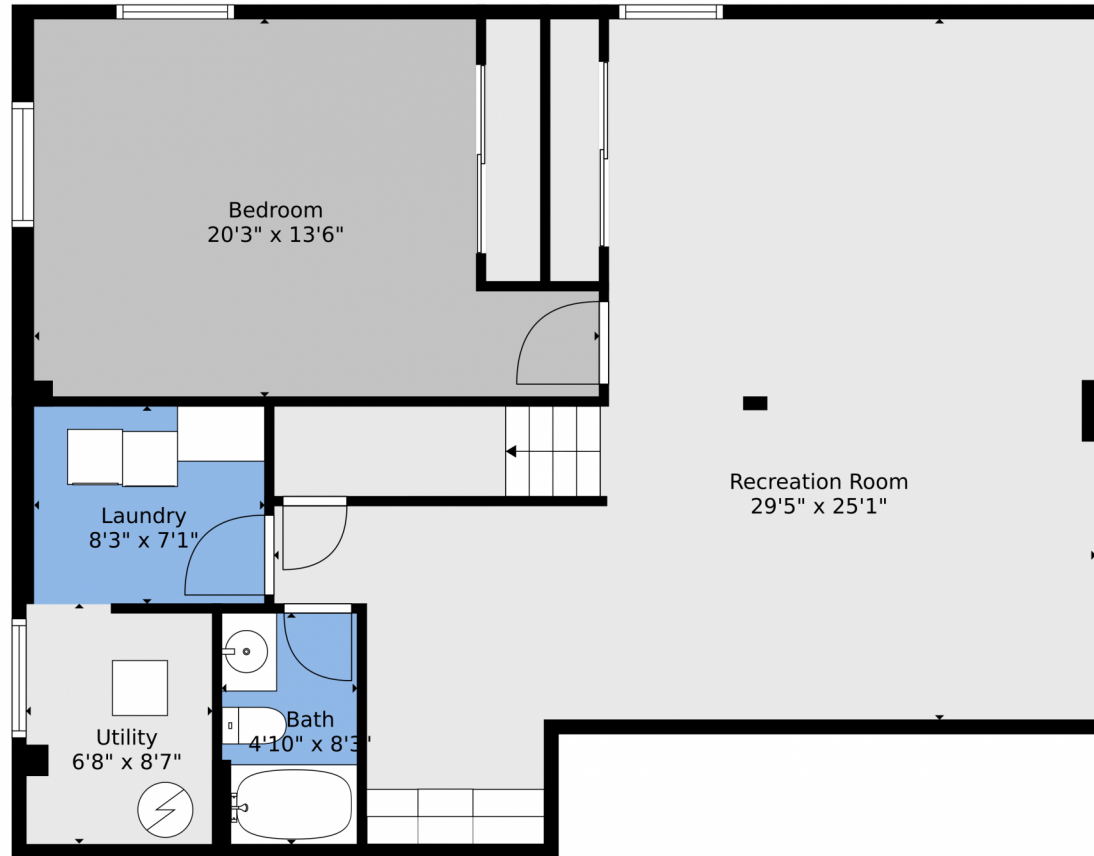


**Daniel Mackin**  
720-466-3378  
dan@mreiagents.com





## 215 McAfee Circle, Erie, CO 80516 — Lower Level



**TOTAL: 3343 sq. ft**  
BELOW GROUND: 1037 sq. ft, FLOOR 2: 1150 sq. ft, FLOOR 3: 1156 sq. ft  
EXCLUDED AREAS: GARAGE: 389 sq. ft, PORCH: 37 sq. ft, PATIO: 266 sq. ft,  
FIREPLACE: 12 sq. ft  
WALLS: 246 sq. ft

Floor Plan Created By V1photos.com, Measurements Deamed Highly Reliable But Not Guaranteed.



Disclaimer: Sizes and Dimensions are Approximate, Actual May Vary.



**Daniel Mackin**  
720-466-3378  
dan@mreiagents.com



# 215 McAfee Circle, Erie, CO 80516 — All Levels



**TOTAL: 3343 sq. ft**  
BELOW GROUND: 1037 sq. ft, FLOOR 2: 1150 sq. ft, FLOOR 3: 1156 sq. ft  
EXCLUDED AREAS: GARAGE: 389 sq. ft, PORCH: 37 sq. ft, PATIO: 266 sq. ft,  
FIREPLACE: 12 sq. ft  
WALLS: 246 sq. ft

Floor Plan Created By V1photos.com, Measurements Deamed Highly Reliable But Not Guaranteed.



Disclaimer: Sizes and Dimensions are Approximate, Actual May Vary.



**Daniel Mackin**  
720-466-3378  
dan@mreiagents.com

