



623 Mead Court
Louisville, CO 80027

MLS # 1036739
PRICE \$1,049,900

Prime Downtown Louisville Location !



Single Family



2288 SQFT



4 Beds



3 Baths



2 Car



0.15 Acre

PROPERTY DETAILS

Ideal location in Louisville near downtown amenities like schools, restaurants, and parks. This energy efficient ranch home features PV solar, a Trombe wall, and triple-pane Pella windows. Located in a quiet cul-de-sac next to a small park. Amenities include solid oak flooring, vaulted ceilings, gas heat stoves in the living and family rooms. Updated kitchen has soft close cabinetry, granite countertops and stainless steel appliances. Additional features include an oversized 2-car garage, air lock entry, upgraded 200 amp electrical panel and a lovely yard with a 20 x 14 deck, raised bed garden and picturesque waterfall feature.



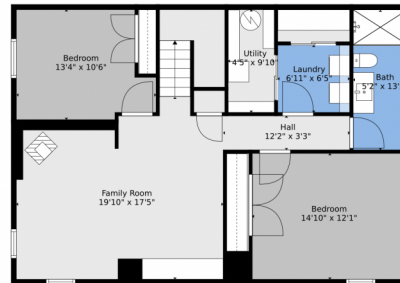
Pete Abel
303-594-8319
peteabelsold4u@boulderco.com
<https://www.peteabel.com>



Scan code
for more
property
details



623 Mead Court, Louisville, CO 80027 — All Levels



TOTAL: 2014 sq. ft
BELOW GROUND: 967 sq. ft, FLOOR 2: 1047 sq. ft
EXCLUDED AREAS: GARAGE: 516 sq. ft, PORCH: 47 sq. ft, COVERED DECK: 257 sq. ft,
BAY WINDOW: 17 sq. ft
WALLS: 175 sq. ft

Floor Plan Created By V1photos.com, Measurements Deamed Highly Reliable But Not Guaranteed.



Disclaimer: Sizes and Dimensions are Approximate, Actual May Vary.



Pete Abel
303-594-8319
peteabelsold4u@boulderco.com
<https://www.peteabel.com>



Scan code
for more
property
details

