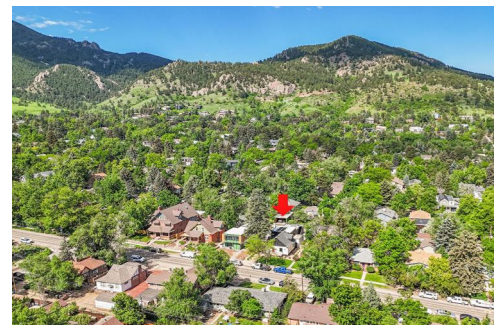




1029 9th Street
Boulder, CO 80302

MLS # 7182119



Single Family

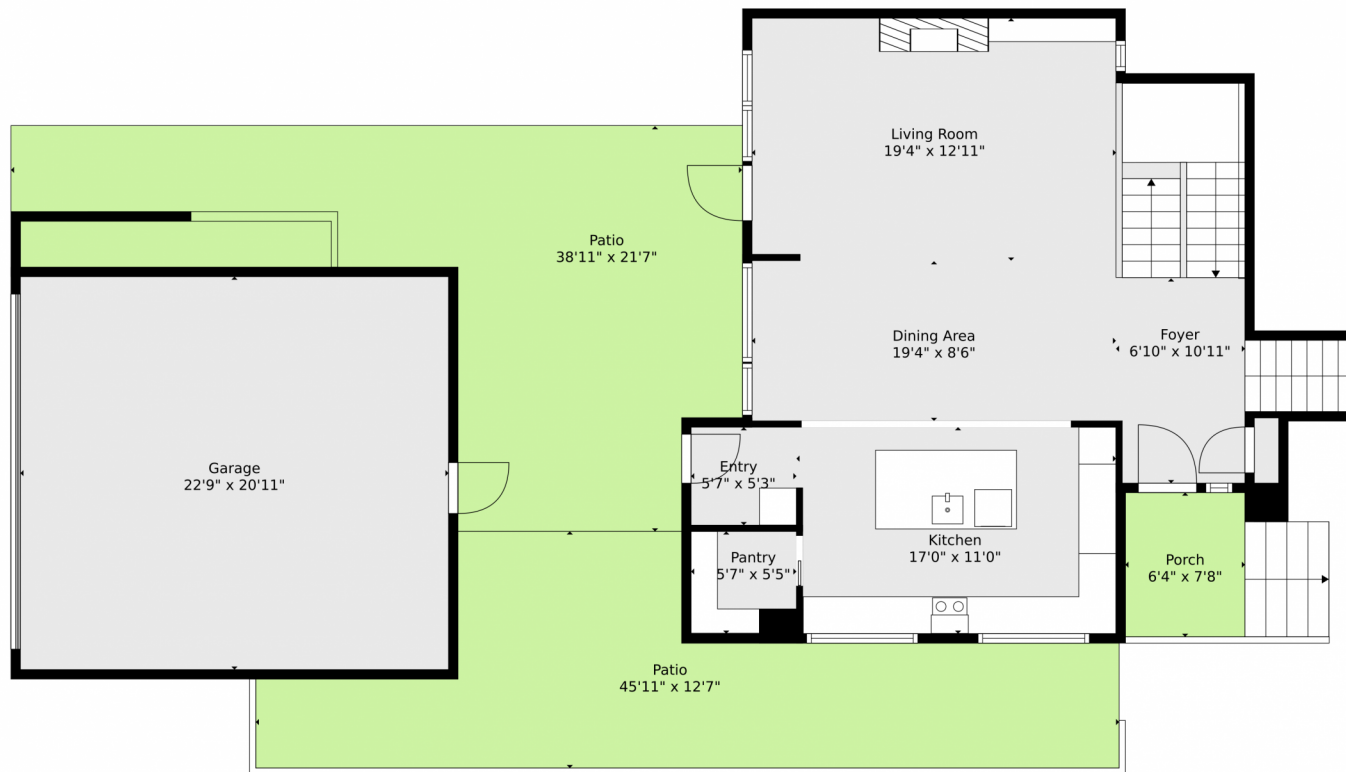


3400 SQFT



Bobby Stier
303-949-3139
bstier1@gmail.com





TOTAL: 3078 sq. ft
BELOW GROUND: 653 sq. ft, FLOOR 2: 846 sq. ft, FLOOR 3: 560 sq. ft, FLOOR 4: 703 sq. ft, FLOOR 5: 316 sq. ft
EXCLUDED AREAS: UTILITY: 45 sq. ft, PATIO: 836 sq. ft, PORCH: 49 sq. ft,
GARAGE: 476 sq. ft, BALCONY: 105 sq. ft, TERRACE: 327 sq. ft,
OPEN TO BELOW: 32 sq. ft, LOW CEILING: 127 sq. ft
WALLS: 348 sq. ft

Floor Plan Created By V1photos.com, Measurements Deamed Highly Reliable But Not Guaranteed.



Disclaimer: Sizes and Dimensions are Approximate, Actual May Vary.



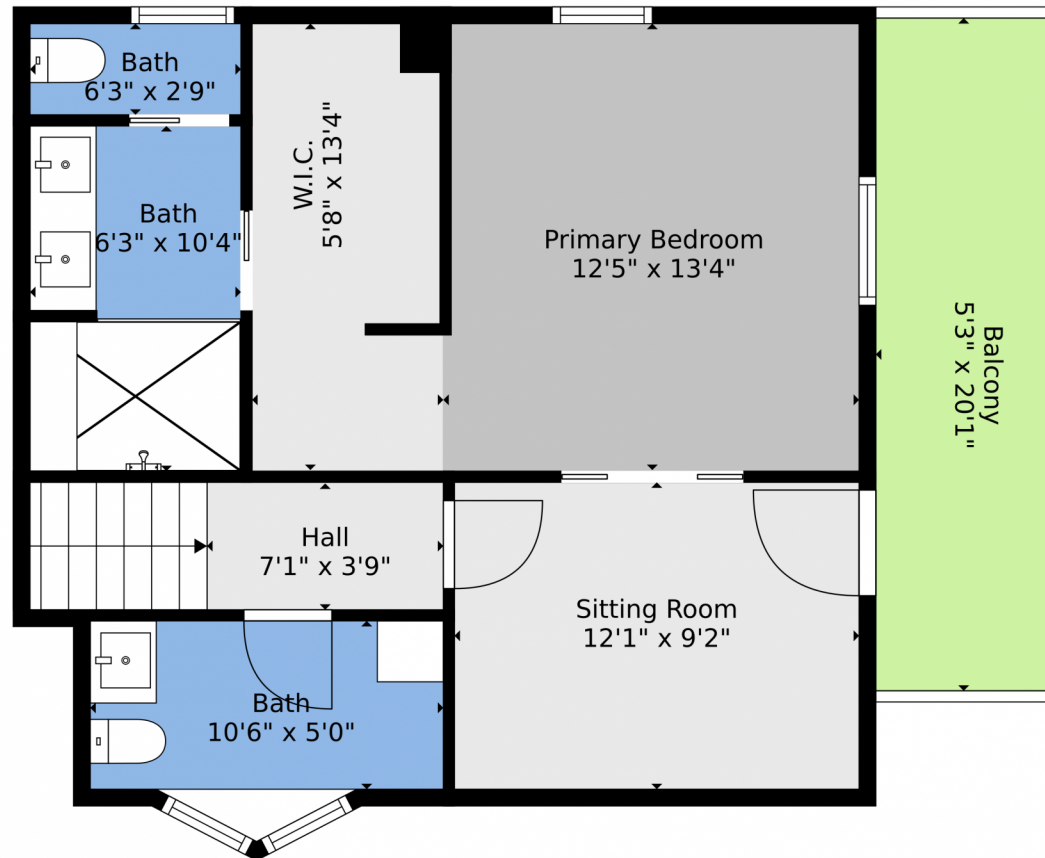
Bobby Stier
303-949-3139
bstier1@gmail.com



Scan code
for more
property
details



1029 9th Street, Boulder, CO 80302 — 2nd Level



TOTAL: 3078 sq. ft
BELOW GROUND: 653 sq. ft, FLOOR 2: 846 sq. ft, FLOOR 3: 560 sq. ft, FLOOR 4: 703 sq. ft, FLOOR 5: 316 sq. ft
EXCLUDED AREAS: UTILITY: 45 sq. ft, PATIO: 836 sq. ft, PORCH: 49 sq. ft,
GARAGE: 476 sq. ft, BALCONY: 105 sq. ft, TERRACE: 327 sq. ft,
OPEN TO BELOW: 32 sq. ft, LOW CEILING: 127 sq. ft
WALLS: 348 sq. ft

Floor Plan Created By V1photos.com, Measurements Deamed Highly Reliable But Not Guaranteed.



Disclaimer: Sizes and Dimensions are Approximate, Actual May Vary.



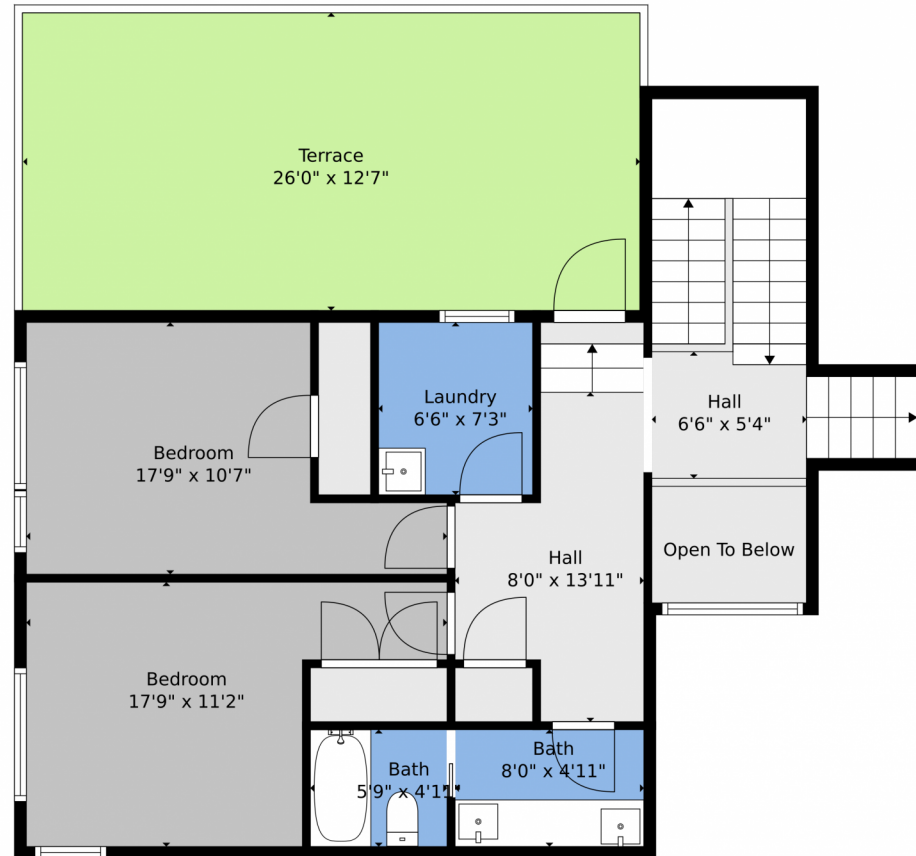
Bobby Stier
303-949-3139
bstier1@gmail.com



Scan code
for more
property
details



1029 9th Street, Boulder, CO 80302 — 3rd Level



TOTAL: 3078 sq. ft
BELOW GROUND: 653 sq. ft, FLOOR 2: 846 sq. ft, FLOOR 3: 560 sq. ft, FLOOR 4: 703 sq. ft, FLOOR 5: 316 sq. ft
EXCLUDED AREAS: UTILITY: 45 sq. ft, PATIO: 836 sq. ft, PORCH: 49 sq. ft,
GARAGE: 476 sq. ft, BALCONY: 105 sq. ft, TERRACE: 327 sq. ft,
OPEN TO BELOW: 32 sq. ft, LOW CEILING: 127 sq. ft
WALLS: 348 sq. ft

Floor Plan Created By V1photos.com, Measurements Deamed Highly Reliable But Not Guaranteed.



Disclaimer: Sizes and Dimensions are Approximate, Actual May Vary.



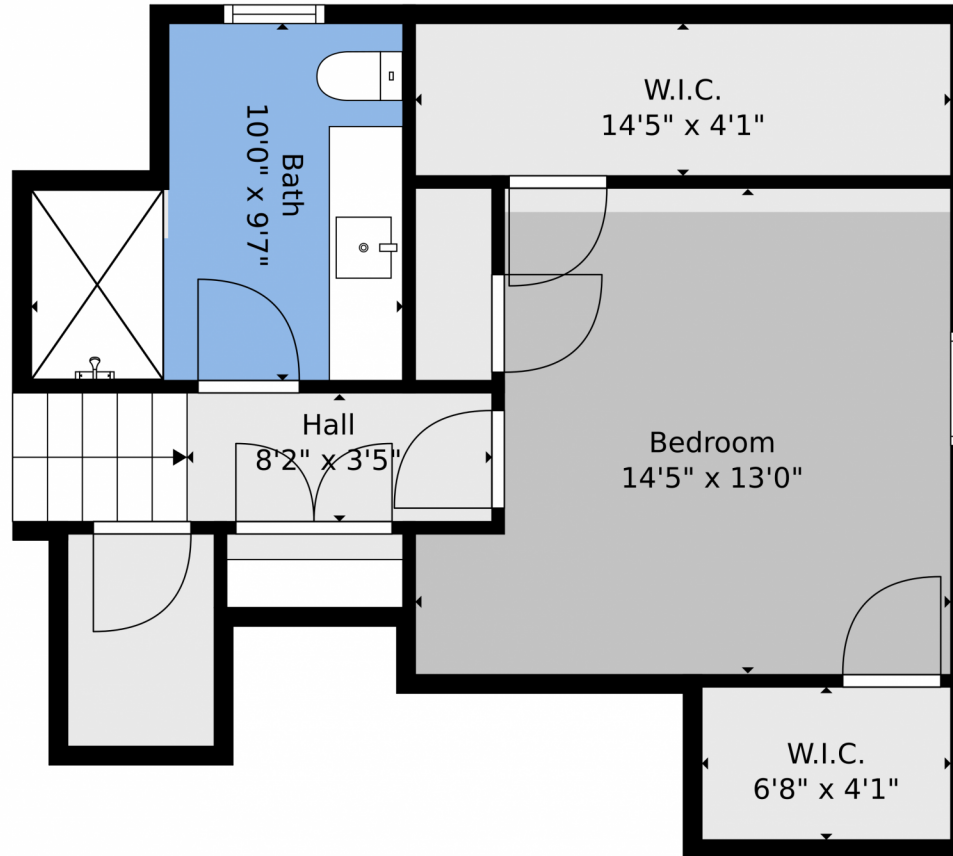
Bobby Stier
303-949-3139
bstier1@gmail.com



Scan code
for more
property
details



1029 9th Street, Boulder, CO 80302 — 4th Level



TOTAL: 3078 sq. ft
BELOW GROUND: 653 sq. ft, FLOOR 2: 846 sq. ft, FLOOR 3: 560 sq. ft, FLOOR 4: 703 sq. ft, FLOOR 5: 316 sq. ft
EXCLUDED AREAS: UTILITY: 45 sq. ft, PATIO: 836 sq. ft, PORCH: 49 sq. ft,
GARAGE: 476 sq. ft, BALCONY: 105 sq. ft, TERRACE: 327 sq. ft,
OPEN TO BELOW: 32 sq. ft, LOW CEILING: 127 sq. ft
WALLS: 348 sq. ft

Floor Plan Created By V1photos.com, Measurements Deamed Highly Reliable But Not Guaranteed.



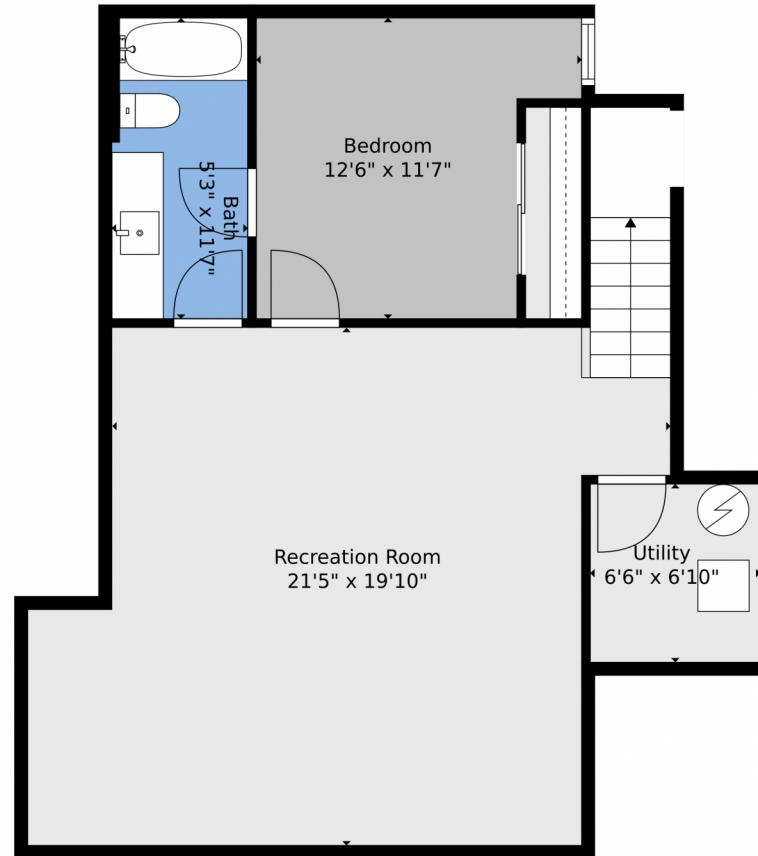
Disclaimer: Sizes and Dimensions are Approximate, Actual May Vary.



Bobby Stier
303-949-3139
bstier1@gmail.com



1029 9th Street, Boulder, CO 80302 — Basement



TOTAL: 3078 sq. ft
BELOW GROUND: 653 sq. ft, FLOOR 2: 846 sq. ft, FLOOR 3: 560 sq. ft, FLOOR 4: 703 sq. ft, FLOOR 5: 316 sq. ft
EXCLUDED AREAS: UTILITY: 45 sq. ft, PATIO: 836 sq. ft, PORCH: 49 sq. ft,
GARAGE: 476 sq. ft, BALCONY: 105 sq. ft, TERRACE: 327 sq. ft,
OPEN TO BELOW: 32 sq. ft, LOW CEILING: 127 sq. ft
WALLS: 348 sq. ft

Floor Plan Created By V1photos.com, Measurements Deamed Highly Reliable But Not Guaranteed.



Disclaimer: Sizes and Dimensions are Approximate, Actual May Vary.



Bobby Stier
303-949-3139
bstier1@gmail.com



Scan code
for more
property
details



1029 9th Street, Boulder, CO 80302 — All Levels



TOTAL: 3078 sq. ft
 BELOW GROUND: 653 sq. ft, FLOOR 2: 846 sq. ft, FLOOR 3: 560 sq. ft, FLOOR 4: 703 sq. ft, FLOOR 5: 316 sq. ft
 EXCLUDED AREAS: UTILITY: 45 sq. ft, PATIO: 836 sq. ft, PORCH: 49 sq. ft,
 GARAGE: 476 sq. ft, BALCONY: 105 sq. ft, TERRACE: 327 sq. ft,
 OPEN TO BELOW: 32 sq. ft, LOW CEILING: 127 sq. ft
 WALLS: 348 sq. ft

Floor Plan Created By V1photos.com, Measurements Deamed Highly Reliable But Not Guaranteed.



Disclaimer: Sizes and Dimensions are Approximate, Actual May Vary.



Bobby Stier
 303-949-3139
 bstier1@gmail.com



Scan code
 for more
 property
 details

