




5741 Isabella Avenue
Timnath, CO 80528



 Single Family

 3700 SQFT

 4 Beds

 3 Baths

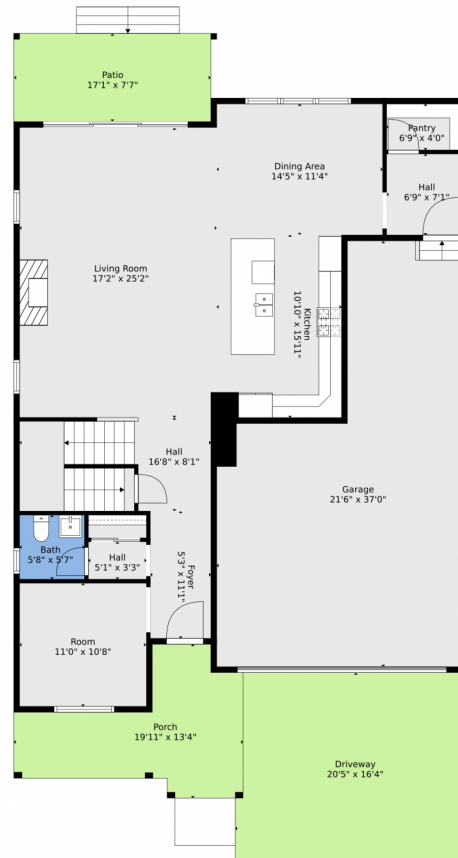
 2 Car



Brian Franzen
970-301-0266
brian@briansellsnoco.com



5741 Isabella Avenue, Timnath, CO 80528 — Main



TOTAL: 2691 sq. ft
BELOW GROUND: 0 sq. ft, FLOOR 2: 1233 sq. ft, FLOOR 3: 1458 sq. ft
EXCLUDED AREAS: BASEMENT: 814 sq. ft, ROOM: 246 sq. ft, HALL: 134 sq. ft,
GARAGE: 616 sq. ft, PATIO: 131 sq. ft, PORCH: 165 sq. ft,
DRIVEWAY: 326 sq. ft, OPEN TO BELOW: 451 sq. ft
WALLS: 308 sq. ft

Floor Plan Created By V1photos.com, Measurements Deamed Highly Reliable But Not Guaranteed.



Disclaimer: Sizes and Dimensions are Approximate, Actual May Vary.



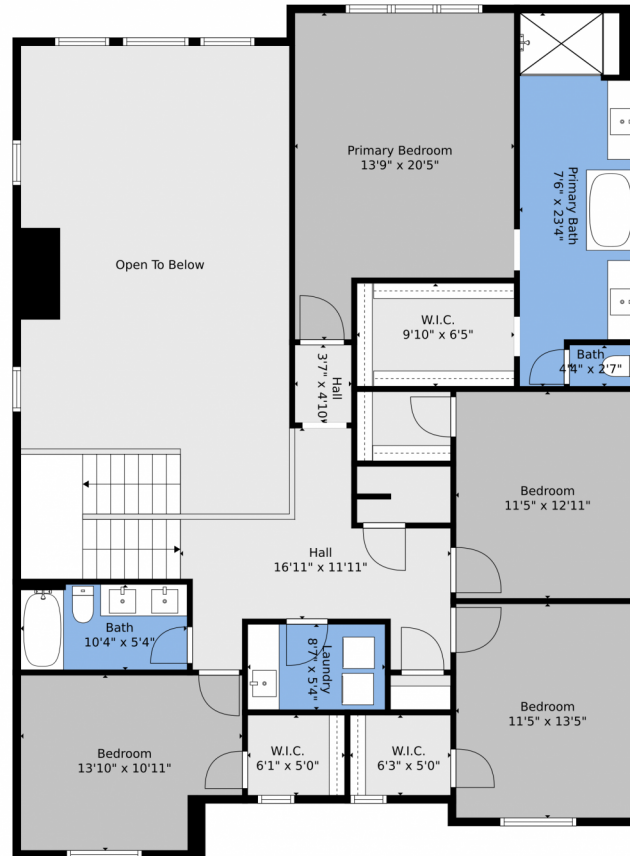
Brian Franzen
970-301-0266
brian@briansellsnoco.com



Scan code
for more
property
details



5741 Isabella Avenue, Timnath, CO 80528 – 2nd Level



TOTAL: 2691 sq. ft
BELOW GROUND: 0 sq. ft, FLOOR 2: 1233 sq. ft, FLOOR 3: 1458 sq. ft
EXCLUDED AREAS: BASEMENT: 814 sq. ft, ROOM: 246 sq. ft, HALL: 134 sq. ft,
GARAGE: 616 sq. ft, PATIO: 131 sq. ft, PORCH: 165 sq. ft,
DRIVEWAY: 326 sq. ft, OPEN TO BELOW: 451 sq. ft
WALLS: 308 sq. ft

Floor Plan Created By V1photos.com, Measurements Deamed Highly Reliable But Not Guaranteed.



Disclaimer: Sizes and Dimensions are Approximate, Actual May Vary.



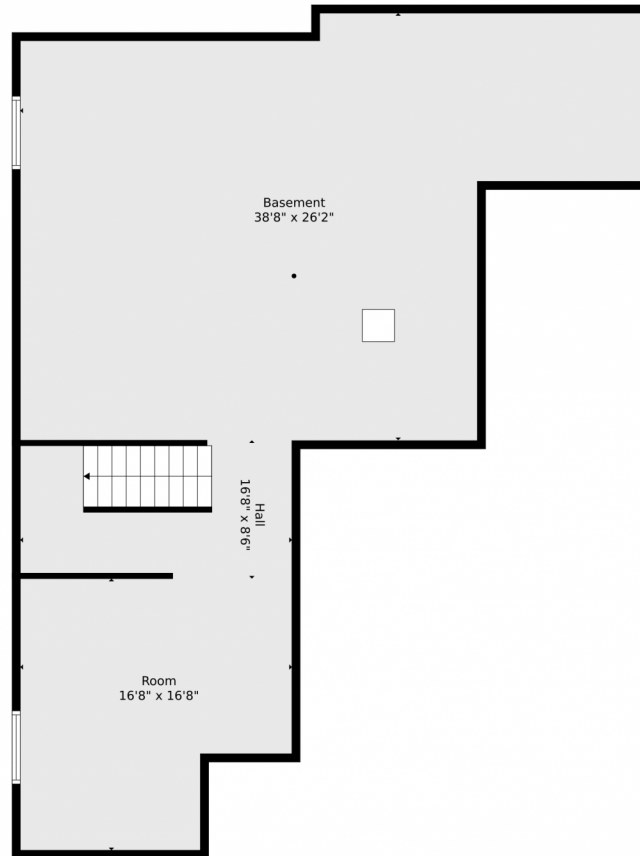
Brian Franzen
970-301-0266
brian@briansellsnoco.com



Scan code
for more
property
details



5741 Isabella Avenue, Timnath, CO 80528 — Basement



TOTAL: 2691 sq. ft
BELOW GROUND: 0 sq. ft, FLOOR 2: 1233 sq. ft, FLOOR 3: 1458 sq. ft
EXCLUDED AREAS: BASEMENT: 814 sq. ft, ROOM: 246 sq. ft, HALL: 134 sq. ft,
GARAGE: 616 sq. ft, PATIO: 131 sq. ft, PORCH: 165 sq. ft,
DRIVEWAY: 326 sq. ft, OPEN TO BELOW: 451 sq. ft
WALLS: 308 sq. ft

Floor Plan Created By V1photos.com, Measurements Deamed Highly Reliable But Not Guaranteed.



Disclaimer: Sizes and Dimensions are Approximate, Actual May Vary.



Brian Franzen
970-301-0266
brian@briansellsnoco.com



5741 Isabella Avenue, Timnath, CO 80528 — All Levels



TOTAL: 2691 sq. ft
 BELOW GROUND: 0 sq. ft, FLOOR 2: 1233 sq. ft, FLOOR 3: 1458 sq. ft
 EXCLUDED AREAS: BASEMENT: 814 sq. ft, ROOM: 246 sq. ft, HALL: 134 sq. ft,
 GARAGE: 616 sq. ft, PATIO: 131 sq. ft, PORCH: 165 sq. ft,
 DRIVEWAY: 326 sq. ft, OPEN TO BELOW: 451 sq. ft
 WALLS: 308 sq. ft

Floor Plan Created By V1photos.com, Measurements Deamed Highly Reliable But Not Guaranteed.



Disclaimer: Sizes and Dimensions are Approximate, Actual May Vary.



Brian Franzen
 970-301-0266
 brian@briansellsnoco.com



Scan code
 for more
 property
 details

