



8673 Cloverleaf Circle
Parker, CO 80134
COMMUNITY: Cottonwood

MLS # 8613458
PRICE \$500,000



Single Family



1474 SQFT



3 Beds



2/1 Baths



2 Car



0.13 Acre



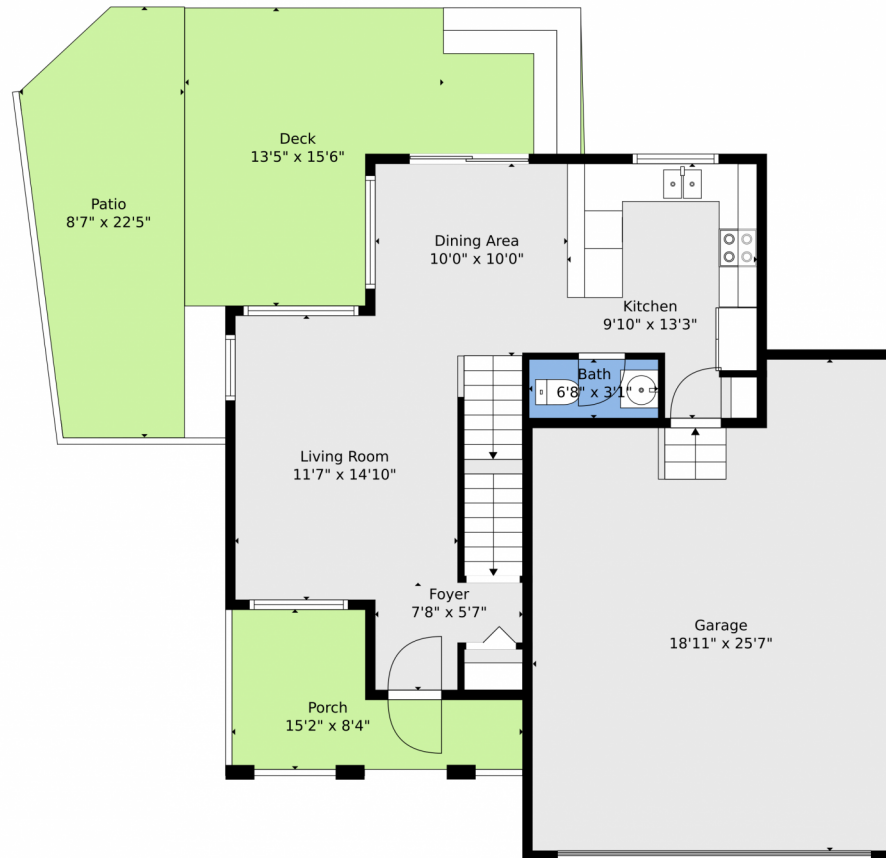
Tatyana Sturm
720-350-5909
tatyana@exitrealtydtc.com
<https://thestorckteam.com>



Scan code
for more
property
details



8673 Cloverleaf Circle, Parker, CO 80134 — Main



TOTAL: 1296 sq. ft
BELOW GROUND: 194 sq. ft, FLOOR 2: 480 sq. ft, FLOOR 3: 622 sq. ft
EXCLUDED AREAS: UNDEFINED: 24 sq. ft, UTILITY: 15 sq. ft, GARAGE: 441 sq. ft,
PORCH: 88 sq. ft, DECK: 232 sq. ft, PATIO: 162 sq. ft,
OPEN TO BELOW: 54 sq. ft
WALLS: 179 sq. ft

Floor Plan Created By V1photos.com, Measurements Deamed Highly Reliable But Not Guaranteed.



Disclaimer: Sizes and Dimensions are Approximate, Actual May Vary.



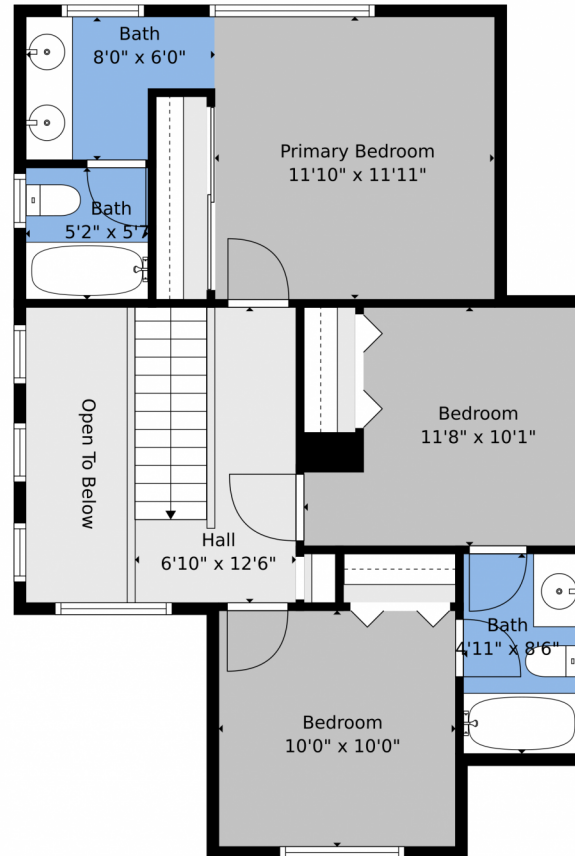
Tatyana Sturm
720-350-5909
tatyana@exitrealtydtc.com
<https://thestorckteam.com>



Scan code
for more
property
details



8673 Cloverleaf Circle, Parker, CO 80134 – 2nd Level



TOTAL: 1296 sq. ft
BELOW GROUND: 194 sq. ft, FLOOR 2: 480 sq. ft, FLOOR 3: 622 sq. ft
EXCLUDED AREAS: UNDEFINED: 24 sq. ft, UTILITY: 15 sq. ft, GARAGE: 441 sq. ft,
PORCH: 88 sq. ft, DECK: 232 sq. ft, PATIO: 162 sq. ft,
OPEN TO BELOW: 54 sq. ft
WALLS: 179 sq. ft

Floor Plan Created By V1photos.com, Measurements Deamed Highly Reliable But Not Guaranteed.



Disclaimer: Sizes and Dimensions are Approximate, Actual May Vary.



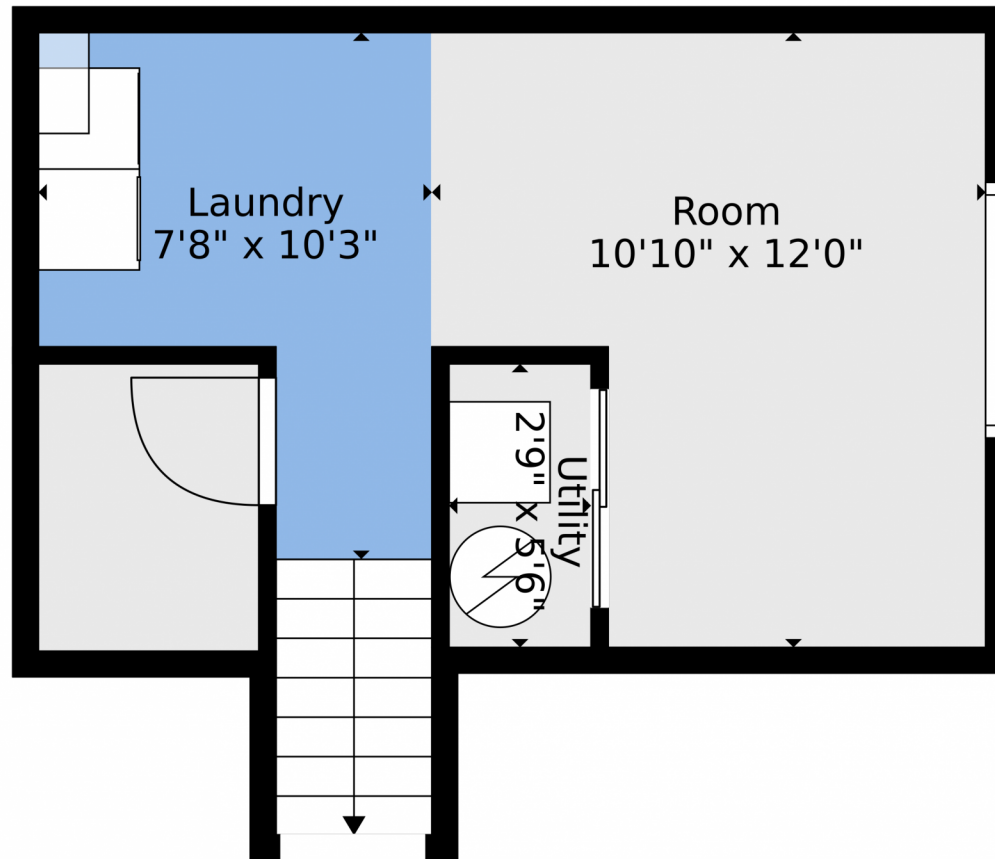
Tatyana Sturm
720-350-5909
tatyana@exitrealtydtc.com
<https://thestorckteam.com>



Scan code
for more
property
details



8673 Cloverleaf Circle, Parker, CO 80134 — Basement



TOTAL: 1296 sq. ft
BELOW GROUND: 194 sq. ft, FLOOR 2: 480 sq. ft, FLOOR 3: 622 sq. ft
EXCLUDED AREAS: UNDEFINED: 24 sq. ft, UTILITY: 15 sq. ft, GARAGE: 441 sq. ft,
PORCH: 88 sq. ft, DECK: 232 sq. ft, PATIO: 162 sq. ft,
OPEN TO BELOW: 54 sq. ft
WALLS: 179 sq. ft

Floor Plan Created By V1photos.com, Measurements Deamed Highly Reliable But Not Guaranteed.



Disclaimer: Sizes and Dimensions are Approximate, Actual May Vary.



Tatyana Sturm
720-350-5909
tatyana@exitrealtydtc.com
<https://thestorckteam.com>



Scan code
for more
property
details



8673 Cloverleaf Circle, Parker, CO 80134 — All Levels



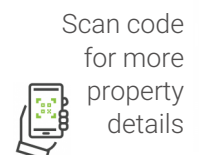
TOTAL: 1296 sq. ft
BELOW GROUND: 194 sq. ft, FLOOR 2: 480 sq. ft, FLOOR 3: 622 sq. ft
EXCLUDED AREAS: UNDEFINED: 24 sq. ft, UTILITY: 15 sq. ft, GARAGE: 441 sq. ft,
PORCH: 88 sq. ft, DECK: 232 sq. ft, PATIO: 162 sq. ft,
OPEN TO BELOW: 54 sq. ft
WALLS: 179 sq. ft

Floor Plan Created By V1photos.com, Measurements Deamed Highly Reliable But Not Guaranteed.

Disclaimer: Sizes and Dimensions are Approximate, Actual May Vary.



Tatyana Sturm
720-350-5909
tatyana@exitrealttydc.com
<https://thestorckteam.com>



Scan code
for more
property
details

