



Single Family



2197 SQFT



3 Beds



3/1 Baths



2 Car



0.21 Acre

PROPERTY DETAILS

Your dream home has just hit the market! Nestled at the end of a private drive and adjacent to Ute Valley Park, this unique retreat offers nature, privacy, and stylish updates. Enjoy seclusion while benefiting from west side living. Almost every window provides stunning views of the park, showcasing wildlife and natural beauty. The yard features a lush lawn and a backyard with wildflowers and rock formations, attracting deer, coyotes, and more. Inside, the updated kitchen boasts soft-close cabinetry and custom countertops. The spa-like primary bathroom includes a soaking tub and walk-in shower. With luxury flooring, a new driveway, and custom storage, this polished home offers tranquility and modern conveniences. Schedule your tour today!



Annie Collins
612-743-0875
anniecollins@kw.com



Scan code
for more
property
details



6305 Crested Butte Circle, Colorado Springs, CO 80919 — Main



TOTAL: 2079 sq. ft
BELOW GROUND: 385 sq. ft, FLOOR 2: 422 sq. ft, FLOOR 3: 479 sq. ft, FLOOR 4: 793 sq. ft
EXCLUDED AREAS: UTILITY: 27 sq. ft, GARAGE: 438 sq. ft, PORCH: 46 sq. ft,
PATIO: 584 sq. ft, DECK: 138 sq. ft
WALLS: 236 sq. ft

Floor Plan Created By V1photos.com, Measurements Deamed Highly Reliable But Not Guaranteed.



Disclaimer: Sizes and Dimensions are Approximate, Actual May Vary.



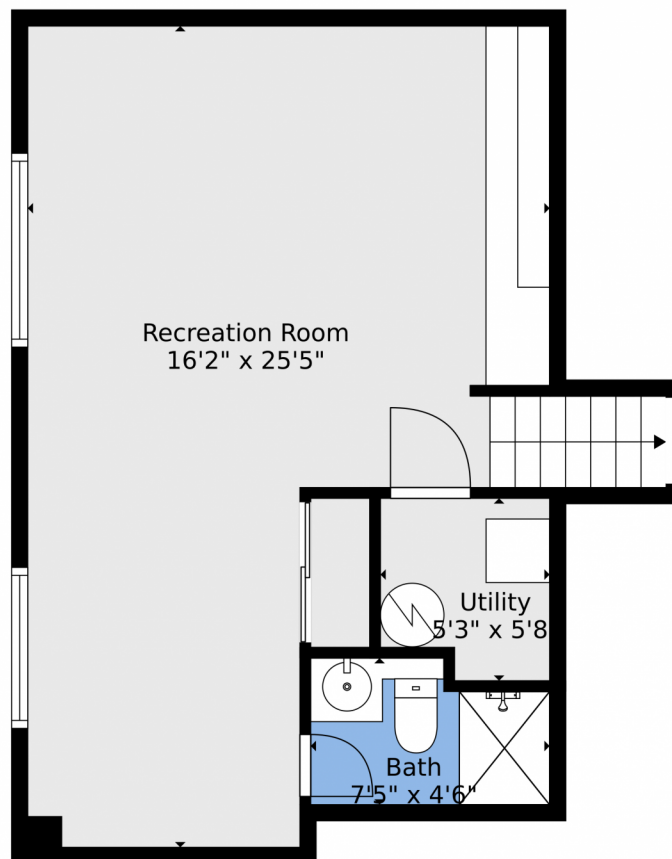
Annie Collins
612-743-0875
anniecollins@kw.com



Scan code
for more
property
details



6305 Crested Butte Circle, Colorado Springs, CO 80919 — Lower Level



TOTAL: 2079 sq. ft
BELOW GROUND: 385 sq. ft, FLOOR 2: 422 sq. ft, FLOOR 3: 479 sq. ft, FLOOR 4: 793 sq. ft
EXCLUDED AREAS: UTILITY: 27 sq. ft, GARAGE: 438 sq. ft, PORCH: 46 sq. ft,
PATIO: 584 sq. ft, DECK: 138 sq. ft
WALLS: 236 sq. ft

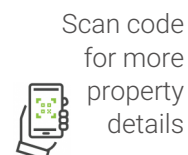
Floor Plan Created By V1photos.com, Measurements Deamed Highly Reliable But Not Guaranteed.



Disclaimer: Sizes and Dimensions are Approximate, Actual May Vary.



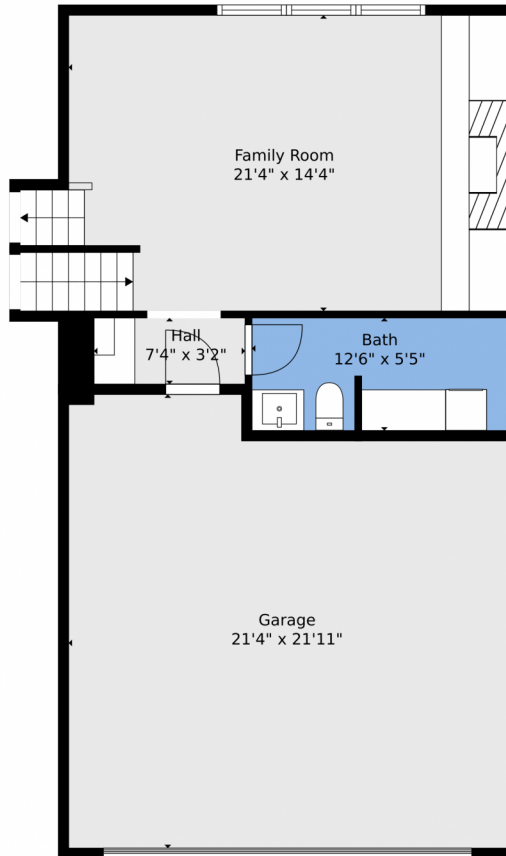
Annie Collins
612-743-0875
anniecollins@kw.com



Scan code
for more
property
details



6305 Crested Butte Circle, Colorado Springs, CO 80919 — 2nd Level



TOTAL: 2079 sq. ft
BELOW GROUND: 385 sq. ft, FLOOR 2: 422 sq. ft, FLOOR 3: 479 sq. ft, FLOOR 4: 793 sq. ft
EXCLUDED AREAS: UTILITY: 27 sq. ft, GARAGE: 438 sq. ft, PORCH: 46 sq. ft,
PATIO: 584 sq. ft, DECK: 138 sq. ft
WALLS: 236 sq. ft

Floor Plan Created By V1photos.com, Measurements Deamed Highly Reliable But Not Guaranteed.



Disclaimer: Sizes and Dimensions are Approximate, Actual May Vary.



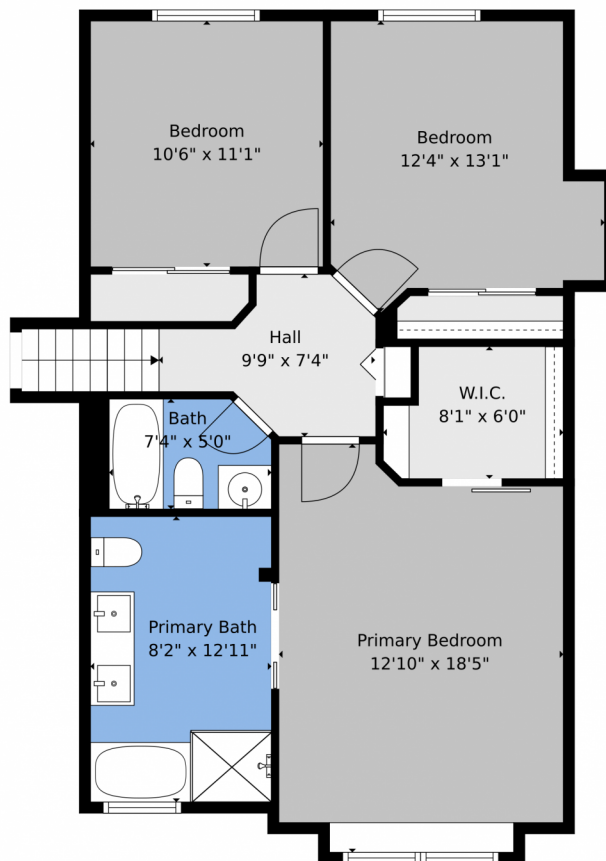
Annie Collins
612-743-0875
anniecollins@kw.com



Scan code
for more
property
details



6305 Crested Butte Circle, Colorado Springs, CO 80919 — 3rd Level



TOTAL: 2079 sq. ft
BELOW GROUND: 385 sq. ft, FLOOR 2: 422 sq. ft, FLOOR 3: 479 sq. ft, FLOOR 4: 793 sq. ft
EXCLUDED AREAS: UTILITY: 27 sq. ft, GARAGE: 438 sq. ft, PORCH: 46 sq. ft,
PATIO: 584 sq. ft, DECK: 138 sq. ft
WALLS: 236 sq. ft

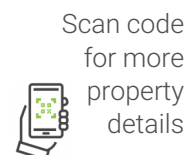
Floor Plan Created By V1photos.com, Measurements Deamed Highly Reliable But Not Guaranteed.



Disclaimer: Sizes and Dimensions are Approximate, Actual May Vary.



Annie Collins
612-743-0875
anniecollins@kw.com



Scan code
for more
property
details



6305 Crested Butte Circle, Colorado Springs, CO 80919 — All Levels



TOTAL: 2079 sq. ft
BELOW GROUND: 385 sq. ft, FLOOR 2: 422 sq. ft, FLOOR 3: 479 sq. ft, FLOOR 4: 793 sq. ft
EXCLUDED AREAS: UTILITY: 27 sq. ft, GARAGE: 438 sq. ft, PORCH: 46 sq. ft,
PATIO: 584 sq. ft, DECK: 138 sq. ft
WALLS: 236 sq. ft

Floor Plan Created By V1photos.com, Measurements Deamed Highly Reliable But Not Guaranteed.



Disclaimer: Sizes and Dimensions are Approximate, Actual May Vary.



Annie Collins
612-743-0875
anniecollins@kw.com



Scan code
for more
property
details

