



8753 Crimson Clover Lane  
Longmont, CO 80503



Single Family



4626 SQFT



Mark Brigham  
303-883-3947  
markb@boulderco.com



Scan code  
for more  
property  
details



8753 Crimson Clover Lane, Longmont, CO 80503 — Main



**TOTAL: 4306 sq. ft**  
FLOOR 1: 980 sq. ft, FLOOR 2: 0 sq. ft, FLOOR 3: 3326 sq. ft  
EXCLUDED AREAS: STORAGE: 166 sq. ft, GARAGE: 1896 sq. ft, PORCH: 170 sq. ft,  
UTILITY: 115 sq. ft, PATIO: 2343 sq. ft  
WALLS: 423 sq. ft

Floor Plan Created By V1photos.com, Measurements Deamed Highly Reliable But Not Guaranteed.



Disclaimer: Sizes and Dimensions are Approximate, Actual May Vary.



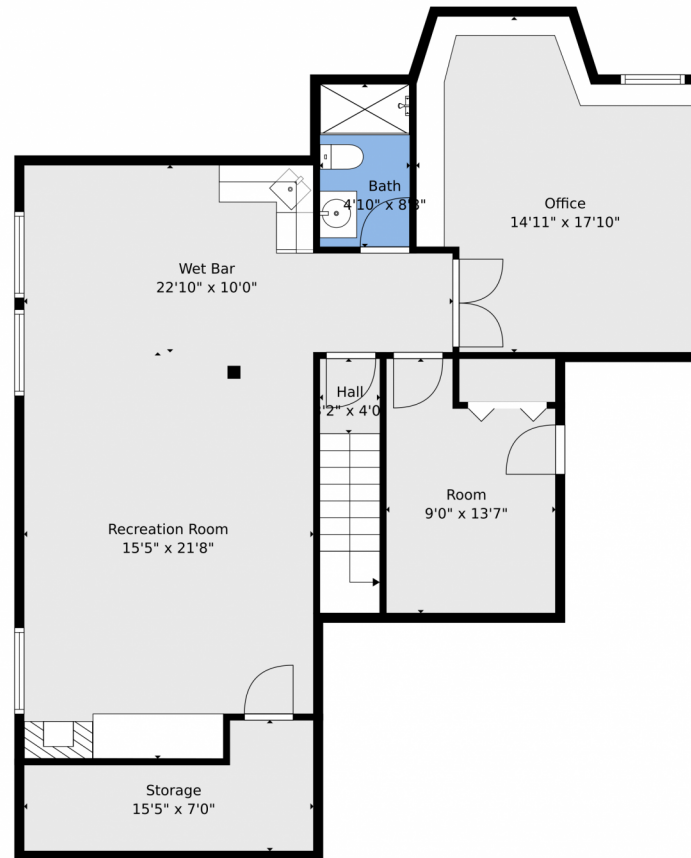
**Mark Brigham**  
303-883-3947  
markb@boulderco.com



Scan code  
for more  
property  
details



## 8753 Crimson Clover Lane, Longmont, CO 80503 — Basement



**TOTAL: 4306 sq. ft**  
FLOOR 1: 980 sq. ft, FLOOR 2: 0 sq. ft, FLOOR 3: 3326 sq. ft  
EXCLUDED AREAS: STORAGE: 166 sq. ft, GARAGE: 1896 sq. ft, PORCH: 170 sq. ft,  
UTILITY: 115 sq. ft, PATIO: 2343 sq. ft  
WALLS: 423 sq. ft

Floor Plan Created By V1photos.com, Measurements Deamed Highly Reliable But Not Guaranteed.



Disclaimer: Sizes and Dimensions are Approximate, Actual May Vary.



**Mark Brigham**  
303-883-3947  
markb@boulderco.com

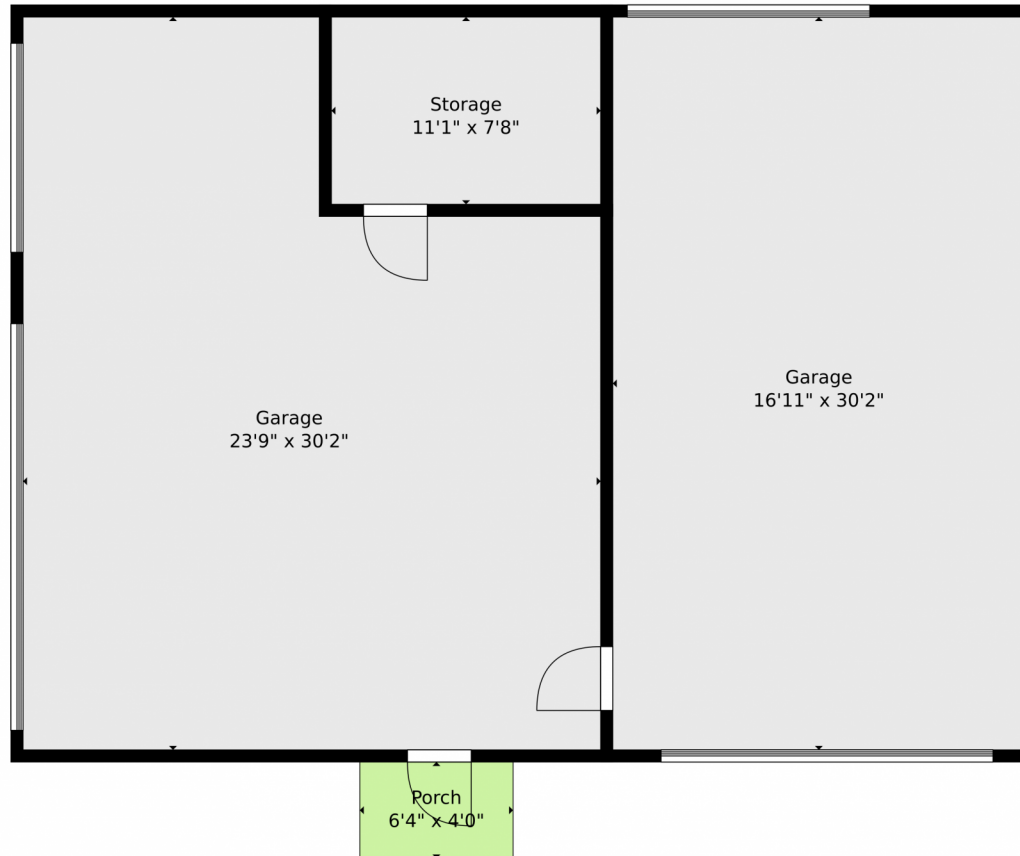


Scan code  
for more  
property  
details





## 8753 Crimson Clover Lane, Longmont, CO 80503 — Detached Garage



**TOTAL: 4306 sq. ft**  
FLOOR 1: 980 sq. ft, FLOOR 2: 0 sq. ft, FLOOR 3: 3326 sq. ft  
EXCLUDED AREAS: STORAGE: 166 sq. ft, GARAGE: 1896 sq. ft, PORCH: 170 sq. ft,  
UTILITY: 115 sq. ft, PATIO: 2343 sq. ft  
WALLS: 423 sq. ft

Floor Plan Created By V1photos.com, Measurements Deamed Highly Reliable But Not Guaranteed.



Disclaimer: Sizes and Dimensions are Approximate, Actual May Vary.



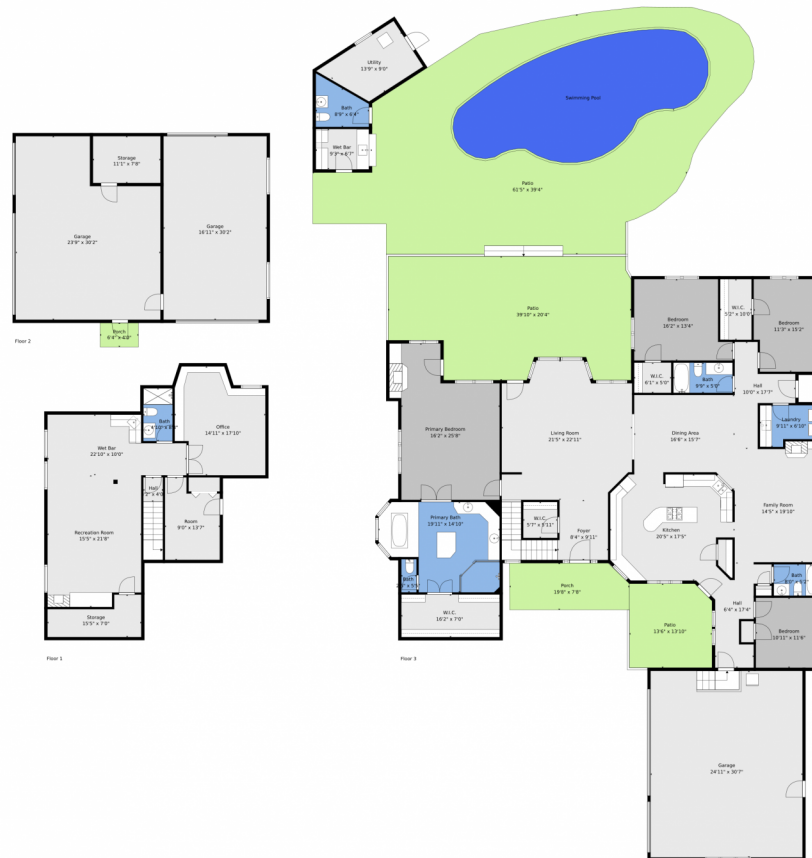
**Mark Brigham**  
303-883-3947  
markb@boulderco.com



Scan code  
for more  
property  
details



# 8753 Crimson Clover Lane, Longmont, CO 80503 — All Levels



**TOTAL: 4306 sq. ft**  
FLOOR 1: 980 sq. ft, FLOOR 2: 0 sq. ft, FLOOR 3: 3326 sq. ft  
EXCLUDED AREAS: STORAGE: 166 sq. ft, GARAGE: 1896 sq. ft, PORCH: 170 sq. ft,  
UTILITY: 115 sq. ft, PATIO: 2343 sq. ft  
WALLS: 423 sq. ft

Floor Plan Created By V1photos.com, Measurements Deamed Highly Reliable But Not Guaranteed.



Disclaimer: Sizes and Dimensions are Approximate, Actual May Vary.



**Mark Brigham**  
303-883-3947  
markb@boulderco.com

