



Multi Family



3280 SQFT



6 Beds



4 Baths



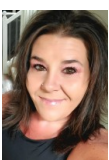
4 Car



0.22 Acre

PROPERTY DETAILS

Income Opportunity with Stunning Lake Views! Fully remodeled duplex facing Lake Loveland, ideal for investment or multi-generational living. Each unit features a bright living room with deck access, a modern kitchen with granite countertops, and stainless steel appliances. There are two bedrooms, a full bathroom, and laundry on the main level. The lower level offers a cozy living area with a wet bar, an additional bedroom and bath, plus walk-out access to a private 2-car garage for each unit. Enjoy outdoor living on the expansive wrap-around deck with lake views. Recent upgrades include new paint, plumbing, light fixtures, flooring, and windows. Located minutes from downtown Loveland and close to shopping and dining. Perfect for owner-occupants or investors. Schedule your showing today!



RaNae Rodriguez

303-875-4091

ra-nae@mscadvisors.com

<http://www.mscadvisors.com>



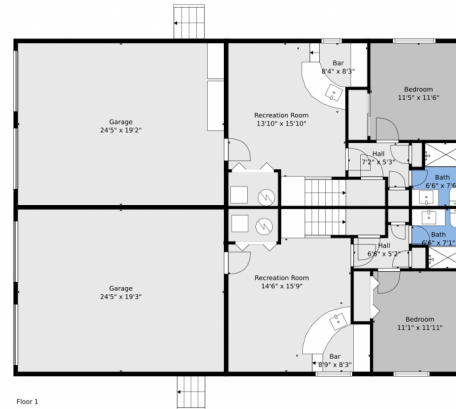
Scan code
for more
property
details



2503-2507 North Taft Avenue, Loveland, CO 80538 — All Levels



Floor 2



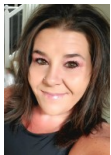
Floor 1

TOTAL: 3167 sq. ft
FLOOR 1: 1099 sq. ft, FLOOR 2: 2068 sq. ft
EXCLUDED AREAS: GARAGE: 937 sq. ft, DECK: 200 sq. ft, PORCH: 168 sq. ft
WALLS: 217 sq. ft

Floor Plan Created By V1photos.com, Measurements Deamed Highly Reliable But Not Guaranteed.



Disclaimer: Sizes and Dimensions are Approximate, Actual May Vary.



RaNae Rodriguez
303-875-4091
ranae@mscadvisors.com
<http://www.mscadvisors.com>



Scan code
for more
property
details

