



8210 Broughton Court
Colorado Springs, CO 80920
COMMUNITY: Trafalgar Point



Single Family



3716 SQFT



3 Beds



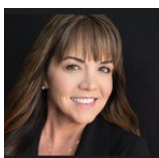
2/1 Baths



2 Car



0.26 Acre



Maura Mitchell
303-808-8580
realtywithmaura@gmail.com



Scan code
for more
property
details



8210 Broughton Court, Colorado Springs, CO 80920 — Main

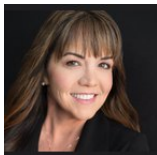


TOTAL: 2170 sq. ft
BELOW GROUND: 0 sq. ft, FLOOR 2: 1150 sq. ft, FLOOR 3: 1020 sq. ft
EXCLUDED AREAS: BASEMENT: 1078 sq. ft, PATIO: 645 sq. ft, GARAGE: 392 sq. ft,
PORCH: 212 sq. ft, DECK: 378 sq. ft, FIREPLACE: 10 sq. ft,
OPEN TO BELOW: 55 sq. ft
WALLS: 252 sq. ft

Floor Plan Created By V1photos.com, Measurements Deamed Highly Reliable But Not Guaranteed.



Disclaimer: Sizes and Dimensions are Approximate, Actual May Vary.



Maura Mitchell
303-808-8580
realtywithmaura@gmail.com



Scan code
for more
property
details



8210 Broughton Court, Colorado Springs, CO 80920 — Basement

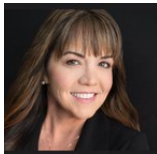


TOTAL: 2170 sq. ft
BELOW GROUND: 0 sq. ft, FLOOR 2: 1150 sq. ft, FLOOR 3: 1020 sq. ft
EXCLUDED AREAS: BASEMENT: 1078 sq. ft, PATIO: 645 sq. ft, GARAGE: 392 sq. ft,
PORCH: 212 sq. ft, DECK: 378 sq. ft, FIREPLACE: 10 sq. ft,
OPEN TO BELOW: 55 sq. ft
WALLS: 252 sq. ft

Floor Plan Created By V1photos.com, Measurements Deamed Highly Reliable But Not Guaranteed.



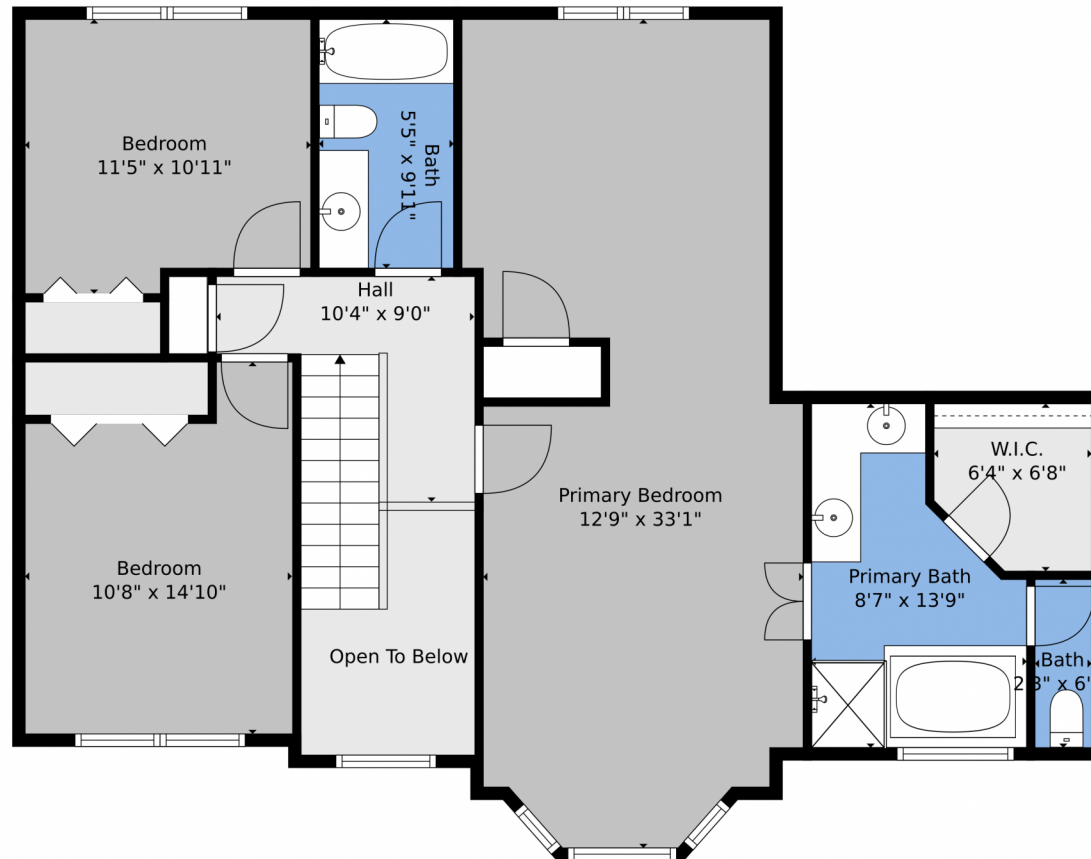
Disclaimer: Sizes and Dimensions are Approximate, Actual May Vary.



Maura Mitchell
303-808-8580
realtywithmaura@gmail.com



8210 Broughton Court, Colorado Springs, CO 80920 – 2nd Level

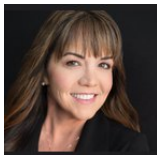


TOTAL: 2170 sq. ft
BELOW GROUND: 0 sq. ft, FLOOR 2: 1150 sq. ft, FLOOR 3: 1020 sq. ft
EXCLUDED AREAS: BASEMENT: 1078 sq. ft, PATIO: 645 sq. ft, GARAGE: 392 sq. ft,
PORCH: 212 sq. ft, DECK: 378 sq. ft, FIREPLACE: 10 sq. ft,
OPEN TO BELOW: 55 sq. ft
WALLS: 252 sq. ft

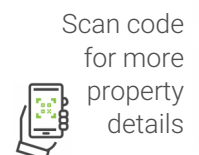
Floor Plan Created By V1photos.com, Measurements Deamed Highly Reliable But Not Guaranteed.



Disclaimer: Sizes and Dimensions are Approximate, Actual May Vary.



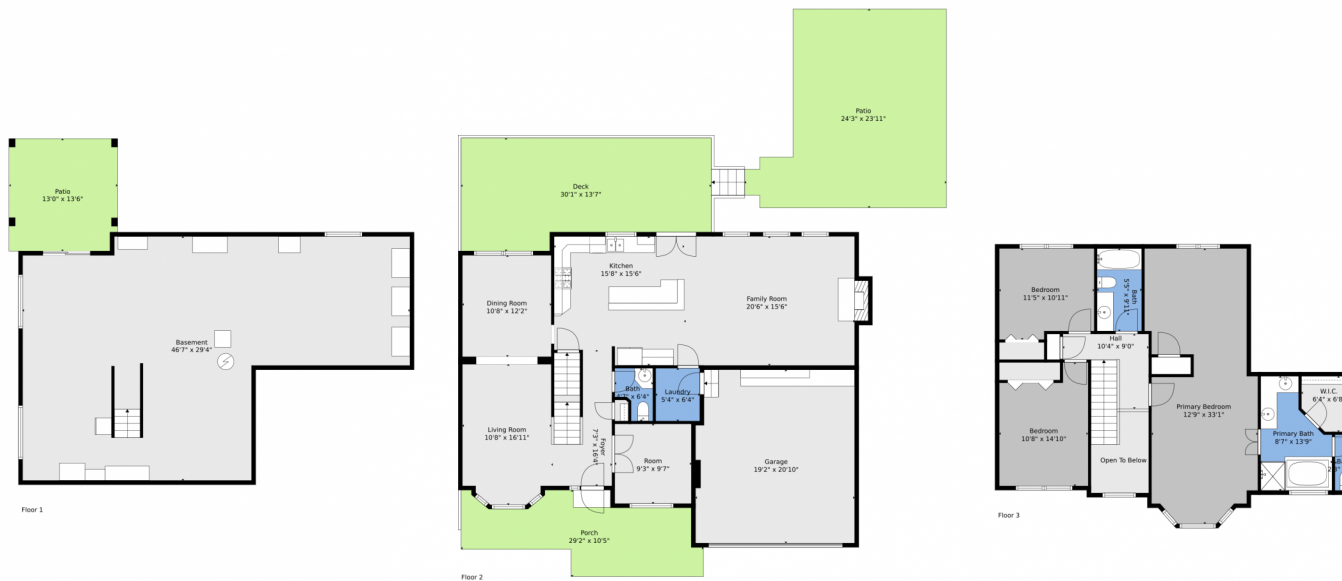
Maura Mitchell
303-808-8580
realtywithmaura@gmail.com



Scan code
for more
property
details



8210 Broughton Court, Colorado Springs, CO 80920 — All Levels

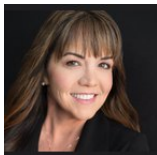


TOTAL: 2170 sq. ft
BELOW GROUND: 0 sq. ft, FLOOR 2: 1150 sq. ft, FLOOR 3: 1020 sq. ft
EXCLUDED AREAS: BASEMENT: 1078 sq. ft, PATIO: 645 sq. ft, GARAGE: 392 sq. ft,
PORCH: 212 sq. ft, DECK: 378 sq. ft, FIREPLACE: 10 sq. ft,
OPEN TO BELOW: 55 sq. ft
WALLS: 252 sq. ft

Floor Plan Created By V1photos.com, Measurements Deamed Highly Reliable But Not Guaranteed.



Disclaimer: Sizes and Dimensions are Approximate, Actual May Vary.



Maura Mitchell
303-808-8580
realtywithmaura@gmail.com

