



floorplan\_single\_2



Single Family



3046 SQFT



5 Beds



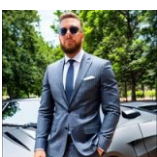
4/1 Baths



2 Car

## PROPERTY DETAILS

✪ Welcome to Your Dream Getaway ✪ Experience the charm of this beautifully renovated Victorian manor in Denver's iconic Capitol Hill. This luxurious 4-bedroom, 4-bathroom home is designed for unforgettable stays, whether for family gatherings, special occasions, or corporate retreats. Enjoy the perfect blend of historic elegance and modern comfort, making every moment of your visit extraordinary. Create lasting memories in this stunning retreat!



**Steven Schober**  
 303-587-9303  
 stevie@wealthbyre.com



Scan code  
 for more  
 property  
 details



## 1251 North Clarkson street, Denver, CO 80218 — Lower Level



**TOTAL: 2749 sq. ft**  
BELOW GROUND: 322 sq. ft, FLOOR 2: 1215 sq. ft, FLOOR 3: 1212 sq. ft  
EXCLUDED AREAS: UTILITY: 28 sq. ft, STORAGE: 43 sq. ft, PATIO: 356 sq. ft,  
GARAGE: 535 sq. ft, PORCH: 128 sq. ft, DECK: 219 sq. ft,  
FIREPLACE: 9 sq. ft  
WALLS: 267 sq. ft

Floor Plan Created By V1photos.com, Measurements Deamed Highly Reliable But Not Guaranteed.



Disclaimer: Sizes and Dimensions are Approximate, Actual May Vary.



**Steven Schober**  
303-587-9303  
stevie@wealthbyre.com



# 1251 North Clarkson street, Denver, CO 80218 — Main



**TOTAL: 2749 sq. ft**  
BELOW GROUND: 322 sq. ft, FLOOR 2: 1215 sq. ft, FLOOR 3: 1212 sq. ft  
EXCLUDED AREAS: UTILITY: 28 sq. ft, STORAGE: 43 sq. ft, PATIO: 356 sq. ft,  
GARAGE: 535 sq. ft, PORCH: 128 sq. ft, DECK: 219 sq. ft,  
FIREPLACE: 9 sq. ft  
WALLS: 267 sq. ft

Floor Plan Created By V1photos.com, Measurements Deamed Highly Reliable But Not Guaranteed.



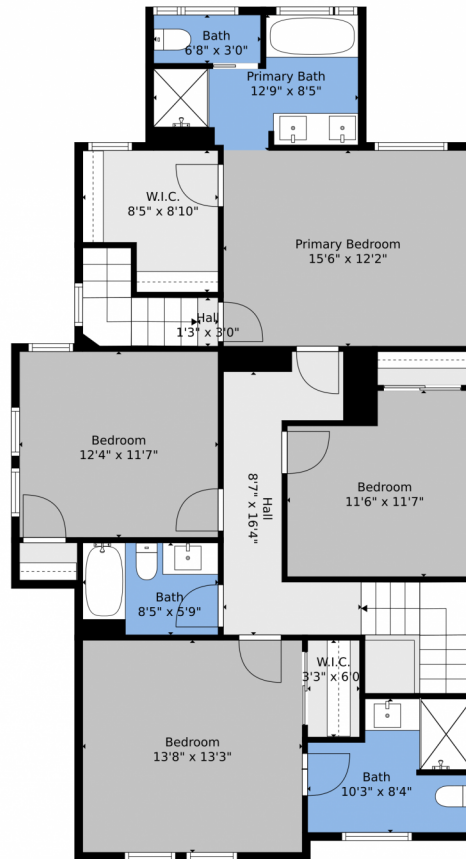
Disclaimer: Sizes and Dimensions are Approximate, Actual May Vary.



**Steven Schober**  
303-587-9303  
stevie@wealthbyre.com



## 1251 North Clarkson street, Denver, CO 80218 — 2nd Level



**TOTAL: 2749 sq. ft**  
BELOW GROUND: 322 sq. ft, FLOOR 2: 1215 sq. ft, FLOOR 3: 1212 sq. ft  
EXCLUDED AREAS: UTILITY: 28 sq. ft, STORAGE: 43 sq. ft, PATIO: 356 sq. ft,  
GARAGE: 535 sq. ft, PORCH: 128 sq. ft, DECK: 219 sq. ft,  
FIREPLACE: 9 sq. ft  
WALLS: 267 sq. ft

Floor Plan Created By V1photos.com, Measurements Deamed Highly Reliable But Not Guaranteed.



Disclaimer: Sizes and Dimensions are Approximate, Actual May Vary.

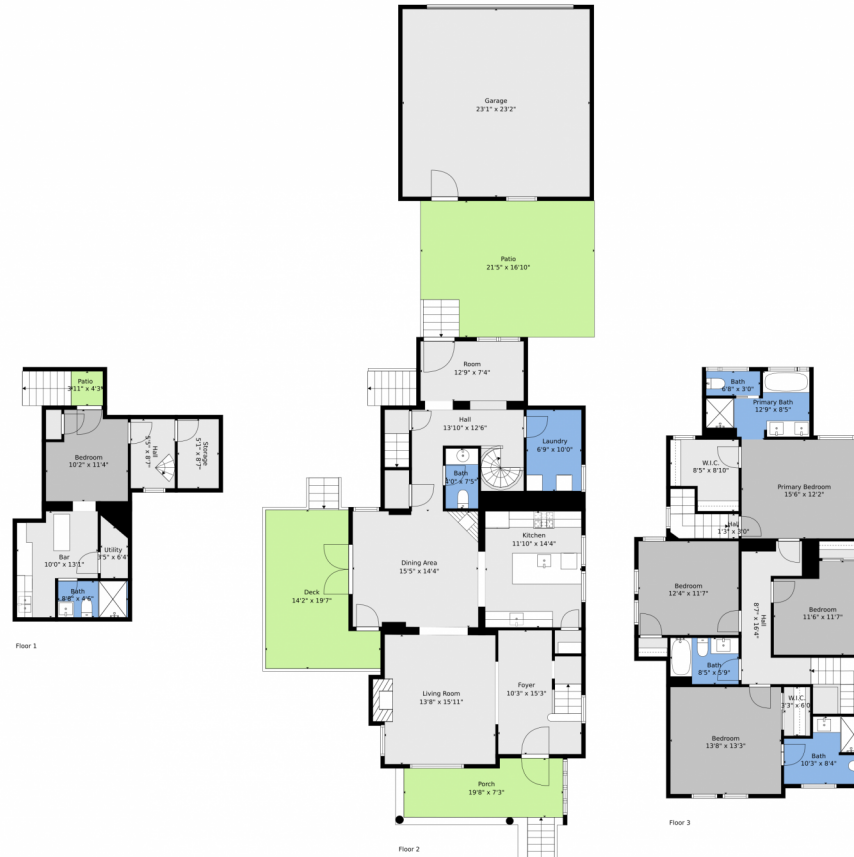


**Steven Schober**  
303-587-9303  
stevie@wealthbyre.com





# 1251 North Clarkson street, Denver, CO 80218 — All Levels



**TOTAL: 2749 sq. ft**  
BELOW GROUND: 322 sq. ft, FLOOR 2: 1215 sq. ft, FLOOR 3: 1212 sq. ft  
EXCLUDED AREAS: UTILITY: 28 sq. ft, STORAGE: 43 sq. ft, PATIO: 356 sq. ft,  
GARAGE: 535 sq. ft, PORCH: 128 sq. ft, DECK: 219 sq. ft,  
FIREPLACE: 9 sq. ft  
WALLS: 267 sq. ft

Floor Plan Created By V1photos.com, Measurements Deamed Highly Reliable But Not Guaranteed.



Disclaimer: Sizes and Dimensions are Approximate, Actual May Vary.



**Steven Schober**  
303-587-9303  
stevie@wealthbyre.com

