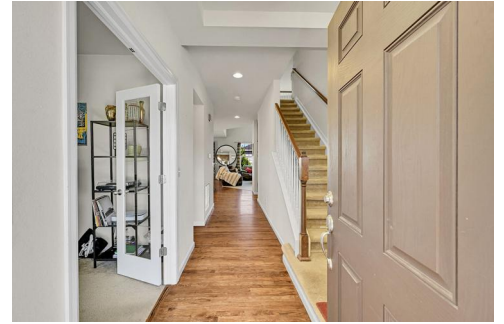




5722 South Flat Rock Way
Aurora, CO 80016
COMMUNITY: Sorrel Ranch

MLS # 1897809
PRICE \$695,000



Single Family



3270 SQFT



5 Beds



2/2 Baths



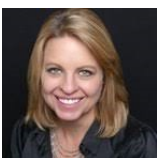
2 Car



0.16 Acre

PROPERTY DETAILS

Welcome to this Energy Star-rated 5-bedroom, 4-bathroom home in Sorrel Ranch, featuring a walk-out basement with ADA-accessible concrete walkway. The main floor offers an office with French doors, an open layout, a large kitchen, and a bright living area with vaulted ceilings. Sliding doors lead to a Trex deck and backyard. Upstairs, find a private primary suite with a 5-piece bath and walk-in closet, plus three more bedrooms, a full bath, and a laundry room. The finished basement includes a recreation room, wet bar, TV area, and a 3/4 bath, with walk-out access to a fenced backyard. The home has two AC units for comfort and a 3-car tandem garage with EV charging. Conveniently located near Southlands Mall and nature trails.



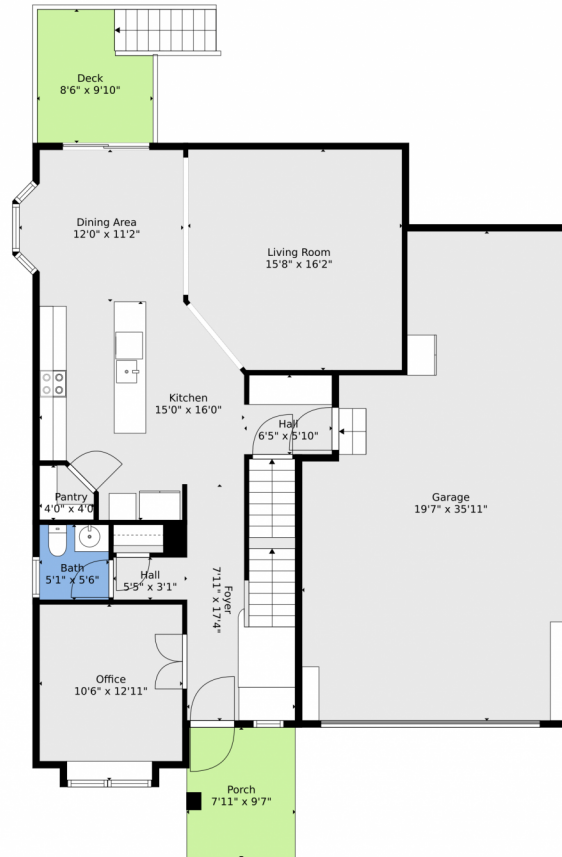
Joan (Joni) Grosjean
303-435-4389
jonigrosjean06@gmail.com



Scan code
for more
property
details



5722 South Flat Rock Way, Aurora, CO 80016 — Main



TOTAL: 2995 sq. ft
BELOW GROUND: 844 sq. ft, FLOOR 2: 978 sq. ft, FLOOR 3: 1173 sq. ft
EXCLUDED AREAS: UNDEFINED: 30 sq. ft, UTILITY: 50 sq. ft, STORAGE: 54 sq. ft,
PATIO: 1143 sq. ft, GARAGE: 603 sq. ft, PORCH: 76 sq. ft,
DECK: 96 sq. ft
WALLS: 283 sq. ft

Floor Plan Created By V1photos.com, Measurements Deamed Highly Reliable But Not Guaranteed.



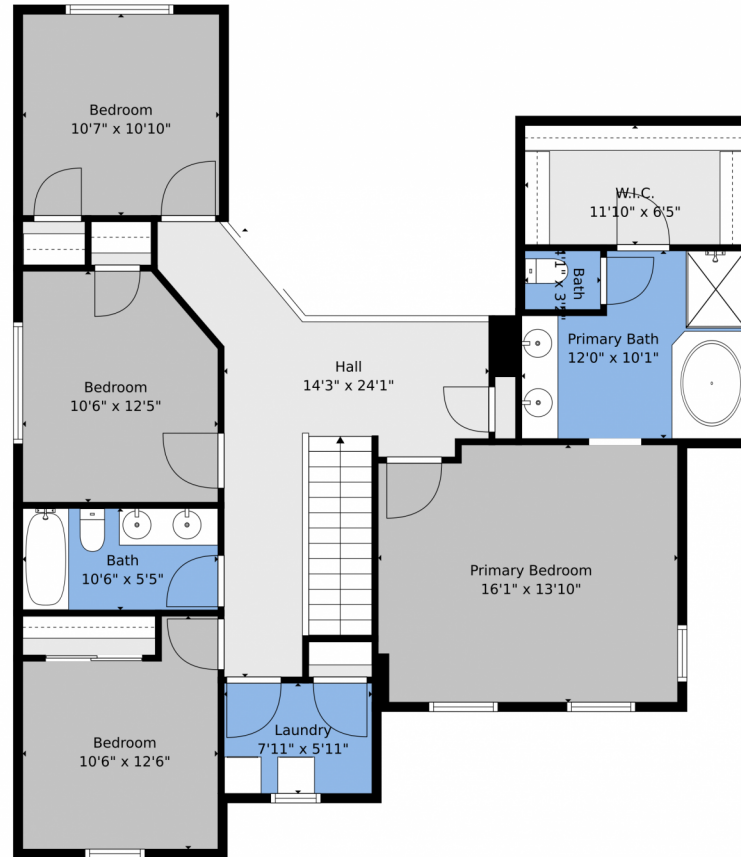
Disclaimer: Sizes and Dimensions are Approximate, Actual May Vary.



Joan (Joni) Grosjean
303-435-4389
jonigrosjean06@gmail.com



5722 South Flat Rock Way, Aurora, CO 80016 — 2nd Level



TOTAL: 2995 sq. ft
BELOW GROUND: 844 sq. ft, FLOOR 2: 978 sq. ft, FLOOR 3: 1173 sq. ft
EXCLUDED AREAS: UNDEFINED: 30 sq. ft, UTILITY: 50 sq. ft, STORAGE: 54 sq. ft,
PATIO: 1143 sq. ft, GARAGE: 603 sq. ft, PORCH: 76 sq. ft,
DECK: 96 sq. ft
WALLS: 283 sq. ft

Floor Plan Created By V1photos.com, Measurements Deamed Highly Reliable But Not Guaranteed.



Disclaimer: Sizes and Dimensions are Approximate, Actual May Vary.



Joan (Joni) Grosjean
303-435-4389
jonigrosjean06@gmail.com



5722 South Flat Rock Way, Aurora, CO 80016 — Basement



TOTAL: 2995 sq. ft
BELOW GROUND: 844 sq. ft, FLOOR 2: 978 sq. ft, FLOOR 3: 1173 sq. ft
EXCLUDED AREAS: UNDEFINED: 30 sq. ft, UTILITY: 50 sq. ft, STORAGE: 54 sq. ft,
PATIO: 1143 sq. ft, GARAGE: 603 sq. ft, PORCH: 76 sq. ft,
DECK: 96 sq. ft
WALLS: 283 sq. ft

Floor Plan Created By V1photos.com, Measurements Deamed Highly Reliable But Not Guaranteed.



Disclaimer: Sizes and Dimensions are Approximate, Actual May Vary.



Joan (Joni) Grosjean
303-435-4389
jonigrosjean06@gmail.com



5722 South Flat Rock Way, Aurora, CO 80016 — All Levels



TOTAL: 2995 sq. ft
BELOW GROUND: 844 sq. ft, FLOOR 2: 978 sq. ft, FLOOR 3: 1173 sq. ft
EXCLUDED AREAS: UNDEFINED: 30 sq. ft, UTILITY: 50 sq. ft, STORAGE: 54 sq. ft,
PATIO: 1143 sq. ft, GARAGE: 603 sq. ft, PORCH: 76 sq. ft,
DECK: 96 sq. ft
WALLS: 283 sq. ft

Floor Plan Created By V1photos.com, Measurements Deamed Highly Reliable But Not Guaranteed.



Disclaimer: Sizes and Dimensions are Approximate, Actual May Vary.



Joan (Joni) Grosjean
303-435-4389
jonigrosjean06@gmail.com



Scan code
for more
property
details

