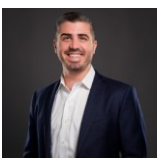


Single Family



2050 SQFT



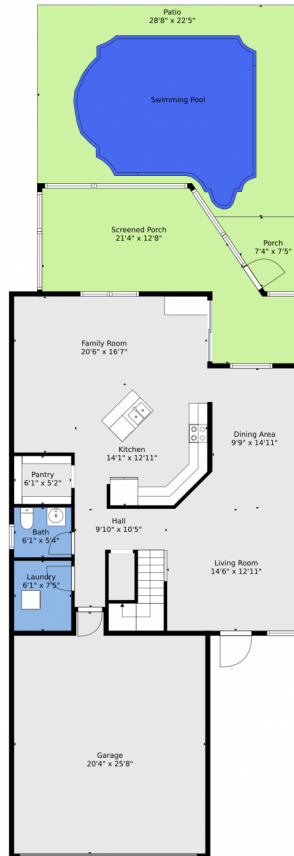
Andy Mandel  
954-610-0563  
andy@mandelteam.com



Scan code  
for more  
property  
details



# 3218 Turtle Cove, West Palm Beach, FL 33411 — floorplan\_single\_0



**TOTAL: 1858 sq. ft**  
FLOOR 1: 1002 sq. ft, FLOOR 2: 856 sq. ft  
EXCLUDED AREAS: GARAGE: 476 sq. ft, SCREENED PORCH: 283 sq. ft, PORCH: 58 sq. ft,  
PATIO: 310 sq. ft  
WALLS: 190 sq. ft

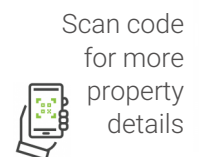
Floor Plan Created By V1photos.com, Measurements Deamed Highly Reliable But Not Guaranteed.

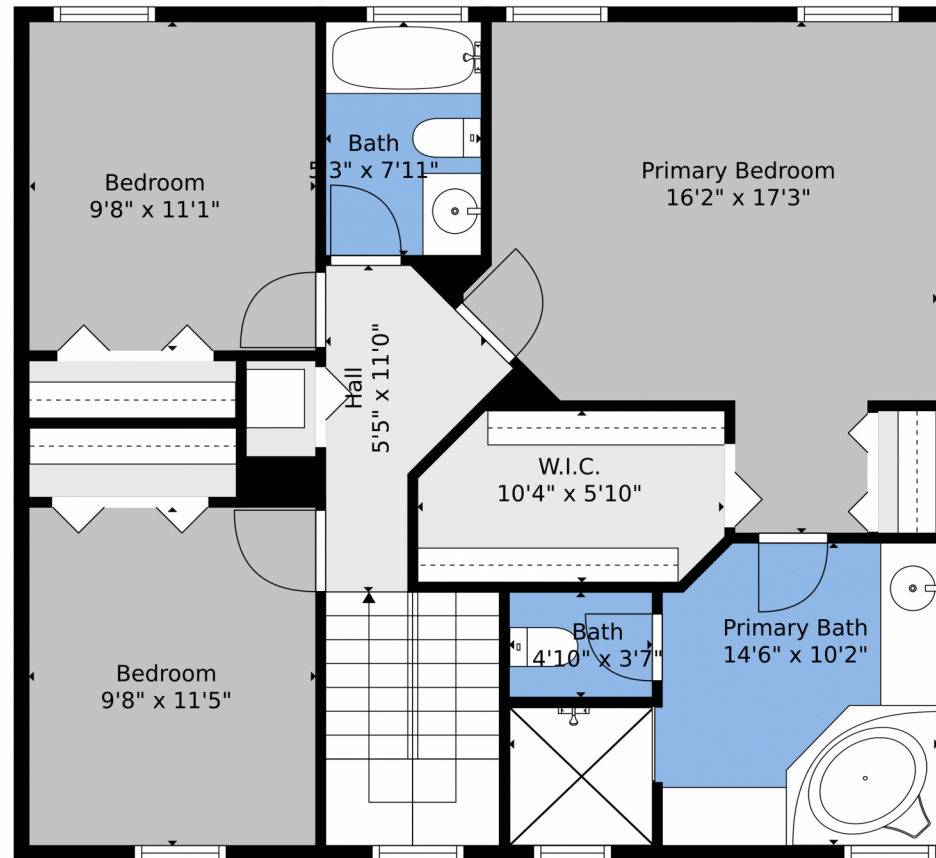


Disclaimer: Sizes and Dimensions are Approximate, Actual May Vary.



**Andy Mandel**  
954-610-0563  
andy@mandelteam.com



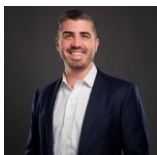


**TOTAL: 1858 sq. ft**  
FLOOR 1: 1002 sq. ft, FLOOR 2: 856 sq. ft  
EXCLUDED AREAS: GARAGE: 476 sq. ft, SCREENED PORCH: 283 sq. ft, PORCH: 58 sq. ft,  
PATIO: 310 sq. ft  
WALLS: 190 sq. ft

Floor Plan Created By V1photos.com, Measurements Deamed Highly Reliable But Not Guaranteed.



Disclaimer: Sizes and Dimensions are Approximate, Actual May Vary.



**Andy Mandel**  
954-610-0563  
andy@mandelteam.com



Scan code  
for more  
property  
details





# 3218 Turtle Cove, West Palm Beach, FL 33411 — floorplan\_all\_0



**TOTAL: 1858 sq. ft**  
FLOOR 1: 1002 sq. ft, FLOOR 2: 856 sq. ft  
EXCLUDED AREAS: GARAGE: 476 sq. ft, SCREENED PORCH: 283 sq. ft, PORCH: 58 sq. ft,  
PATIO: 310 sq. ft  
WALLS: 190 sq. ft

Floor Plan Created By V1photos.com, Measurements Deamed Highly Reliable But Not Guaranteed.



Disclaimer: Sizes and Dimensions are Approximate, Actual May Vary.



**Andy Mandel**  
954-610-0563  
andy@mandelteam.com

