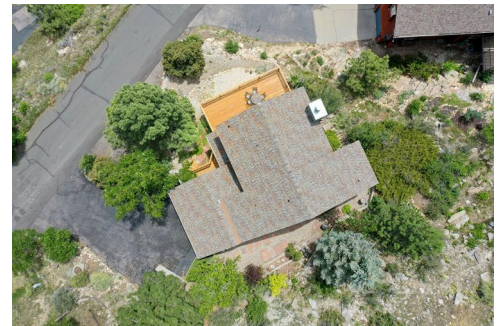




1605 Cliff Side Drive
 Loveland, CO 80538
 COMMUNITY: Namaqua Hills

MLS
 # IR1035532
 PRICE \$775,000



Single Family



1960 SQFT



4 Beds



3/1 Baths



2 Car



0.16 Acre

PROPERTY DETAILS

Discover your dream Colorado retreat in Loveland's serene foothills. This beautifully remodeled 3-bedroom, 4-bathroom home combines mountain charm with modern comfort. Enjoy stunning views of the Rocky Mountains from the spacious new deck, perfect for morning coffee or evening gatherings. Inside, luxury vinyl flooring and designer finishes create an inviting atmosphere. The gourmet kitchen features quartz countertops and stainless steel appliances. Each bedroom offers peaceful views, while the primary suite includes a 5pc ensuite bath. The finished basement is ideal for a media room or gym. Surrounded by nature, this home is just minutes from downtown Loveland's shops and restaurants. With new furnace and water heater, this turnkey property is ready for you, whether as a full-time residence or weekend getaway. Explore the 3D virtual tour on HOMES.com.



Jennifer Hart
 720-935-1137
 hartrealty1@gmail.com



Scan code
 for more
 property
 details

