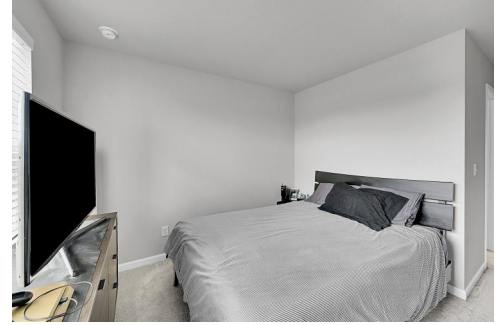
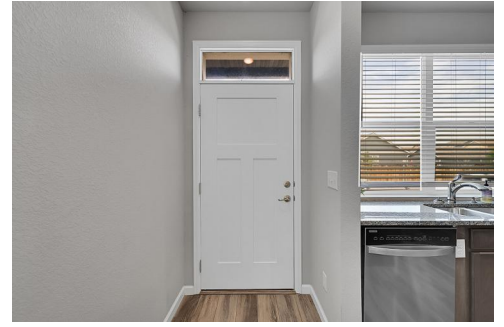




847 Great Plains Avenue
Berthoud, CO 80513
COMMUNITY: Prairie Star



Townhouse



1320 SQFT



3 Beds



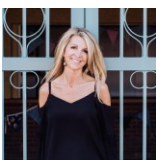
2/1 Baths



1 Car



0.04 Acre

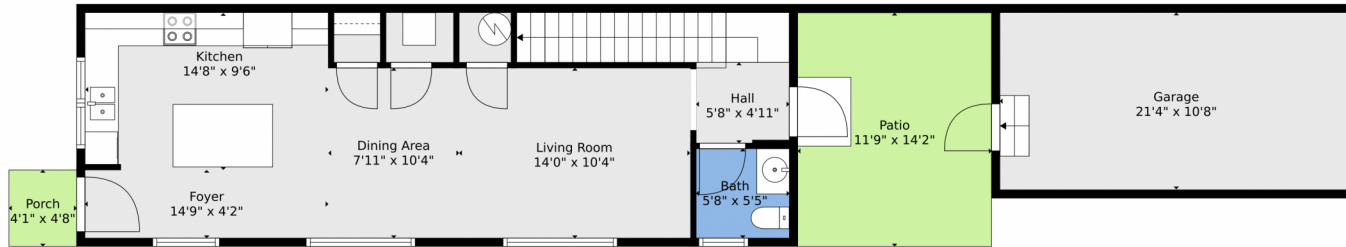


Christy Hepp
303-910-5393
cnishi1068@msn.com
<https://christysellscolorado.com>



Scan code
for more
property
details





TOTAL: 1173 sq. ft
FLOOR 1: 559 sq. ft, FLOOR 2: 614 sq. ft
EXCLUDED AREAS: PORCH: 19 sq. ft, PATIO: 166 sq. ft, GARAGE: 229 sq. ft,
UNDEFINED: 22 sq. ft
WALLS: 156 sq. ft

Floor Plan Created By V1photos.com. Measurements Deamed Highly Reliable But Not Guaranteed.



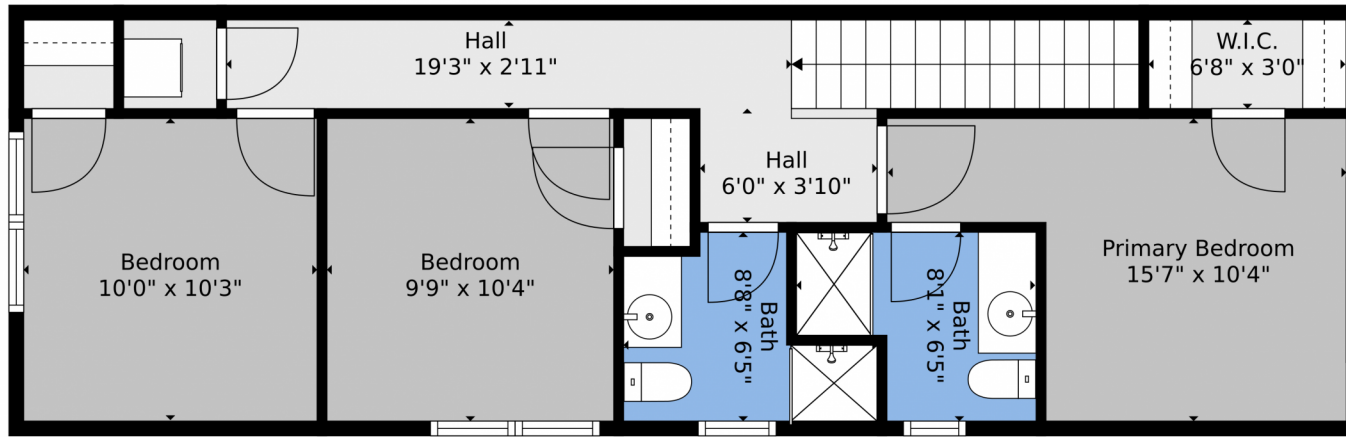
Disclaimer: Sizes and Dimensions are Approximate, Actual May Vary.



Christy Hepp
303-910-5393
cnishi1068@msn.com
<https://christysellscolorado.com>



847 Great Plains Avenue, Berthoud, CO 80513 – 2nd Level



TOTAL: 1173 sq. ft
FLOOR 1: 559 sq. ft, FLOOR 2: 614 sq. ft
EXCLUDED AREAS: PORCH: 19 sq. ft, PATIO: 166 sq. ft, GARAGE: 229 sq. ft,
UNDEFINED: 22 sq. ft
WALLS: 156 sq. ft

Floor Plan Created By V1photos.com, Measurements Deamed Highly Reliable But Not Guaranteed.



Disclaimer: Sizes and Dimensions are Approximate, Actual May Vary.



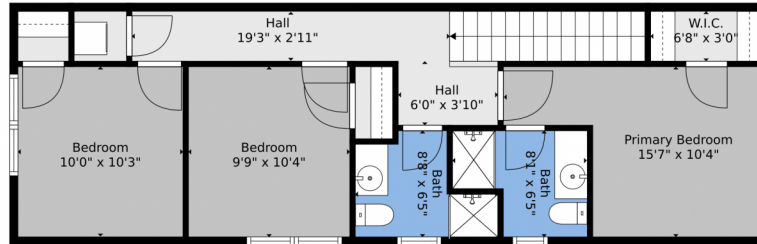
Christy Hepp
303-910-5393
cnishi1068@msn.com
<https://christysellscolorado.com>



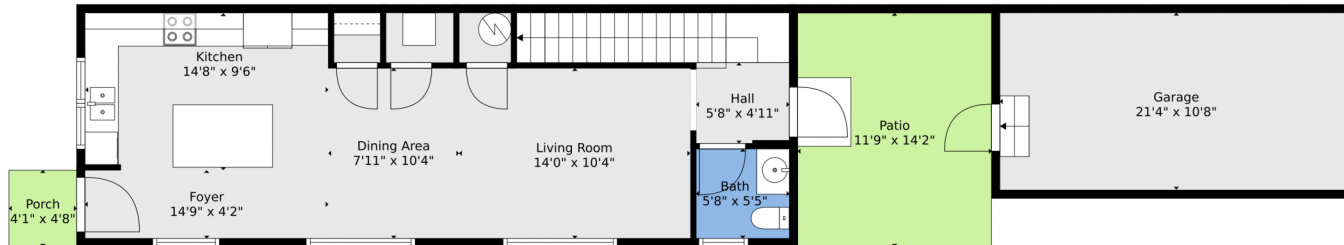
Scan code
for more
property
details



847 Great Plains Avenue, Berthoud, CO 80513 – All Levels



Floor 2



Floor 1

TOTAL: 1173 sq. ft
FLOOR 1: 559 sq. ft, FLOOR 2: 614 sq. ft
EXCLUDED AREAS: PORCH: 19 sq. ft, PATIO: 166 sq. ft, GARAGE: 229 sq. ft,
UNDEFINED: 22 sq. ft
WALLS: 156 sq. ft

Floor Plan Created By V1photos.com, Measurements Deamed Highly Reliable But Not Guaranteed.



Disclaimer: Sizes and Dimensions are Approximate, Actual May Vary.



Christy Hepp
303-910-5393
cnishi1068@msn.com
<https://christysellscolorado.com>



Scan code
for more
property
details