



6350 North Lisbon Street  
Aurora, CO 80019  
COMMUNITY: Painted Prairie



Townhouse



1428 SQFT



3 Beds



2/1 Baths



2 Car



0.05 Acre



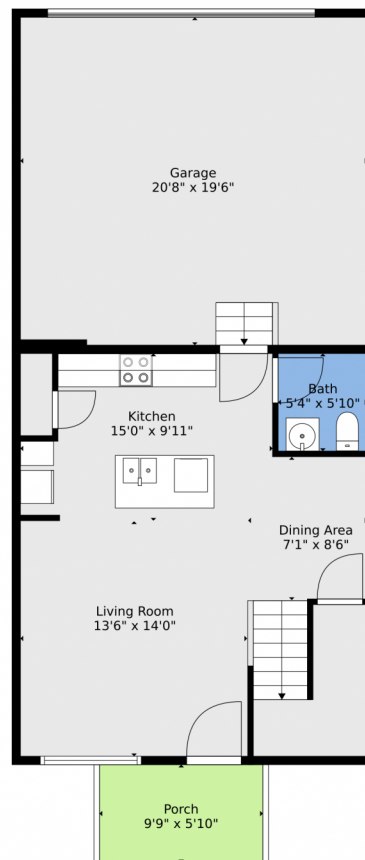
Steven Pilkington  
303-587-0402  
steven@pathhometeam.com



Scan code  
for more  
property  
details



## 6350 North Lisbon Street, Aurora, CO 80019 — Main



**TOTAL: 1400 sq. ft**  
FLOOR 1: 494 sq. ft, FLOOR 2: 906 sq. ft  
EXCLUDED AREAS: GARAGE: 402 sq. ft, PORCH: 56 sq. ft  
WALLS: 142 sq. ft

Floor Plan Created By V1photos.com, Measurements Deamed Highly Reliable But Not Guaranteed.



Disclaimer: Sizes and Dimensions are Approximate, Actual May Vary.



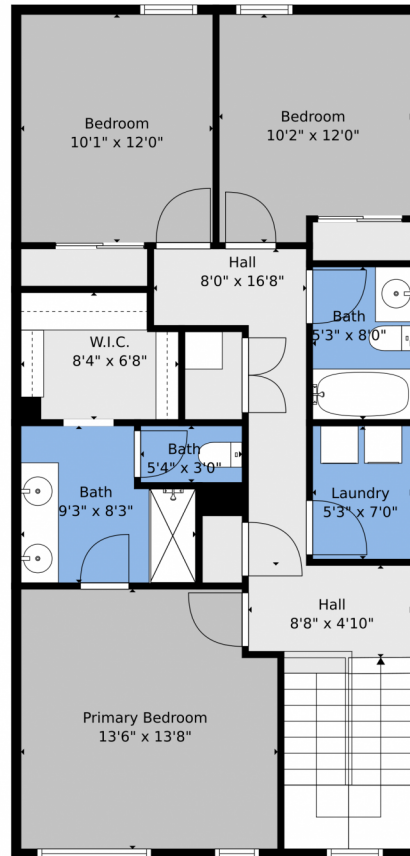
**Steven Pilkington**  
303-587-0402  
steven@pathhometeam.com



Scan code  
for more  
property  
details



## 6350 North Lisbon Street, Aurora, CO 80019 — 2nd Level



**TOTAL: 1400 sq. ft**  
FLOOR 1: 494 sq. ft, FLOOR 2: 906 sq. ft  
EXCLUDED AREAS: GARAGE: 402 sq. ft, PORCH: 56 sq. ft  
WALLS: 142 sq. ft

Floor Plan Created By V1photos.com, Measurements Deamed Highly Reliable But Not Guaranteed.



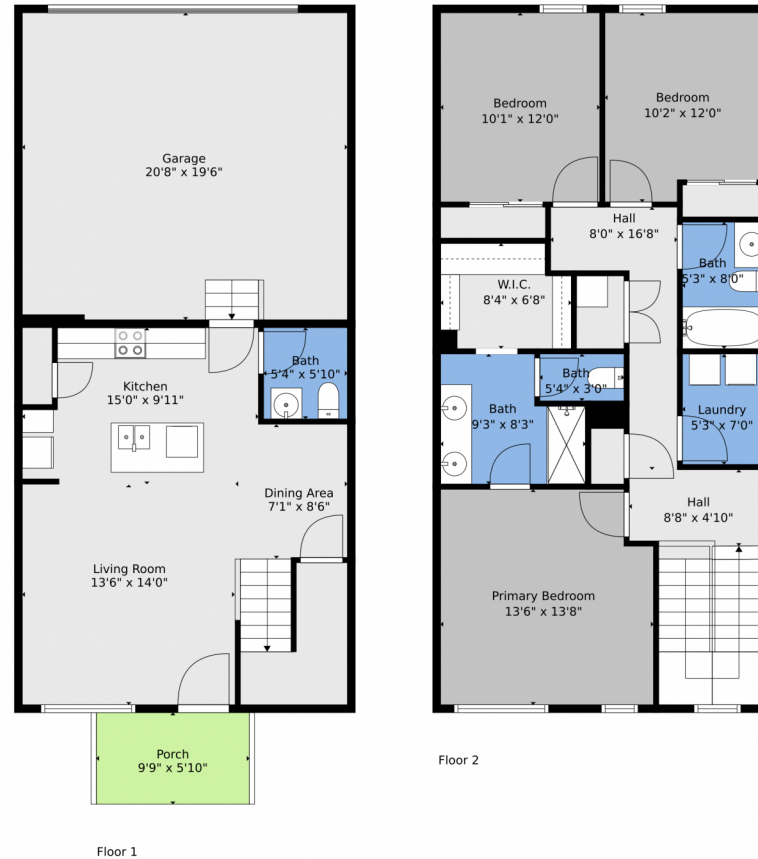
Disclaimer: Sizes and Dimensions are Approximate, Actual May Vary.



**Steven Pilkington**  
303-587-0402  
steven@pathhometeam.com



# 6350 North Lisbon Street, Aurora, CO 80019 — All Levels



**TOTAL: 1400 sq. ft**  
FLOOR 1: 494 sq. ft, FLOOR 2: 906 sq. ft  
EXCLUDED AREAS: GARAGE: 402 sq. ft, PORCH: 56 sq. ft  
WALLS: 142 sq. ft

Floor Plan Created By V1photos.com, Measurements Deamed Highly Reliable But Not Guaranteed.



Disclaimer: Sizes and Dimensions are Approximate, Actual May Vary.



**Steven Pilkington**  
303-587-0402  
steven@pathhometeam.com

