



Single Family



1944 SQFT



3 Beds



2 Baths



2 Car



1 Acre

PROPERTY DETAILS

This charming home offers stunning mountain views in a peaceful, treehouse-like setting. With two spacious decks and large windows, it's a perfect retreat. The main living area is just a step up from the oversized 2-car garage. Rebuilt in 2003 from the studs in, it features new windows, siding, roof, and more. The lightly used home has been meticulously maintained. The kitchen boasts granite counters and maple cabinets, opening to a dining area with great views. The living room is large with a cozy wood-burning fireplace. The primary bedroom has double closets and access to the large lower deck. The lower-level den serves as a cozy retreat or office. The 1+ acre lot enjoys abundant sunshine and wildlife visits. The garage includes a workbench and sink, plus a storage shed. A new furnace and hot water heater ensure worry-free living. Located just 2.6 miles from national forest and trails, and minutes from Evergreen amenities.



Pandora & John Erlandson

303-888-6298

pandora@pandorajohnproperties.com

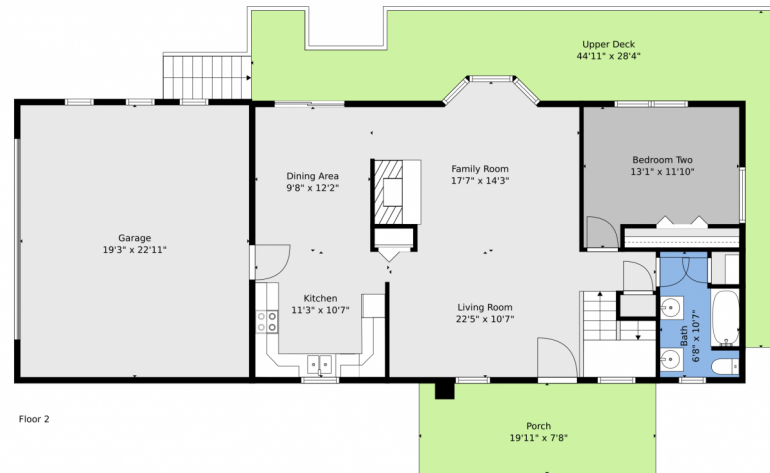
<https://www.pandorajohnproperties.com>



Scan code
for more
property
details



360 Aspen Place, Evergreen, CO 80439 — All Levels



TOTAL: 1824 sq. ft
BELOW GROUND: 886 sq. ft, FLOOR 2: 938 sq. ft
EXCLUDED AREAS: LOWER DECK: 422 sq. ft, GARAGE: 441 sq. ft, PORCH: 152 sq. ft,
UPPER DECK: 401 sq. ft
WALLS: 160 sq. ft

Floor Plan Created By V1photos.com, Measurements Deamed Highly Reliable But Not Guaranteed.



Disclaimer: Sizes and Dimensions are Approximate, Actual May Vary.



Pandora & John Erlandson
303-888-6298
pandora@pandorajohnproperties.com
<https://www.pandorajohnproperties.com>

