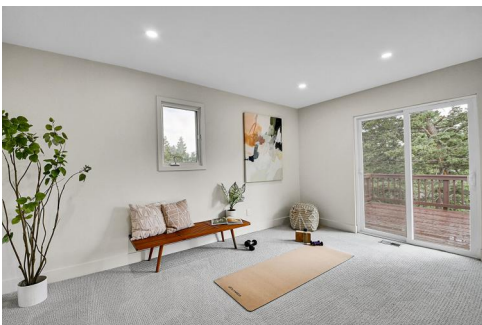




8919 South Hillview Road
Morrison, CO 80465



 Single Family

 2379 SQFT

 4 Beds

 2/1 Baths

 2 Car

 5 Acre

Peter Pasque
303-618-7882
prpasque@gmail.com





TOTAL: 2593 sq. ft
FLOOR 1: 1290 sq. ft, FLOOR 2: 1303 sq. ft
EXCLUDED AREAS: UTILITY: 23 sq. ft, PORCH: 112 sq. ft, PATIO: 322 sq. ft,
GARAGE: 577 sq. ft, FIREPLACE: 7 sq. ft, BALCONY: 242 sq. ft,
BAY WINDOW: 14 sq. ft
WALLS: 194 sq. ft

Floor Plan Created By V1photos.com, Measurements Deamed Highly Reliable But Not Guaranteed.



Disclaimer: Sizes and Dimensions are Approximate, Actual May Vary.

Peter Pasque
303-618-7882
prpasque@gmail.com

Scan code
for more
property
details



8919 South Hillview Road, Morrison, CO 80465 – 2nd Level



TOTAL: 2593 sq. ft
FLOOR 1: 1290 sq. ft, FLOOR 2: 1303 sq. ft
EXCLUDED AREAS: UTILITY: 23 sq. ft, PORCH: 112 sq. ft, PATIO: 322 sq. ft,
GARAGE: 577 sq. ft, FIREPLACE: 7 sq. ft, BALCONY: 242 sq. ft,
BAY WINDOW: 14 sq. ft
WALLS: 194 sq. ft

Floor Plan Created By V1photos.com, Measurements Deamed Highly Reliable But Not Guaranteed.



Disclaimer: Sizes and Dimensions are Approximate, Actual May Vary.

Peter Pasque
303-618-7882
prpasque@gmail.com

Scan code
for more
property
details



8919 South Hillview Road, Morrison, CO 80465 – All Levels



TOTAL: 2593 sq. ft
FLOOR 1: 1290 sq. ft, FLOOR 2: 1303 sq. ft
EXCLUDED AREAS: UTILITY: 23 sq. ft, PORCH: 112 sq. ft, PATIO: 322 sq. ft,
GARAGE: 577 sq. ft, FIREPLACE: 7 sq. ft, BALCONY: 242 sq. ft,
BAY WINDOW: 14 sq. ft
WALLS: 194 sq. ft

Floor Plan Created By V1photos.com, Measurements Deamed Highly Reliable But Not Guaranteed.



Disclaimer: Sizes and Dimensions are Approximate, Actual May Vary.

Peter Pasque
303-618-7882
prpasque@gmail.com

Scan code
for more
property
details

