



164 Canon View Road
Boulder, CO 80302
COMMUNITY: Boulder Heights



Single Family



3793 SQFT



4 Beds



3/1 Baths



3 Car



1.62 Acre



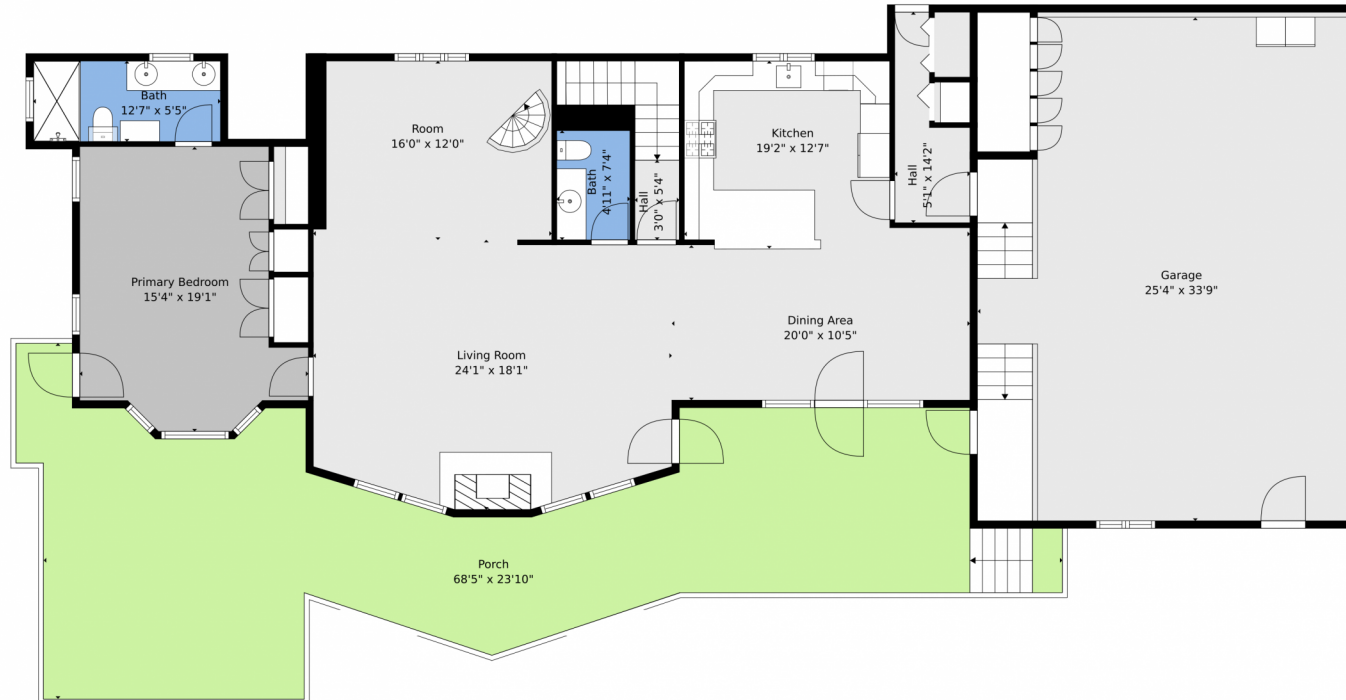
Michael Ackerman
303-588-7560
mackerman@creasset.com



Scan code
for more
property
details



164 Canon View Road, Boulder, CO 80302 — Main



TOTAL: 2693 sq. ft
BELOW GROUND: 1170 sq. ft, FLOOR 2: 1523 sq. ft
EXCLUDED AREAS: DECK: 301 sq. ft, GARAGE: 827 sq. ft, UNDEFINED: 33 sq. ft,
PORCH: 831 sq. ft
WALLS: 236 sq. ft

Floor Plan Created By V1photos.com, Measurements Deamed Highly Reliable But Not Guaranteed.



Disclaimer: Sizes and Dimensions are Approximate, Actual May Vary.



Michael Ackerman
303-588-7560
mackerman@creasset.com



164 Canon View Road, Boulder, CO 80302 — Lower Level



TOTAL: 2693 sq. ft
BELOW GROUND: 1170 sq. ft, FLOOR 2: 1523 sq. ft
EXCLUDED AREAS: DECK: 301 sq. ft, GARAGE: 827 sq. ft, UNDEFINED: 33 sq. ft,
PORCH: 831 sq. ft
WALLS: 236 sq. ft

Floor Plan Created By V1photos.com, Measurements Deamed Highly Reliable But Not Guaranteed.



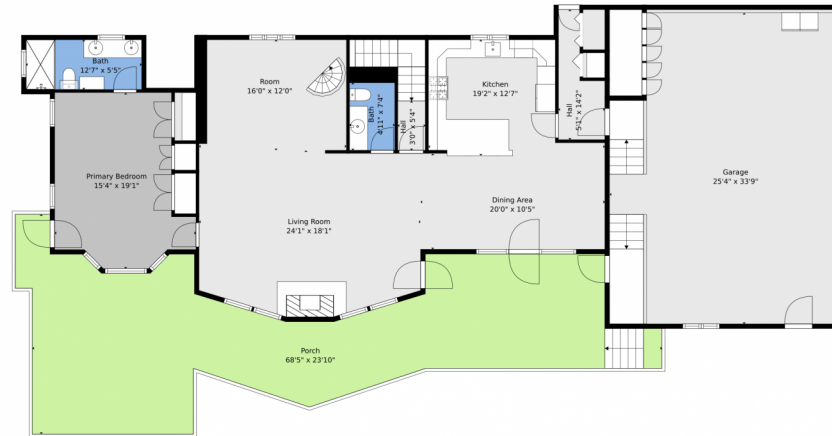
Disclaimer: Sizes and Dimensions are Approximate, Actual May Vary.



Michael Ackerman
303-588-7560
mackerman@creasset.com



164 Canon View Road, Boulder, CO 80302 — All Levels



Floor 2



Floor 1

TOTAL: 2693 sq. ft
BELOW GROUND: 1170 sq. ft, FLOOR 2: 1523 sq. ft
EXCLUDED AREAS: DECK: 301 sq. ft, GARAGE: 827 sq. ft, UNDEFINED: 33 sq. ft,
PORCH: 831 sq. ft
WALLS: 236 sq. ft

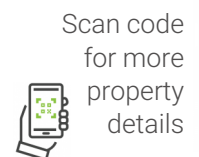
Floor Plan Created By V1photos.com, Measurements Deamed Highly Reliable But Not Guaranteed.



Disclaimer: Sizes and Dimensions are Approximate, Actual May Vary.



Michael Ackerman
303-588-7560
mackerman@creasset.com



Scan code
for more
property
details

