



Single Family



3100 SQFT



3 Beds



2/1 Baths



Taylor Haas

303-665-7368

taylorh@coloradorpm.com

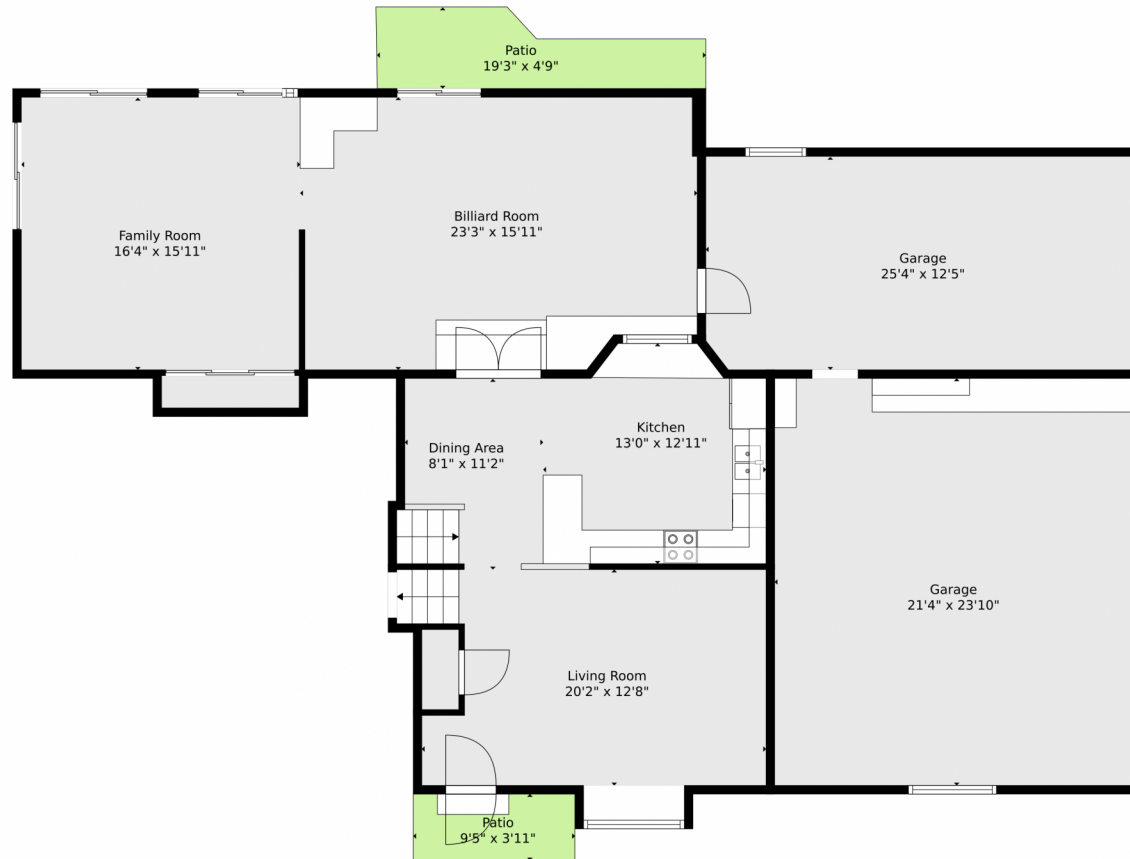
<https://www.coloradorpm.com/available-rental-properties-denver>



Scan code
for more
property
details



7579 West Portland Avenue, Littleton, CO 80128 — Main



TOTAL: 2633 sq. ft
BELOW GROUND: 356 sq. ft, FLOOR 2: 537 sq. ft, FLOOR 3: 1156 sq. ft, FLOOR 4: 584 sq. ft
EXCLUDED AREAS: UTILITY: 71 sq. ft, FIREPLACE: 9 sq. ft, GARAGE: 822 sq. ft,
PATIO: 109 sq. ft, BAY WINDOW: 14 sq. ft
WALLS: 267 sq. ft

Floor Plan Created By V1photos.com, Measurements Deamed Highly Reliable But Not Guaranteed.



Disclaimer: Sizes and Dimensions are Approximate, Actual May Vary.



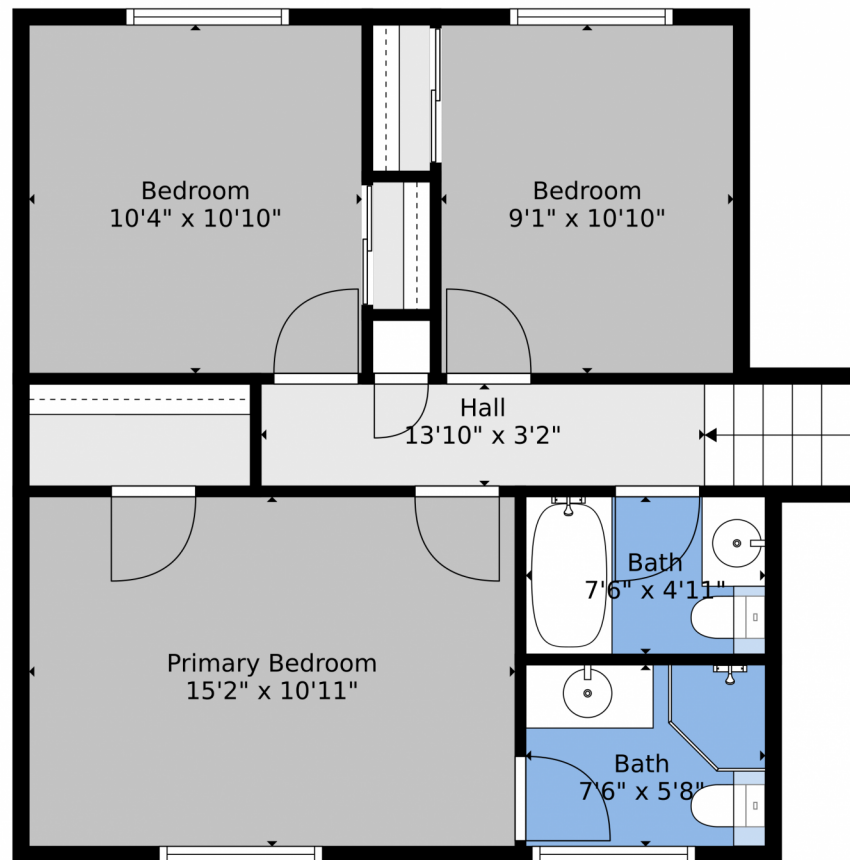
Taylor Haas
303-665-7368
taylorh@coloradorpm.com
<https://www.coloradorpm.com/available-rental-properties-denver>



Scan code
for more
property
details



7579 West Portland Avenue, Littleton, CO 80128 – 2nd Level



TOTAL: 2633 sq. ft
BELOW GROUND: 356 sq. ft, FLOOR 2: 537 sq. ft, FLOOR 3: 1156 sq. ft, FLOOR 4: 584 sq. ft
EXCLUDED AREAS: UTILITY: 71 sq. ft, FIREPLACE: 9 sq. ft, GARAGE: 822 sq. ft,
PATIO: 109 sq. ft, BAY WINDOW: 14 sq. ft
WALLS: 267 sq. ft

Floor Plan Created By V1photos.com, Measurements Deamed Highly Reliable But Not Guaranteed.



Disclaimer: Sizes and Dimensions are Approximate, Actual May Vary.



Taylor Haas
303-665-7368
taylorh@coloradorm.com
<https://www.coloradorm.com/available-rental-properties-denver>



Scan code
for more
property
details



7579 West Portland Avenue, Littleton, CO 80128 — Lower Level



TOTAL: 2633 sq. ft
BELOW GROUND: 356 sq. ft, FLOOR 2: 537 sq. ft, FLOOR 3: 1156 sq. ft, FLOOR 4: 584 sq. ft
EXCLUDED AREAS: UTILITY: 71 sq. ft, FIREPLACE: 9 sq. ft, GARAGE: 822 sq. ft,
PATIO: 109 sq. ft, BAY WINDOW: 14 sq. ft
WALLS: 267 sq. ft

Floor Plan Created By V1photos.com, Measurements Deamed Highly Reliable But Not Guaranteed.



Disclaimer: Sizes and Dimensions are Approximate, Actual May Vary.



Taylor Haas

303-665-7368

taylorh@coloradorpm.com

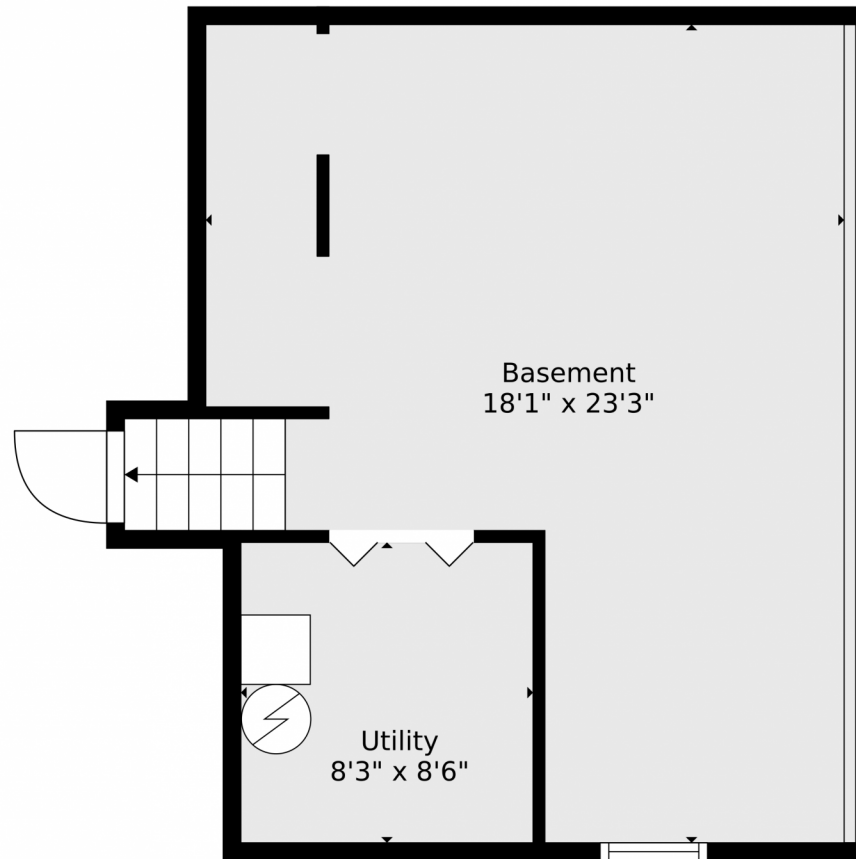
<https://www.coloradorpm.com/available-rental-properties-denver>



Scan code
for more
property
details



7579 West Portland Avenue, Littleton, CO 80128 — Basement



TOTAL: 2633 sq. ft
BELOW GROUND: 356 sq. ft, FLOOR 2: 537 sq. ft, FLOOR 3: 1156 sq. ft, FLOOR 4: 584 sq. ft
EXCLUDED AREAS: UTILITY: 71 sq. ft, FIREPLACE: 9 sq. ft, GARAGE: 822 sq. ft,
PATIO: 109 sq. ft, BAY WINDOW: 14 sq. ft
WALLS: 267 sq. ft

Floor Plan Created By V1photos.com, Measurements Deamed Highly Reliable But Not Guaranteed.



Disclaimer: Sizes and Dimensions are Approximate, Actual May Vary.



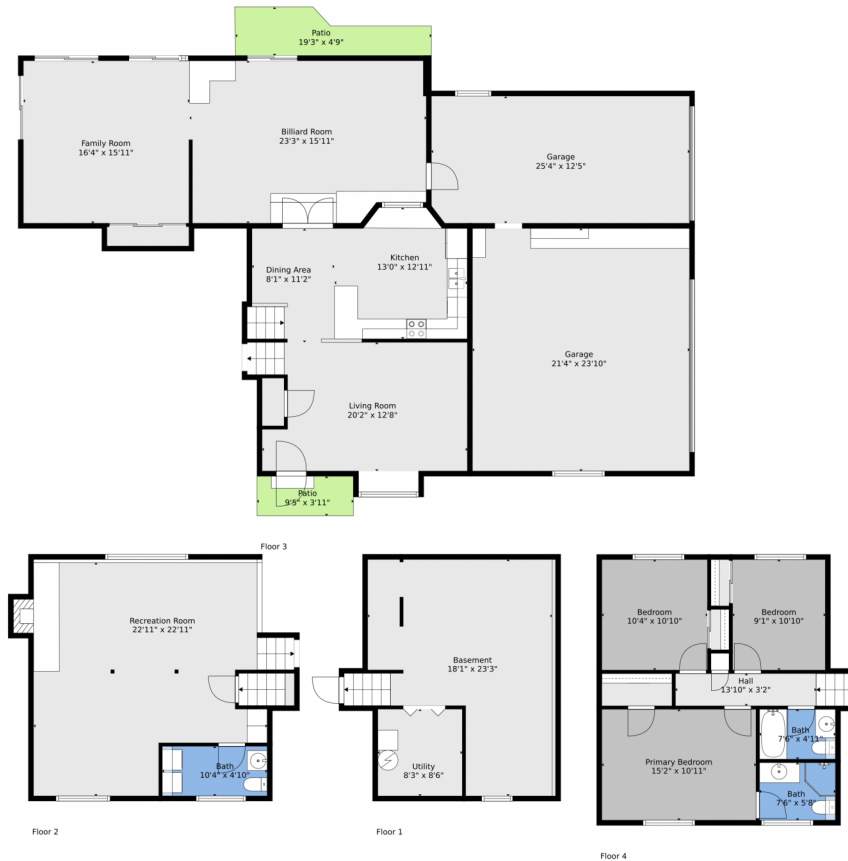
Taylor Haas
303-665-7368
taylorh@coloradorpm.com
<https://www.coloradorpm.com/available-rental-properties-denver>



Scan code
for more
property
details



7579 West Portland Avenue, Littleton, CO 80128 — All Levels



TOTAL: 2633 sq. ft
BELOW GROUND: 356 sq. ft, FLOOR 2: 537 sq. ft, FLOOR 3: 1156 sq. ft, FLOOR 4: 584 sq. ft
EXCLUDED AREAS: UTILITY: 71 sq. ft, FIREPLACE: 9 sq. ft, GARAGE: 822 sq. ft,
PATIO: 109 sq. ft, BAY WINDOW: 14 sq. ft
WALLS: 267 sq. ft

Floor Plan Created By V1photos.com, Measurements Deamed Highly Reliable But Not Guaranteed.



Disclaimer: Sizes and Dimensions are Approximate, Actual May Vary.



Taylor Haas

303-665-7368

taylorh@coloradorpm.com

<https://www.coloradorpm.com/available-rental-properties-denver>



Scan code
for more
property
details

