




 Single Family

 1644 SQFT

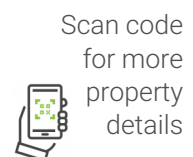
 4 Beds

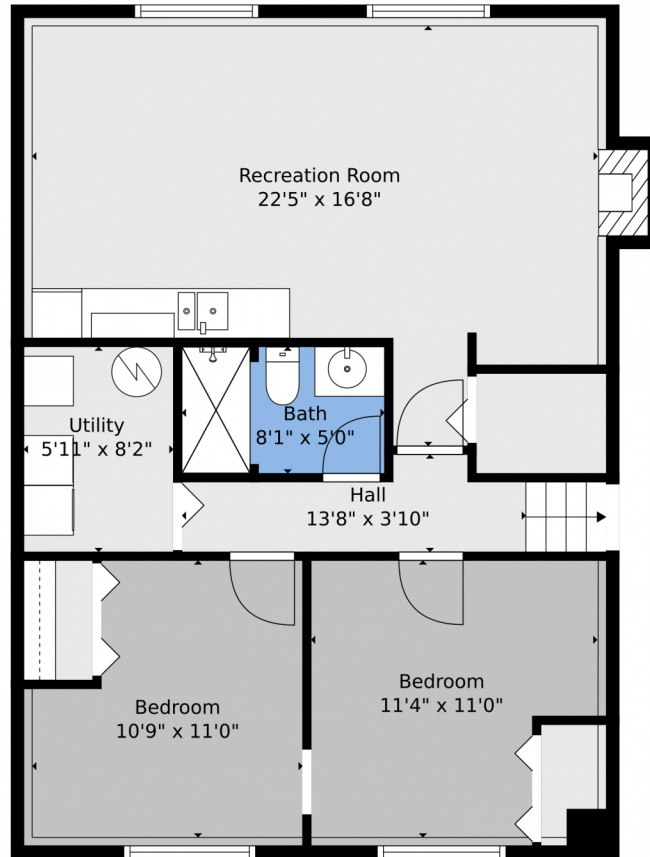
 2 Baths

 2 Car



**Taylor Haas**  
303-665-7368  
taylorh@coloradorpm.com  
<https://www.coloradorpm.com/available-rental-properties-denver>





**TOTAL: 1644 sq. ft**  
BELOW GROUND: 713 sq. ft, FLOOR 2: 931 sq. ft  
EXCLUDED AREAS: UTILITY: 48 sq. ft, FIREPLACE: 7 sq. ft, GARAGE: 399 sq. ft,  
DECK: 233 sq. ft  
WALLS: 151 sq. ft

Floor Plan Created By V1photos.com, Measurements Deamed Highly Reliable But Not Guaranteed.



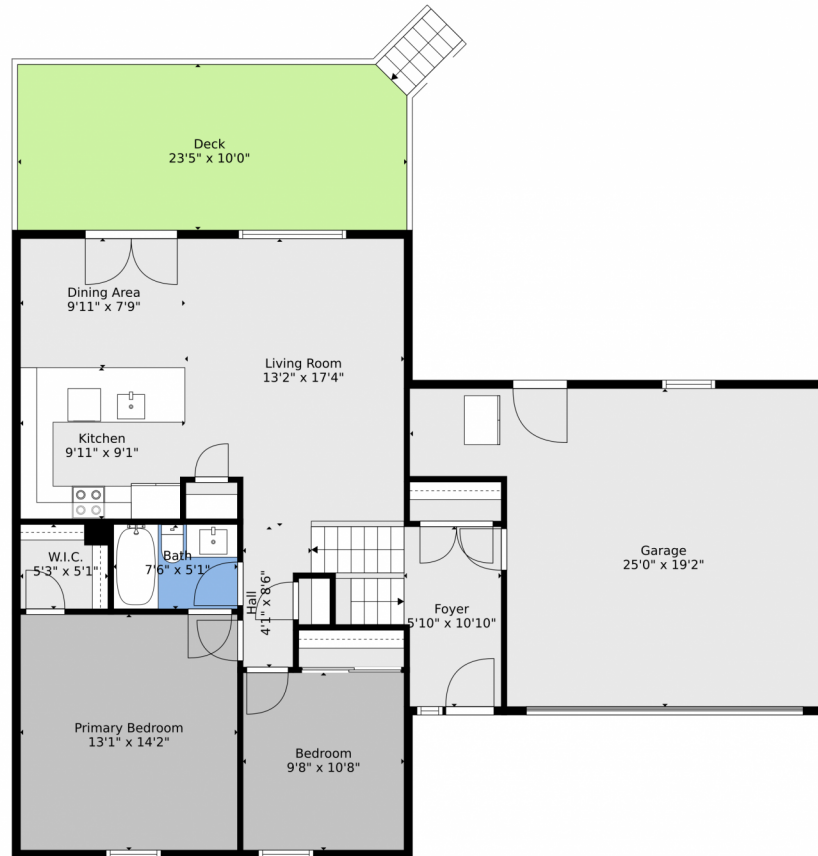
Disclaimer: Sizes and Dimensions are Approximate, Actual May Vary.



**Taylor Haas**  
303-665-7368  
taylorh@coloradorm.com  
<https://www.coloradorm.com/available-rental-properties-denver>



# 329 Mulberry Circle, Broomfield, CO 80020 — floorplan\_single\_1



**TOTAL: 1644 sq. ft**  
BELOW GROUND: 713 sq. ft, FLOOR 2: 931 sq. ft  
EXCLUDED AREAS: UTILITY: 48 sq. ft, FIREPLACE: 7 sq. ft, GARAGE: 399 sq. ft,  
DECK: 233 sq. ft  
WALLS: 151 sq. ft

Floor Plan Created By V1photos.com, Measurements Deamed Highly Reliable But Not Guaranteed.

Disclaimer: Sizes and Dimensions are Approximate, Actual May Vary.



**Taylor Haas**

303-665-7368

taylorh@coloradorpm.com

<https://www.coloradorpm.com/available-rental-properties-denver>



Scan code  
for more  
property  
details



# 329 Mulberry Circle, Broomfield, CO 80020 — floorplan\_all\_0



**TOTAL: 1644 sq. ft**  
BELOW GROUND: 713 sq. ft, FLOOR 2: 931 sq. ft  
EXCLUDED AREAS: UTILITY: 48 sq. ft, FIREPLACE: 7 sq. ft, GARAGE: 399 sq. ft,  
DECK: 233 sq. ft  
WALLS: 151 sq. ft

Floor Plan Created By V1photos.com, Measurements Deamed Highly Reliable But Not Guaranteed.



Disclaimer: Sizes and Dimensions are Approximate, Actual May Vary.



**Taylor Haas**

303-665-7368

taylorh@coloradorpm.com

<https://www.coloradorpm.com/available-rental-properties-denver>



Scan code  
for more  
property  
details

