

Single Family



3154 SQFT



4 Beds



3/1 Baths



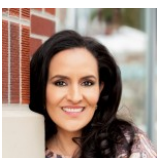
2 Car



0.15 Acre

PROPERTY DETAILS

Adonea boasts an excellent living location with a contemporary floorplan and handcrafted details. The home features a multi-textured exterior, a welcoming front porch, and 5' privacy fencing. A stunning open wrought iron staircase is a focal point. The kitchen is equipped with an oversized pantry, double oven, gas cooktop, and stainless-steel appliances. The spacious dining and great room area allows for easy backyard access. The backyard oasis includes a Koi pond, gazebo, and chiminea. Upstairs, the primary bedroom has a walk-in closet and an oversized shower with a double vanity. Two additional bedrooms share a bath, and the laundry room is conveniently located. The finished basement includes a fourth bedroom, a three-quarter shower, and a large media room.



Lillian Colbert
303-549-7907
lilliancolbert@comcast.net



Scan code
for more
property
details

