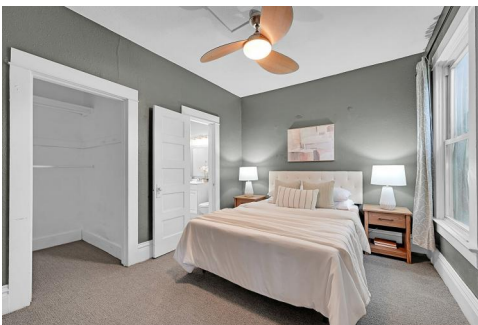


1005 South Pennsylvania Street  
Denver, CO 80209



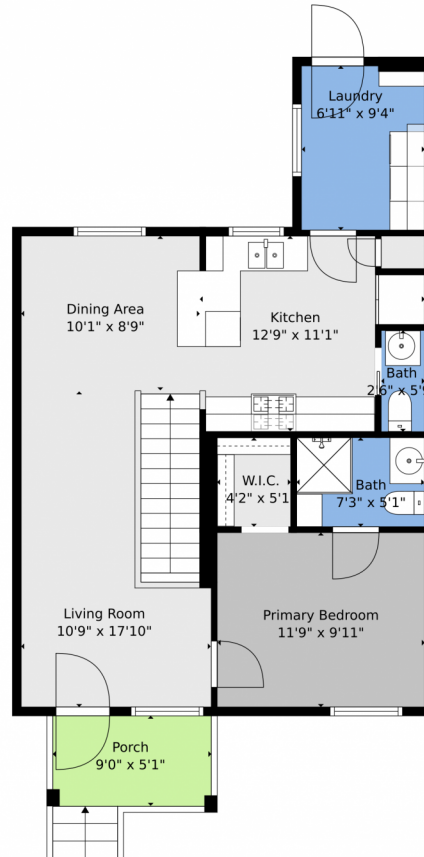
 Townhouse  1400 SQFT



**Will Story**  
720-075-7227  
Will@StoryHomeGroup.com



# 1005 South Pennsylvania Street, Denver, CO 80209 — Main



**TOTAL: 1074 sq. ft**  
BELOW GROUND: 397 sq. ft, FLOOR 2: 677 sq. ft  
EXCLUDED AREAS: UTILITY: 78 sq. ft, PATIO: 33 sq. ft, PORCH: 57 sq. ft  
WALLS: 120 sq. ft

Floor Plan Created By V1photos.com, Measurements Deamed Highly Reliable But Not Guaranteed.



Disclaimer: Sizes and Dimensions are Approximate, Actual May Vary.



**Will Story**  
720-075-7227  
Will@StoryHomeGroup.com



## 1005 South Pennsylvania Street, Denver, CO 80209 — Basement



**TOTAL: 1074 sq. ft**  
BELOW GROUND: 397 sq. ft, FLOOR 2: 677 sq. ft  
EXCLUDED AREAS: UTILITY: 78 sq. ft, PATIO: 33 sq. ft, PORCH: 57 sq. ft  
WALLS: 120 sq. ft

Floor Plan Created By V1photos.com, Measurements Deamed Highly Reliable But Not Guaranteed.



Disclaimer: Sizes and Dimensions are Approximate, Actual May Vary.



**Will Story**  
720-075-7227  
Will@StoryHomeGroup.com





# 1005 South Pennsylvania Street, Denver, CO 80209 — All Levels



**TOTAL: 1074 sq. ft**  
BELOW GROUND: 397 sq. ft, FLOOR 2: 677 sq. ft  
EXCLUDED AREAS: UTILITY: 78 sq. ft, PATIO: 33 sq. ft, PORCH: 57 sq. ft  
WALLS: 120 sq. ft

Floor Plan Created By V1photos.com, Measurements Deamed Highly Reliable But Not Guaranteed.



Disclaimer: Sizes and Dimensions are Approximate, Actual May Vary.



**Will Story**  
720-075-7227  
Will@StoryHomeGroup.com



Scan code  
for more  
property  
details

