



Single Family



2842 SQFT



4 Beds



3/1 Baths



3 Car



1.7 Acre

## PROPERTY DETAILS

Discover Your Dream Home



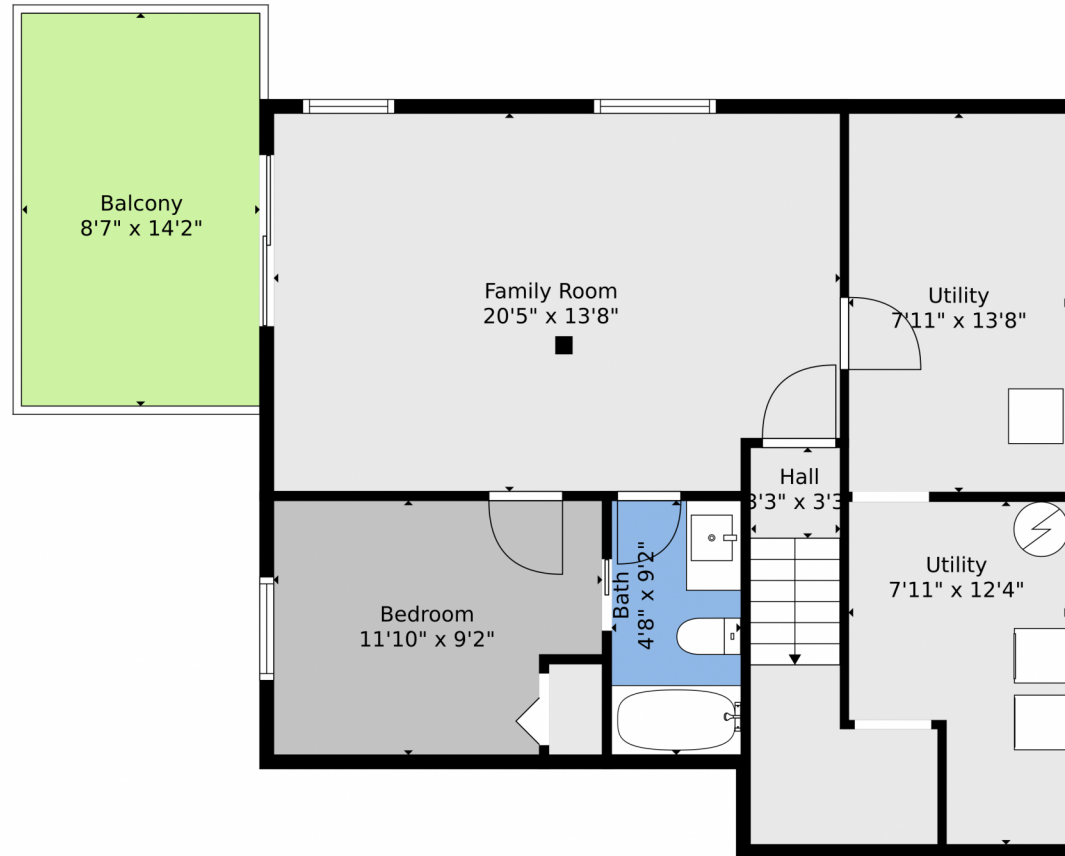
**Dana Bossert**  
720-989-1244  
dana@tuppersteam.com



Scan code  
for more  
property  
details



## 4011 S Skyline Drive, Evergreen, CO 80439 – Lower Level



**TOTAL: 2380 sq. ft**  
BELOW GROUND: 506 sq. ft, FLOOR 2: 787 sq. ft, FLOOR 3: 1087 sq. ft  
EXCLUDED AREAS: UTILITY: 193 sq. ft, BALCONY: 338 sq. ft, GARAGE: 695 sq. ft,  
PORCH: 256 sq. ft, DECK: 565 sq. ft, FIREPLACE: 13 sq. ft,  
OPEN TO BELOW: 264 sq. ft  
WALLS: 267 sq. ft

Floor Plan Created By V1photos.com, Measurements Deamed Highly Reliable But Not Guaranteed.



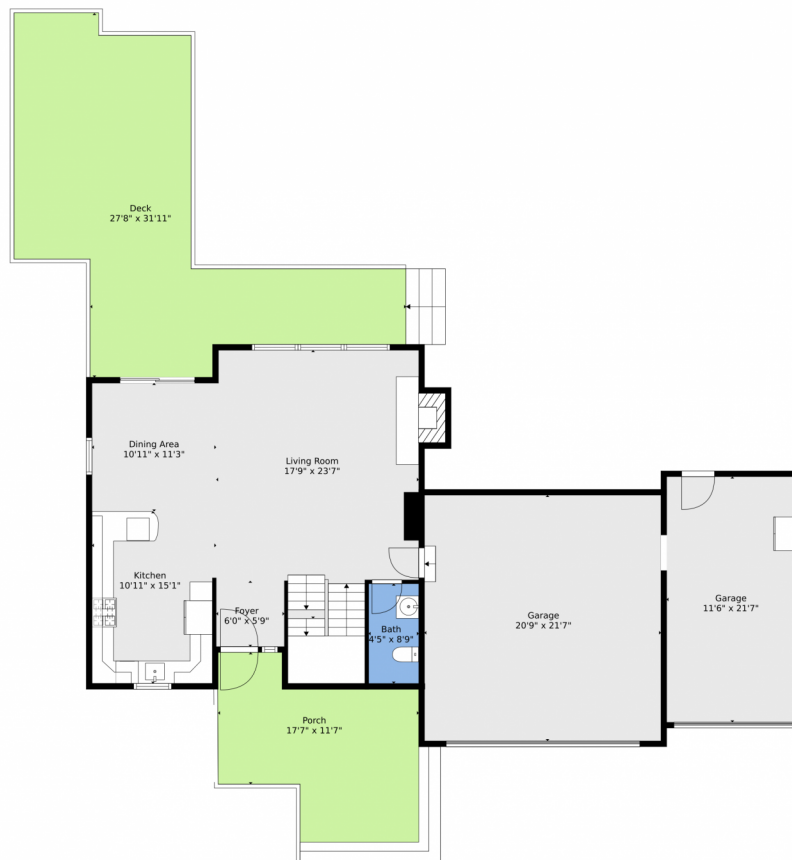
Disclaimer: Sizes and Dimensions are Approximate, Actual May Vary.



**Dana Bossert**  
720-989-1244  
dana@tuppersteam.com



# 4011 S Skyline Drive, Evergreen, CO 80439 — Main



**TOTAL: 2380 sq. ft**  
BELOW GROUND: 506 sq. ft, FLOOR 2: 787 sq. ft, FLOOR 3: 1087 sq. ft  
EXCLUDED AREAS: UTILITY: 193 sq. ft, BALCONY: 338 sq. ft, GARAGE: 695 sq. ft,  
PORCH: 256 sq. ft, DECK: 565 sq. ft, FIREPLACE: 13 sq. ft,  
OPEN TO BELOW: 264 sq. ft  
WALLS: 267 sq. ft

Floor Plan Created By V1photos.com, Measurements Deamed Highly Reliable But Not Guaranteed.



Disclaimer: Sizes and Dimensions are Approximate, Actual May Vary.



**Dana Bossert**  
720-989-1244  
dana@tuppersteam.com

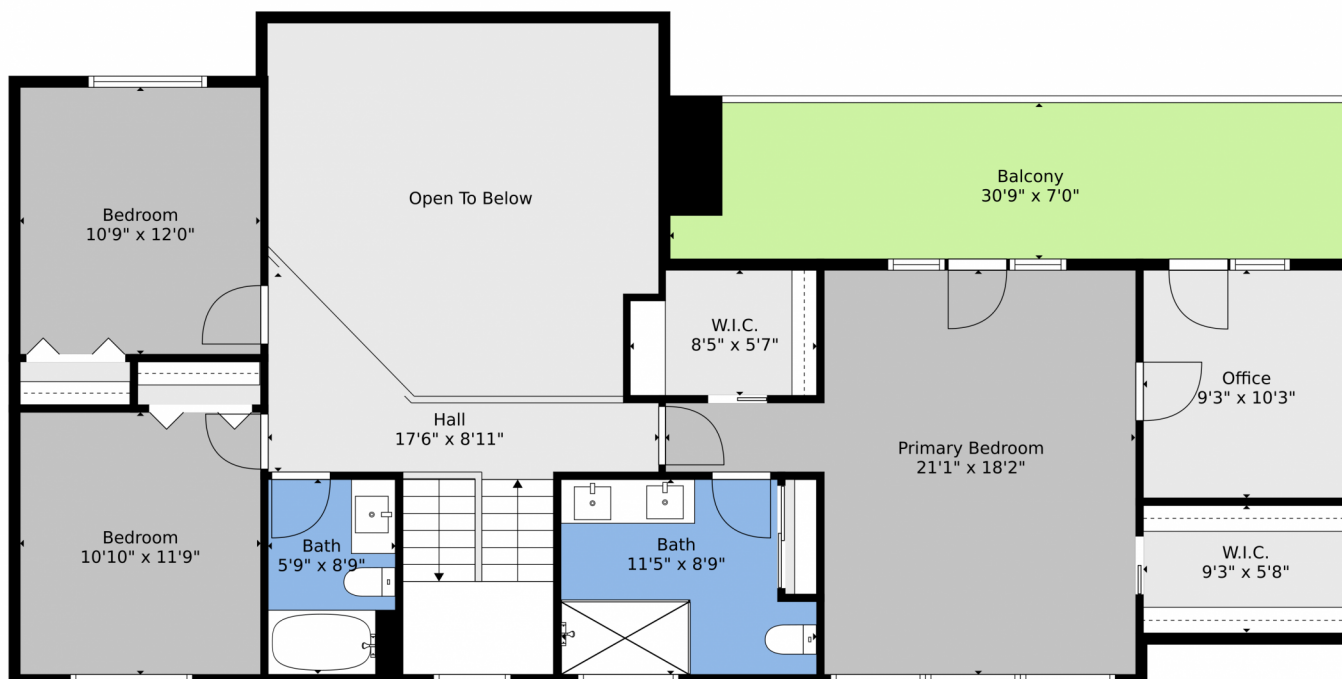


Scan code  
for more  
property  
details





## 4011 S Skyline Drive, Evergreen, CO 80439 – 2nd Level



**TOTAL: 2380 sq. ft**  
BELOW GROUND: 506 sq. ft, FLOOR 2: 787 sq. ft, FLOOR 3: 1087 sq. ft  
EXCLUDED AREAS: UTILITY: 193 sq. ft, BALCONY: 338 sq. ft, GARAGE: 695 sq. ft,  
PORCH: 256 sq. ft, DECK: 565 sq. ft, FIREPLACE: 13 sq. ft,  
OPEN TO BELOW: 264 sq. ft  
WALLS: 267 sq. ft

Floor Plan Created By V1photos.com, Measurements Deamed Highly Reliable But Not Guaranteed.

Disclaimer: Sizes and Dimensions are Approximate, Actual May Vary.



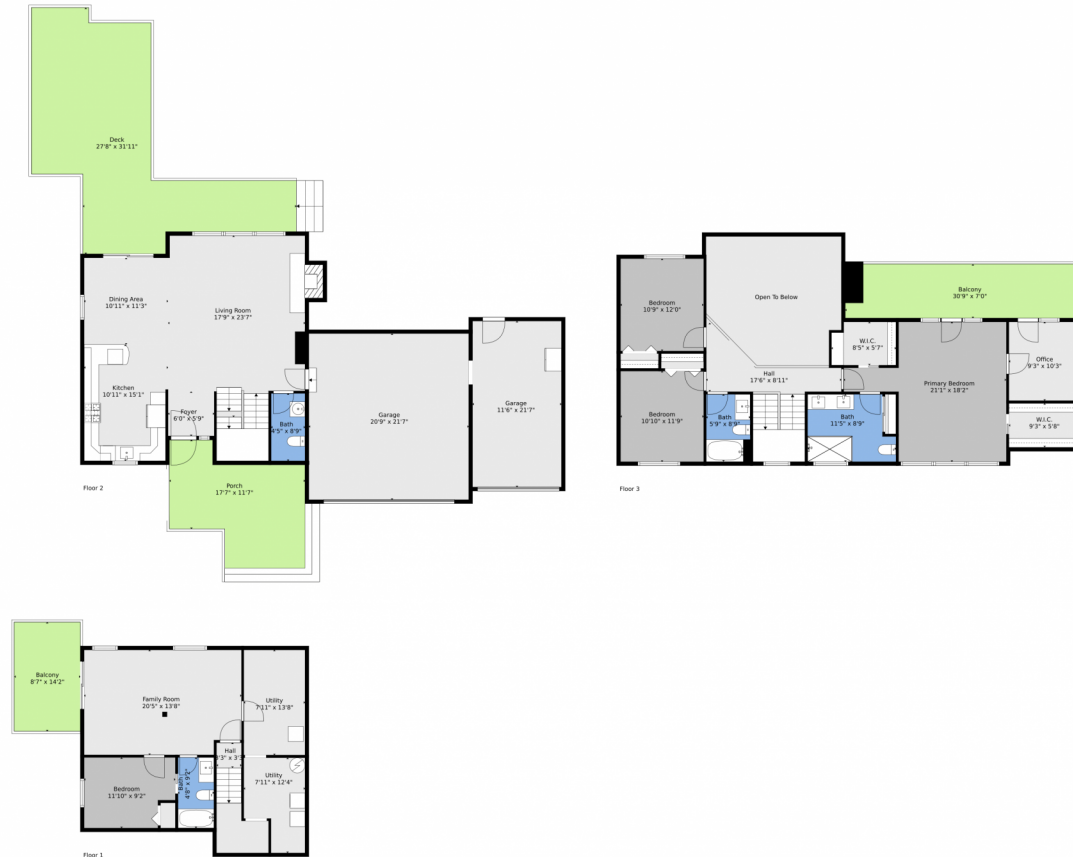
**Dana Bossert**  
720-989-1244  
dana@tuppersteam.com



Scan code  
for more  
property  
details



# 4011 S Skyline Drive, Evergreen, CO 80439 — All Levels



**TOTAL: 2380 sq. ft**  
BELOW GROUND: 506 sq. ft, FLOOR 2: 787 sq. ft, FLOOR 3: 1087 sq. ft  
EXCLUDED AREAS: UTILITY: 193 sq. ft, BALCONY: 338 sq. ft, GARAGE: 695 sq. ft,  
PORCH: 256 sq. ft, DECK: 565 sq. ft, FIREPLACE: 13 sq. ft,  
OPEN TO BELOW: 264 sq. ft  
WALLS: 267 sq. ft

Floor Plan Created By V1photos.com, Measurements Deamed Highly Reliable But Not Guaranteed.



Disclaimer: Sizes and Dimensions are Approximate, Actual May Vary.



**Dana Bossert**  
720-989-1244  
dana@tuppersteam.com



Scan code  
for more  
property  
details

