



2416 15th Avenue  
Greeley, CO 80631  
COMMUNITY: Farris



Single Family



860 SQFT



2 Beds



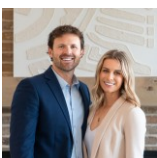
1 Baths



1 Car



0.16 Acre



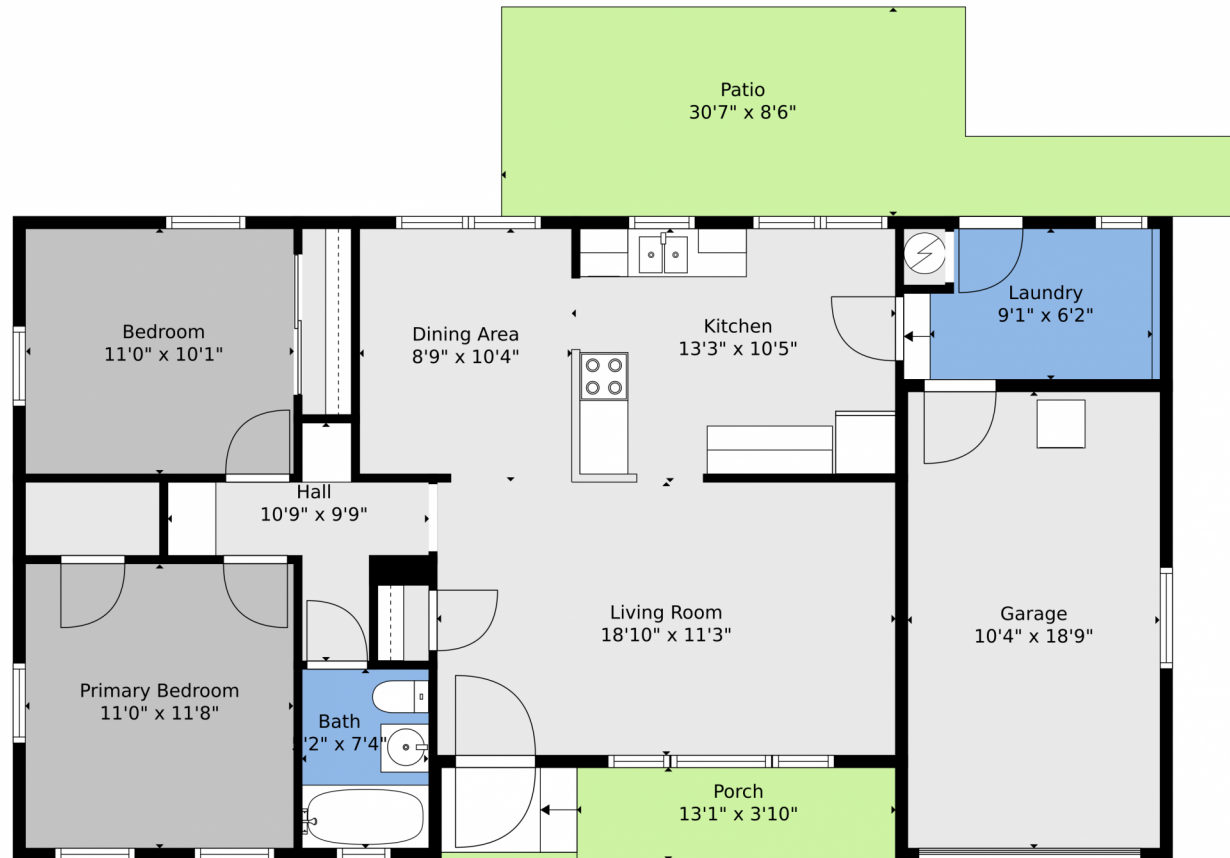
Scott & Carli Nitzel  
970-590-5450  
scott@nexthomefoundations.com



Scan code  
for more  
property  
details



## 2416 15th Avenue, Greeley, CO 80631 — Main

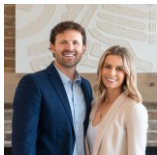


**TOTAL: 903 sq. ft**  
FLOOR 1: 903 sq. ft  
EXCLUDED AREAS: PORCH: 71 sq. ft, PATIO: 202 sq. ft, GARAGE: 194 sq. ft  
WALLS: 90 sq. ft

Floor Plan Created By V1photos.com, Measurements Deamed Highly Reliable But Not Guaranteed.



Disclaimer: Sizes and Dimensions are Approximate, Actual May Vary.



**Scott & Carli Nitzel**  
970-590-5450  
[scott@nexthomefoundations.com](mailto:scott@nexthomefoundations.com)



Scan code  
for more  
property  
details

