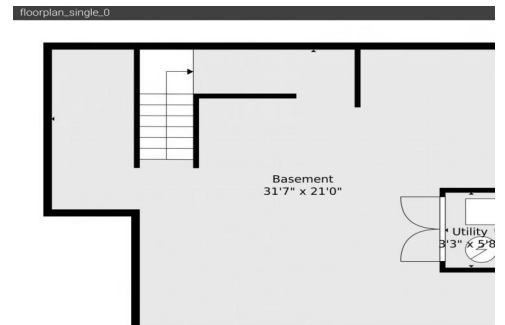
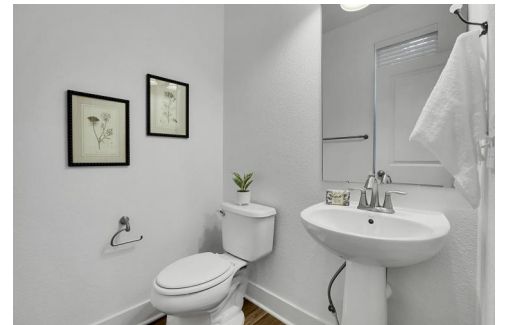






8458 Parkland Street
Broomfield, CO 80021



 Townhouse

 1625 SQFT

 3 Beds

 2/1 Baths

 2 Car



Cameron Kelly
720-202-6272
cameron.colorado@gmail.com



8458 Parkland Street, Broomfield, CO 80021 — Main



TOTAL: 1558 sq. ft
BELOW GROUND: 0 sq. ft, FLOOR 2: 579 sq. ft, FLOOR 3: 979 sq. ft
EXCLUDED AREAS: BASEMENT: 541 sq. ft, UTILITY: 19 sq. ft, GARAGE: 429 sq. ft
WALLS: 209 sq. ft

Floor Plan Created By V1photos.com, Measurements Deamed Highly Reliable But Not Guaranteed.



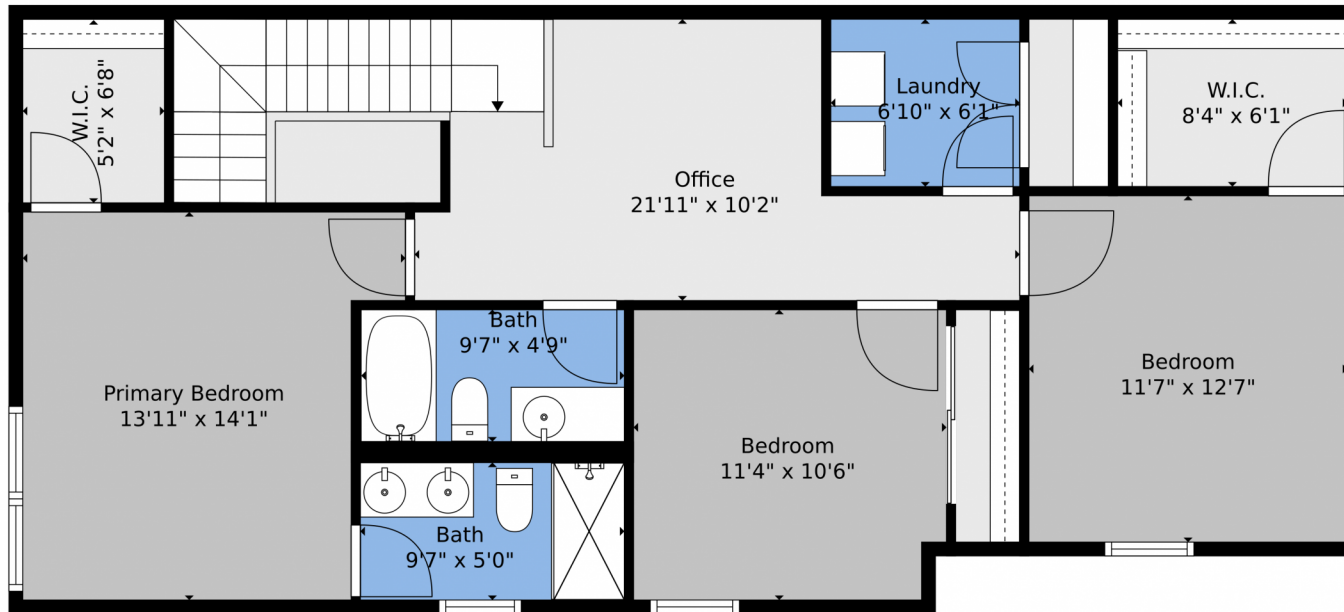
Disclaimer: Sizes and Dimensions are Approximate, Actual May Vary.



Cameron Kelly
720-202-6272
cameron.colorado@gmail.com



8458 Parkland Street, Broomfield, CO 80021 – 2nd Level



TOTAL: 1558 sq. ft
BELOW GROUND: 0 sq. ft, FLOOR 2: 579 sq. ft, FLOOR 3: 979 sq. ft
EXCLUDED AREAS: BASEMENT: 541 sq. ft, UTILITY: 19 sq. ft, GARAGE: 429 sq. ft
WALLS: 209 sq. ft

Floor Plan Created By V1photos.com, Measurements Deamed Highly Reliable But Not Guaranteed.

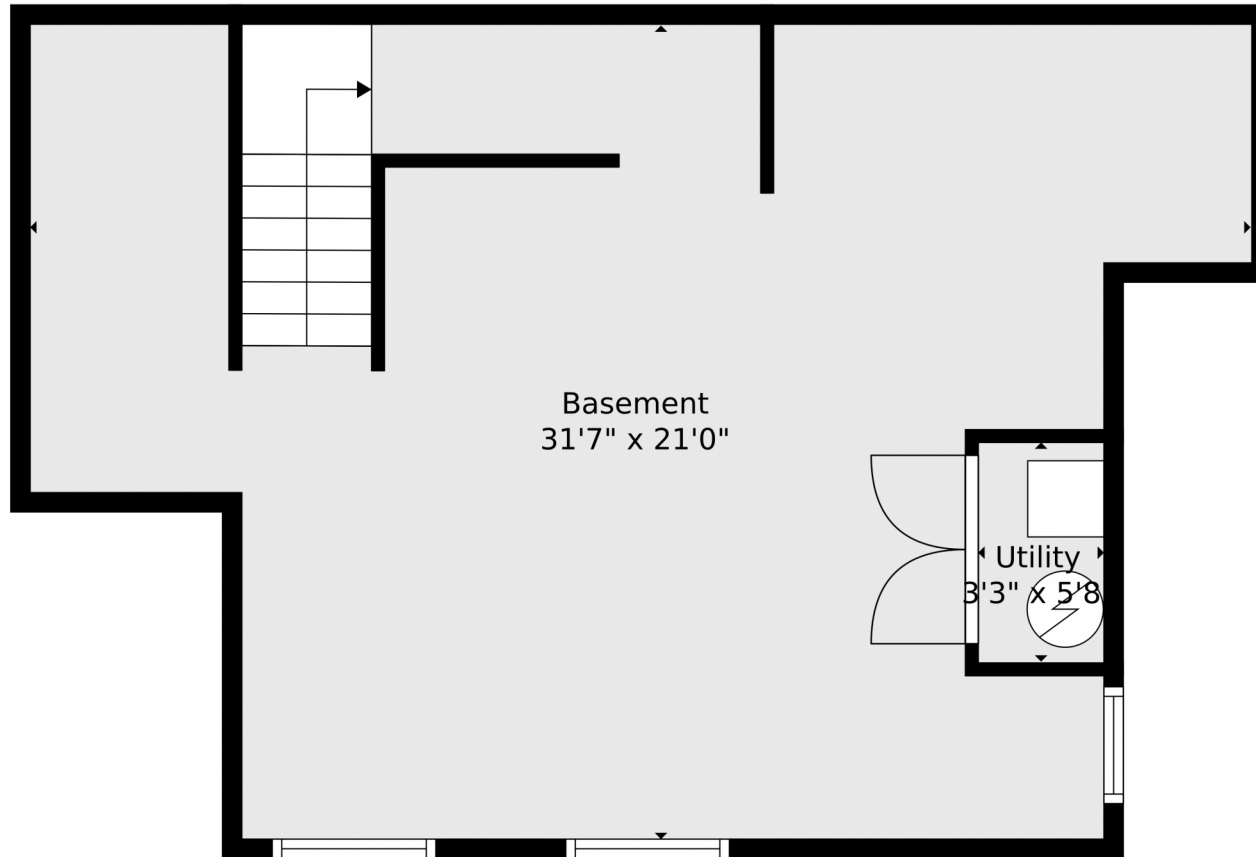


Disclaimer: Sizes and Dimensions are Approximate, Actual May Vary.



Cameron Kelly
720-202-6272
cameron.colorado@gmail.com





TOTAL: 1558 sq. ft
BELOW GROUND: 0 sq. ft, FLOOR 2: 579 sq. ft, FLOOR 3: 979 sq. ft
EXCLUDED AREAS: BASEMENT: 541 sq. ft, UTILITY: 19 sq. ft, GARAGE: 429 sq. ft
WALLS: 209 sq. ft

Floor Plan Created By V1photos.com, Measurements Deamed Highly Reliable But Not Guaranteed.



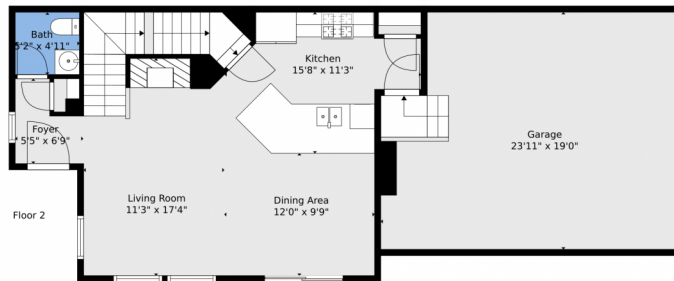
Disclaimer: Sizes and Dimensions are Approximate, Actual May Vary.



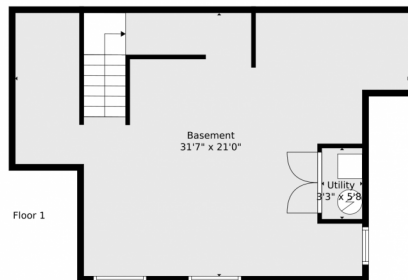
Cameron Kelly
720-202-6272
cameron.colorado@gmail.com



8458 Parkland Street, Broomfield, CO 80021 — All Levels



Floor 3



Floor 1

TOTAL: 1558 sq. ft
BELOW GROUND: 0 sq. ft, FLOOR 2: 579 sq. ft, FLOOR 3: 979 sq. ft
EXCLUDED AREAS: BASEMENT: 541 sq. ft, UTILITY: 19 sq. ft, GARAGE: 429 sq. ft
WALLS: 209 sq. ft

Floor Plan Created By V1photos.com, Measurements Deamed Highly Reliable But Not Guaranteed.



Disclaimer: Sizes and Dimensions are Approximate, Actual May Vary.



Cameron Kelly
720-202-6272
cameron.colorado@gmail.com

