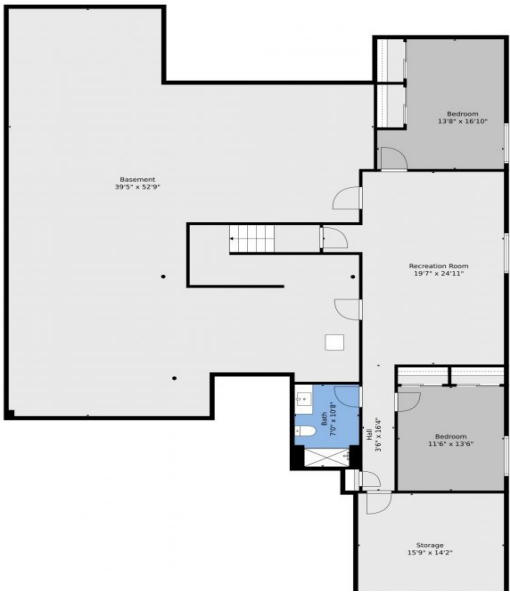


228 Rogers Court
Castle Rock, CO 80104

floorplan_single_0



floorplan_single_1



floorplan_all_0



Single Family



6852 SQFT



Jeremy Shreve
737-346-7396
jeremy.shreve@gmail.com



228 Rogers Court, Castle Rock, CO 80104 – Main



TOTAL: 4188 sq. ft
BELOW GROUND: 991 sq. ft, FLOOR 2: 3197 sq. ft
EXCLUDED AREAS: STORAGE: 221 sq. ft, BASEMENT: 1705 sq. ft, GARAGE: 865 sq. ft,
PORCH: 96 sq. ft, COVERED PATIO: 374 sq. ft, PATIO: 189 sq. ft
WALLS: 327 sq. ft

Floor Plan Created By V1photos.com, Measurements Deamed Highly Reliable But Not Guaranteed.

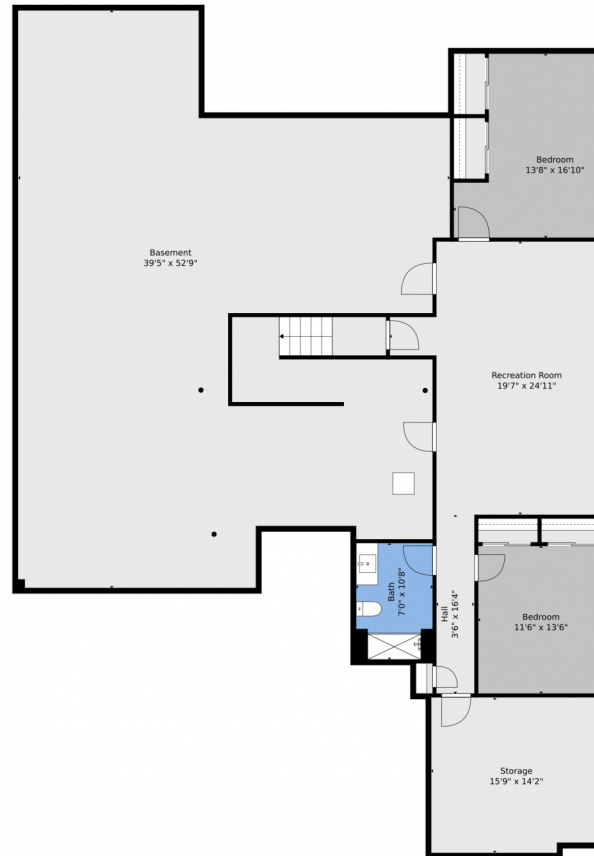


Disclaimer: Sizes and Dimensions are Approximate, Actual May Vary.

Jeremy Shreve
737-346-7396
jeremy.shreve@gmail.com



228 Rogers Court, Castle Rock, CO 80104 – Basement



TOTAL: 4188 sq. ft
BELOW GROUND: 991 sq. ft, FLOOR 2: 3197 sq. ft
EXCLUDED AREAS: STORAGE: 221 sq. ft, BASEMENT: 1705 sq. ft, GARAGE: 865 sq. ft,
PORCH: 96 sq. ft, COVERED PATIO: 374 sq. ft, PATIO: 189 sq. ft
WALLS: 327 sq. ft

Floor Plan Created By V1photos.com, Measurements Deamed Highly Reliable But Not Guaranteed.

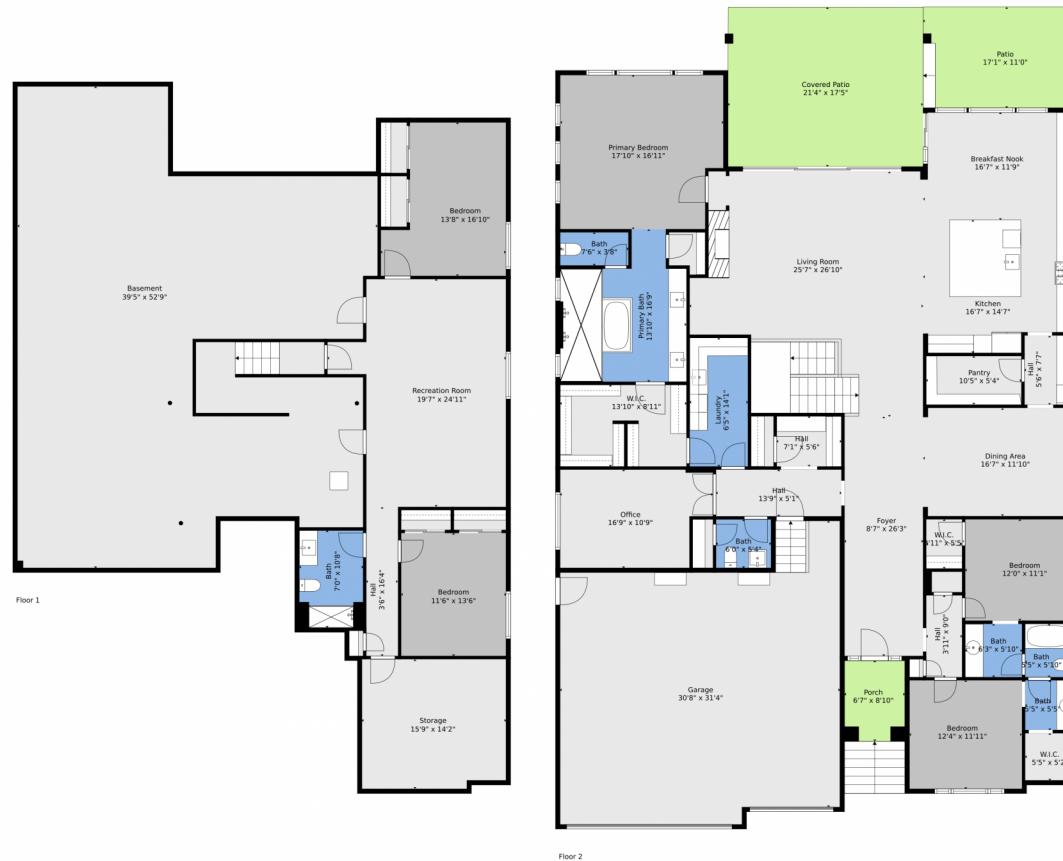


Disclaimer: Sizes and Dimensions are Approximate, Actual May Vary.

Jeremy Shreve
737-346-7396
jeremy.shreve@gmail.com



228 Rogers Court, Castle Rock, CO 80104 – All Levels



TOTAL: 4188 sq. ft
BELOW GROUND: 991 sq. ft, FLOOR 2: 3197 sq. ft
EXCLUDED AREAS: STORAGE: 221 sq. ft, BASEMENT: 1705 sq. ft, GARAGE: 865 sq. ft,
PORCH: 96 sq. ft, COVERED PATIO: 374 sq. ft, PATIO: 189 sq. ft
WALLS: 327 sq. ft

Floor Plan Created By V1photos.com, Measurements Deamed Highly Reliable But Not Guaranteed.



Disclaimer: Sizes and Dimensions are Approximate, Actual May Vary.

Jeremy Shreve
737-346-7396
jeremy.shreve@gmail.com

