



5136 S Pennsylvania Street
Littleton, CO 80121
COMMUNITY: Brookridge Heights

MLS # 1528096
PRICE \$499,000



Single Family



768 SQFT



2 Beds



1 Baths



1 Car



0.17 Acre

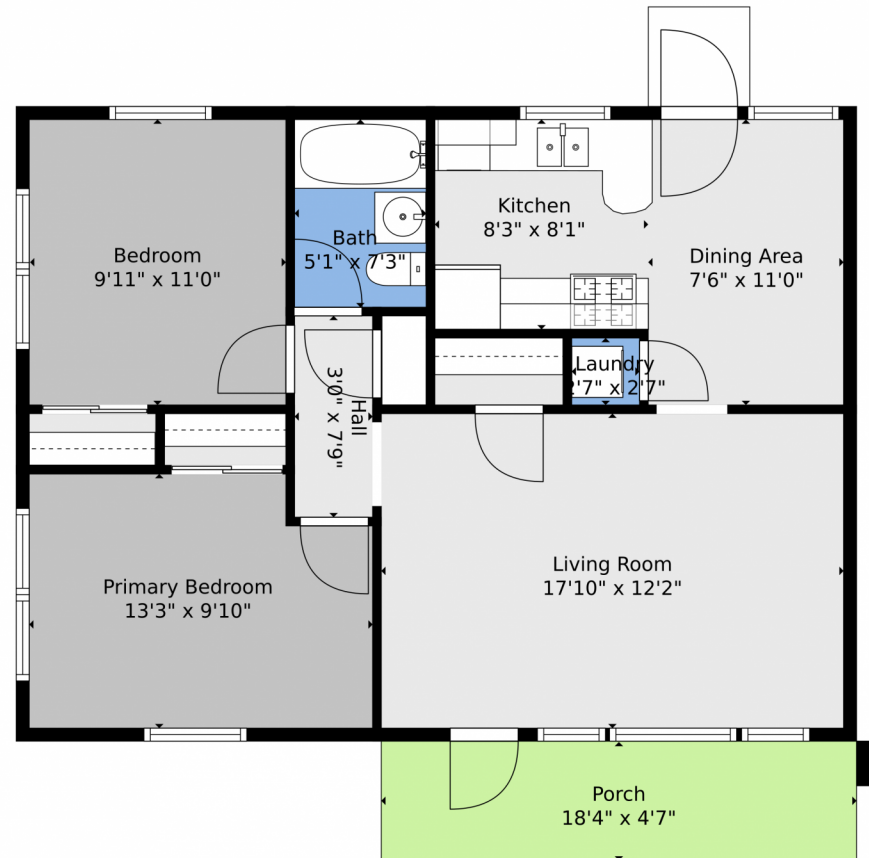


Danna Clark
720-737-3871
dannarclark@gmail.com



Scan code
for more
property
details



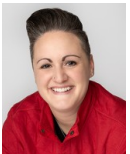


TOTAL: 738 sq. ft
FLOOR 1: 738 sq. ft, FLOOR 2: 0 sq. ft
EXCLUDED AREAS: PORCH: 84 sq. ft, COVERED PATIO: 111 sq. ft
WALLS: 56 sq. ft

Floor Plan Created By V1photos.com, Measurements Deamed Highly Reliable But Not Guaranteed.

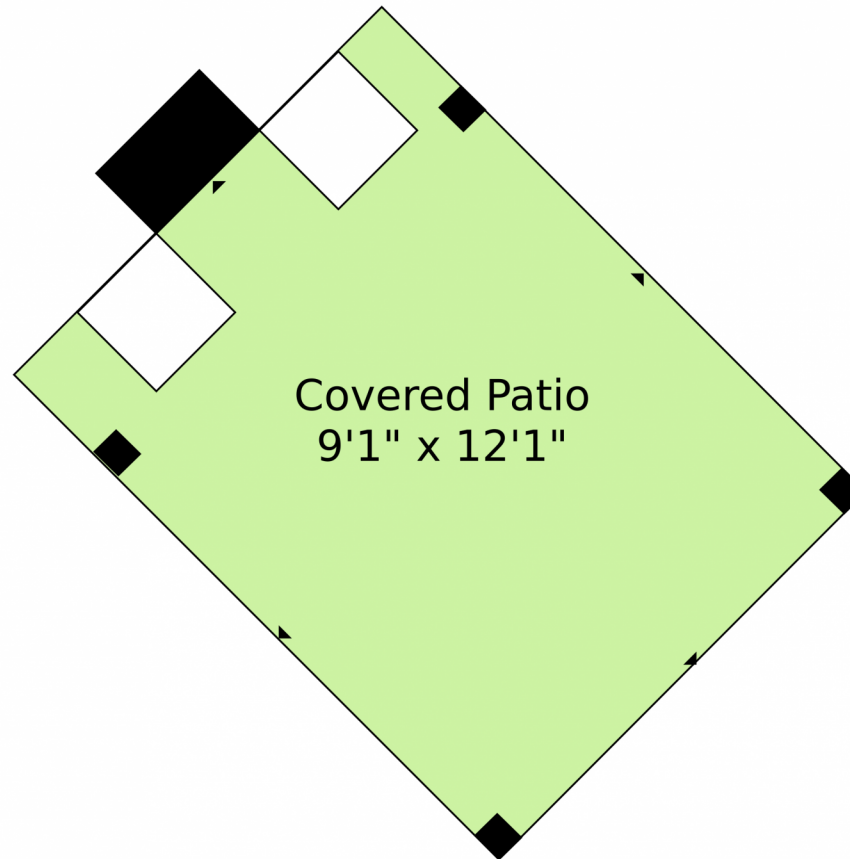


Disclaimer: Sizes and Dimensions are Approximate, Actual May Vary.



Danna Clark
720-737-3871
dannarclark@gmail.com



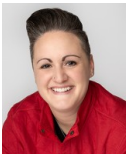


TOTAL: 738 sq. ft
FLOOR 1: 738 sq. ft, FLOOR 2: 0 sq. ft
EXCLUDED AREAS: PORCH: 84 sq. ft, COVERED PATIO: 111 sq. ft
WALLS: 56 sq. ft

Floor Plan Created By V1photos.com, Measurements Deamed Highly Reliable But Not Guaranteed.



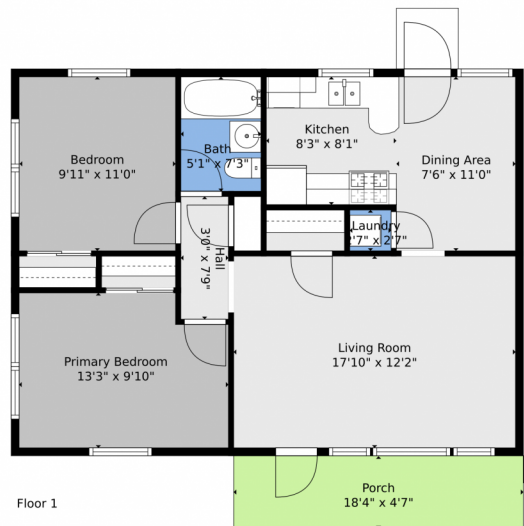
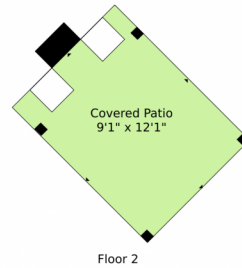
Disclaimer: Sizes and Dimensions are Approximate, Actual May Vary.



Danna Clark
720-737-3871
dannarclark@gmail.com



5136 S Pennsylvania Street, Littleton, CO 80121 — All Levels

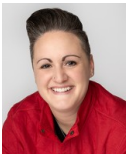


TOTAL: 738 sq. ft
FLOOR 1: 738 sq. ft, FLOOR 2: 0 sq. ft
EXCLUDED AREAS: PORCH: 84 sq. ft, COVERED PATIO: 111 sq. ft
WALLS: 56 sq. ft

Floor Plan Created By V1photos.com, Measurements Deamed Highly Reliable But Not Guaranteed.



Disclaimer: Sizes and Dimensions are Approximate, Actual May Vary.



Danna Clark
720-737-3871
dannarclark@gmail.com

