



1580 N Meade Street
Denver, CO 80204
COMMUNITY: Pierson's Addition

MLS # 7036767

PRICE

\$1,060,000



Other



2543 SQFT



5 Beds



4 Baths



2 Car



0.14 Acre

PROPERTY DETAILS

Just one block from Sloan's Lake, this renovated 1924 brick bungalow combines historic charm with modern upgrades. Remodeled in 2025, the duplex features new electrical, plumbing, and mechanical systems, including energy-efficient heat pumps. The main level has a bright, open floor plan with three bedrooms, two updated bathrooms, and large windows that bring in natural light. The chef's kitchen includes quartz countertops and original hardwood floors. The finished garden-level basement has a separate entrance, a full living area with a fireplace, two bedrooms, and two bathrooms. The outdoor space is designed for low maintenance with xeriscaping, turf, and a stone patio.

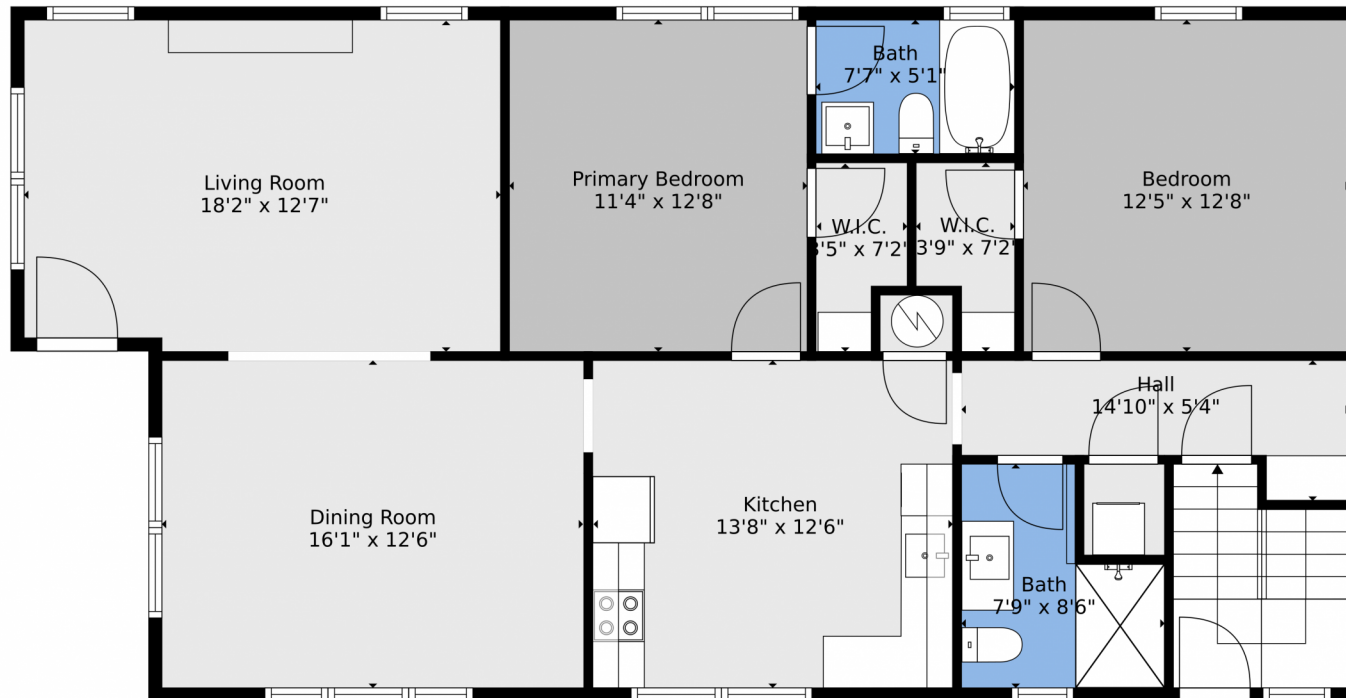


Brian Ketterhagen
303-902-9160
briank@silvercreek-re.com



Scan code
for more
property
details





TOTAL: 2355 sq. ft
BELOW GROUND: 1140 sq. ft, FLOOR 2: 1215 sq. ft
WALLS: 152 sq. ft

Floor Plan Created By V1photos.com, Measurements Deamed Highly Reliable But Not Guaranteed.



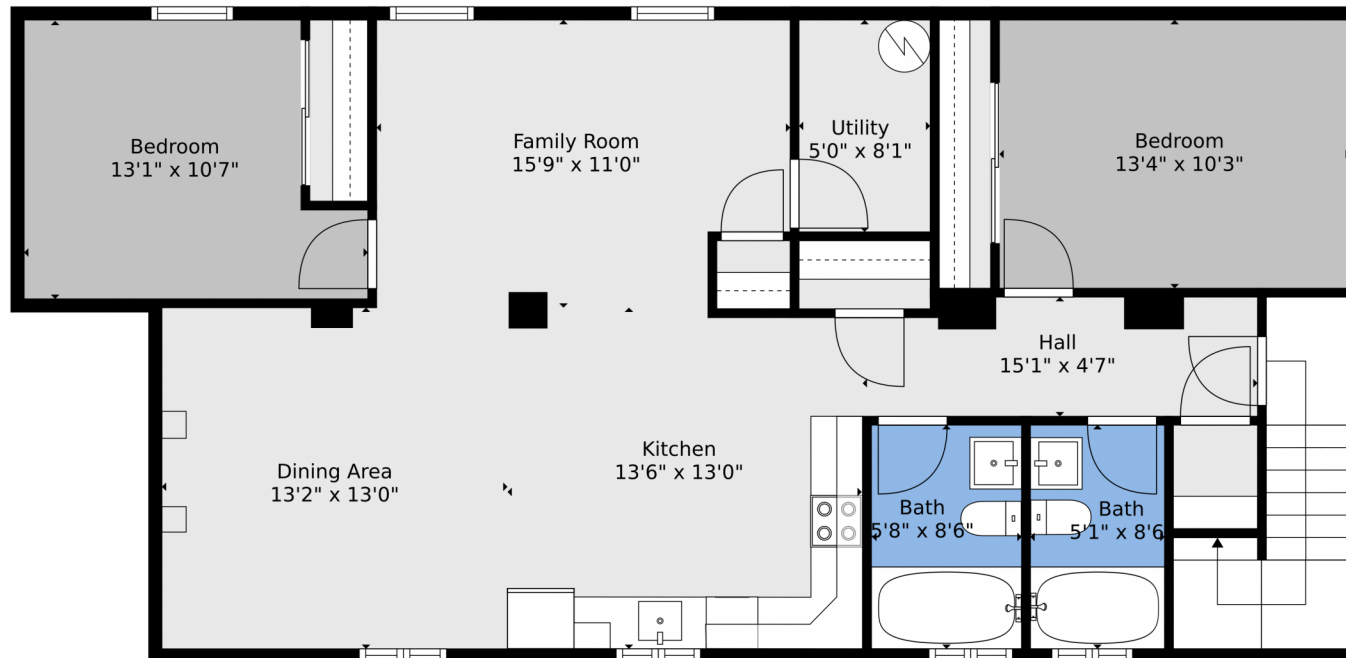
Disclaimer: Sizes and Dimensions are Approximate, Actual May Vary.



Brian Ketterhagen
303-902-9160
briank@silvercreek-re.com



1580 N Meade Street, Denver, CO 80204 — Lower Level



TOTAL: 2355 sq. ft
BELOW GROUND: 1140 sq. ft, FLOOR 2: 1215 sq. ft
WALLS: 152 sq. ft

Floor Plan Created By V1photos.com, Measurements Deamed Highly Reliable But Not Guaranteed.



Disclaimer: Sizes and Dimensions are Approximate, Actual May Vary.



Brian Ketterhagen
303-902-9160
briank@silvercreek-re.com



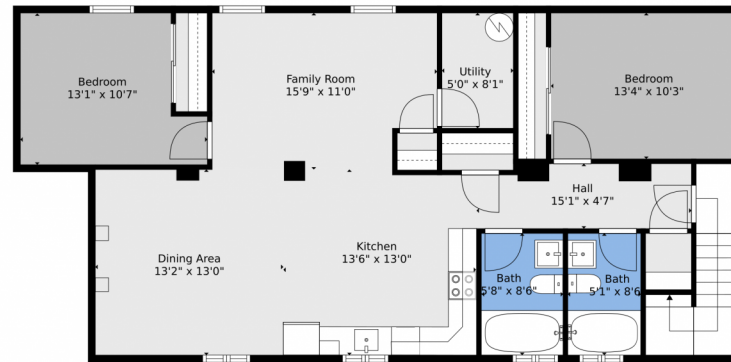
Scan code
for more
property
details



1580 N Meade Street, Denver, CO 80204 — All Levels



Floor 2



Floor 1

TOTAL: 2355 sq. ft
BELOW GROUND: 1140 sq. ft, FLOOR 2: 1215 sq. ft
WALLS: 152 sq. ft

Floor Plan Created By V1photos.com, Measurements Deamed Highly Reliable But Not Guaranteed.



Disclaimer: Sizes and Dimensions are Approximate, Actual May Vary.



Brian Ketterhagen
303-902-9160
briank@silvercreek-re.com

