




 Single Family  1894 SQFT  3 Beds  1/1 Baths  2 Car  0.13 Acre

PROPERTY DETAILS

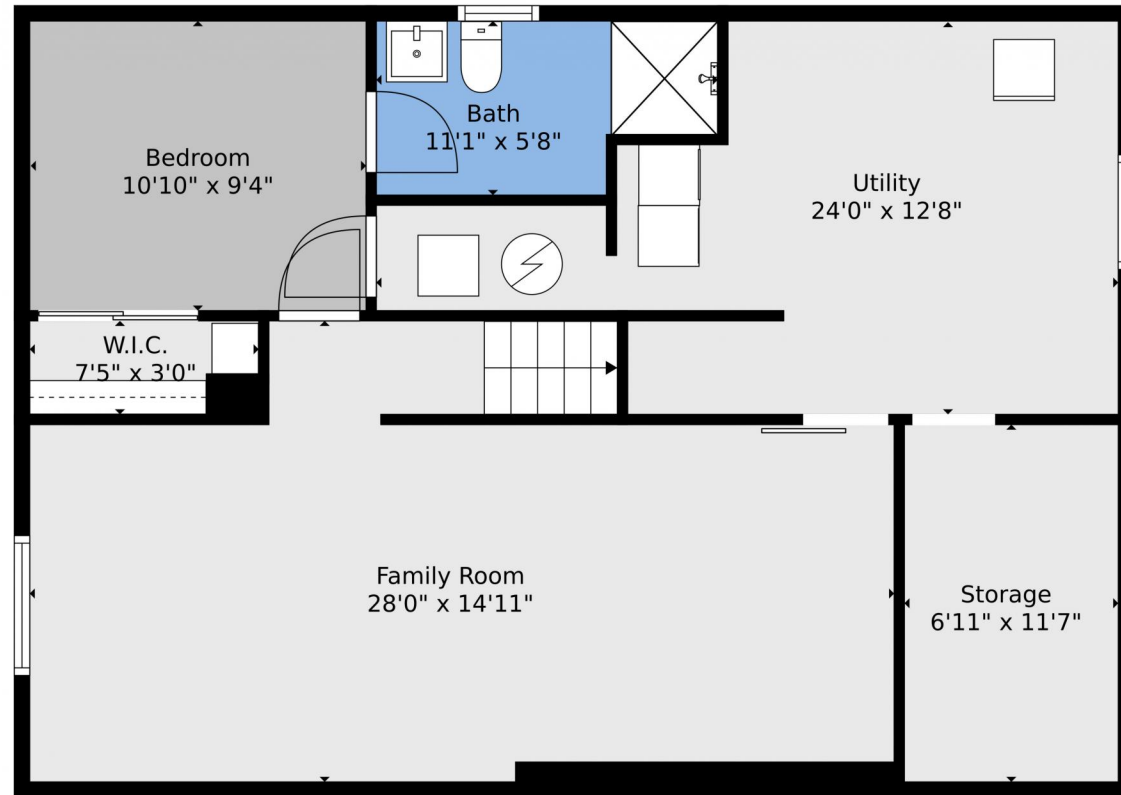
Beautifully Renovated 3-Bedroom Home in Prime Aurora Location! This stunning, move-in-ready home features 3 spacious bedrooms and an open floor plan. It has been completely updated, including a new roof, gutters, fresh paint, new flooring, and a modern HVAC system. The kitchen boasts new cabinetry and flows into the living and dining areas, perfect for entertaining. Enjoy the landscaped yard with a new patio deck, ideal for outdoor gatherings. The fully fenced backyard is great for pets and kids. Located in a friendly neighborhood near parks, trails, shopping, and dining, this home is a must-see. Schedule your showing today!



Diana Nelson
303-887-7491
dianalynn@kw.com



19146 East Oberlin Drive, Aurora, CO 80013 — Lower Level



Floor Plan Created By V1photos.com. Measurements Deamed Highly Reliable But Not Guaranteed.

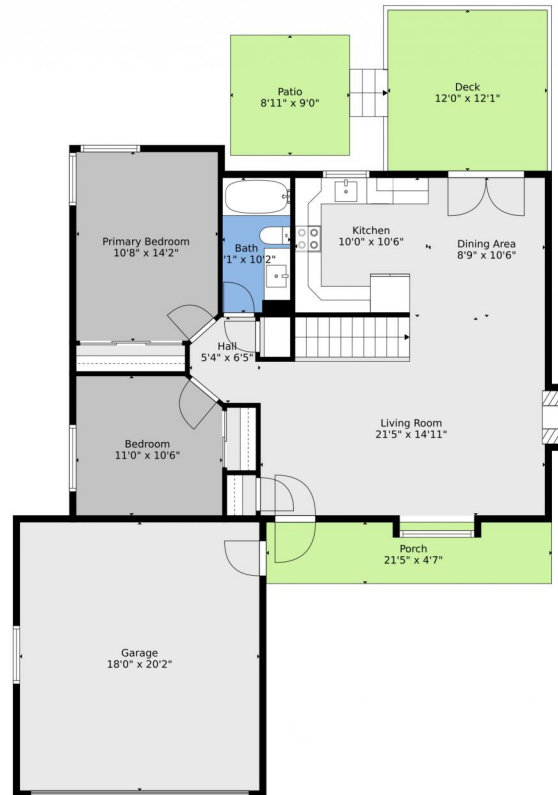
Disclaimer: Sizes and Dimensions are Approximate, Actual May Vary.



Diana Nelson
303-887-7491
dianalynn@kw.com



19146 East Oberlin Drive, Aurora, CO 80013 — Main



Disclaimer: Sizes and Dimensions are Approximate, Actual May Vary.



Diana Nelson
303-887-7491
dianalynn@kw.com



19146 East Oberlin Drive, Aurora, CO 80013 — All Levels



Floor Plan Created By V1photos.com. Measurements Deamed Highly Reliable But Not Guaranteed.



Disclaimer: Sizes and Dimensions are Approximate, Actual May Vary.



Diana Nelson
303-887-7491
dianalynn@kw.com

