



3938 West 102nd Avenue  
Westminster, CO 80031  
COMMUNITY: Hyland Greens East



Single Family



4124 SQFT



4 Beds



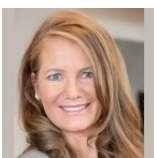
4/1 Baths



3 Car



0.29 Acre



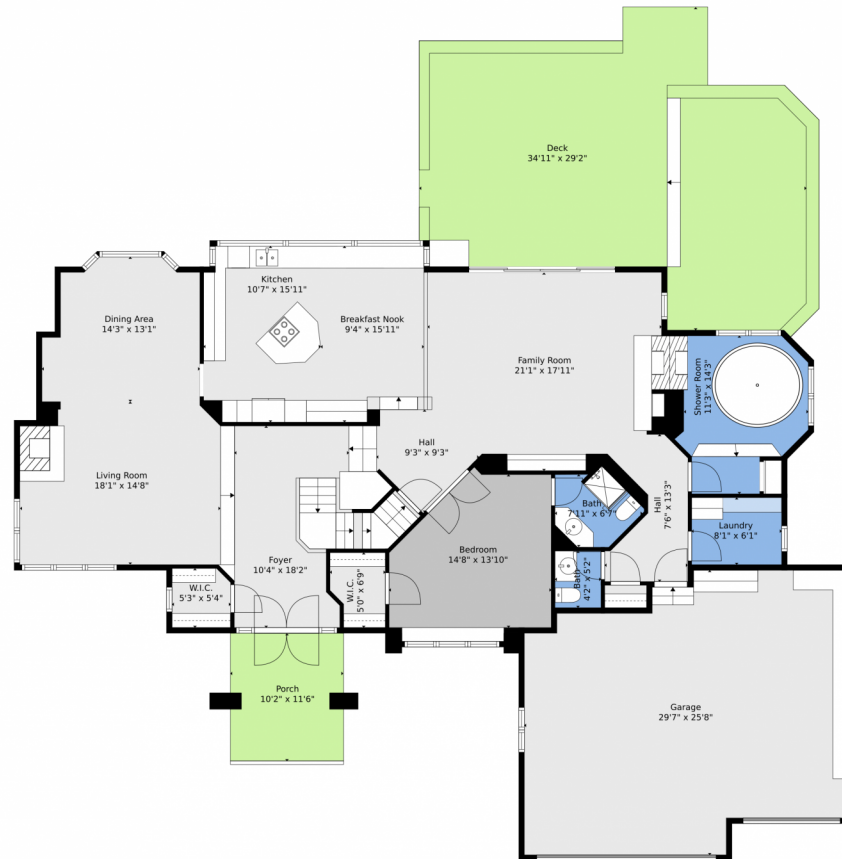
Christina Kern  
303-915-0809  
ckernsells@gmail.com



Scan code  
for more  
property  
details



# 3938 West 102nd Avenue, Westminster, CO 80031 — Main

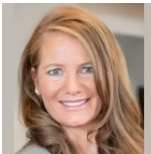


**TOTAL: 4160 sq. ft**  
BELOW GROUND: 484 sq. ft, FLOOR 2: 2036 sq. ft, FLOOR 3: 1640 sq. ft  
EXCLUDED AREAS: STORAGE: 152 sq. ft, BASEMENT: 698 sq. ft, DECK: 789 sq. ft,  
PORCH: 118 sq. ft, GARAGE: 667 sq. ft, OPEN TO BELOW: 426 sq. ft  
WALLS: 333 sq. ft

Floor Plan Created By V1photos.com, Measurements Deamed Highly Reliable But Not Guaranteed.



Disclaimer: Sizes and Dimensions are Approximate, Actual May Vary.



**Christina Kern**  
303-915-0809  
ckernsells@gmail.com



Scan code  
for more  
property  
details



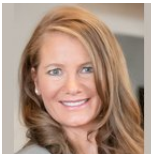
## 3938 West 102nd Avenue, Westminster, CO 80031 — 2nd Level



**TOTAL: 4160 sq. ft**  
BELOW GROUND: 484 sq. ft, FLOOR 2: 2036 sq. ft, FLOOR 3: 1640 sq. ft  
EXCLUDED AREAS: STORAGE: 152 sq. ft, BASEMENT: 698 sq. ft, DECK: 789 sq. ft,  
PORCH: 118 sq. ft, GARAGE: 667 sq. ft, OPEN TO BELOW: 426 sq. ft  
WALLS: 333 sq. ft

Floor Plan Created By V1photos.com, Measurements Deamed Highly Reliable But Not Guaranteed.

Disclaimer: Sizes and Dimensions are Approximate, Actual May Vary.

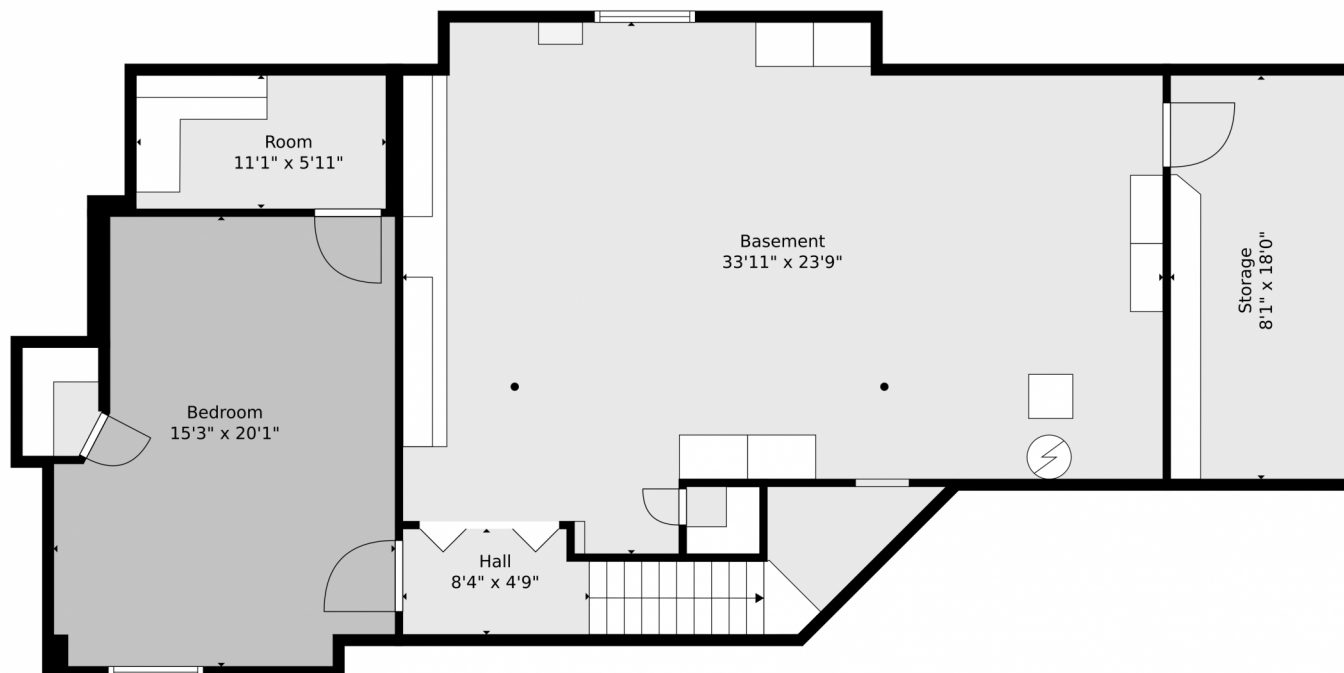


**Christina Kern**  
303-915-0809  
ckernsells@gmail.com





## 3938 West 102nd Avenue, Westminster, CO 80031 — Basement

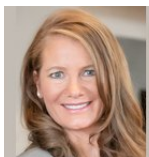


**TOTAL: 4160 sq. ft**  
BELOW GROUND: 484 sq. ft, FLOOR 2: 2036 sq. ft, FLOOR 3: 1640 sq. ft  
EXCLUDED AREAS: STORAGE: 152 sq. ft, BASEMENT: 698 sq. ft, DECK: 789 sq. ft,  
PORCH: 118 sq. ft, GARAGE: 667 sq. ft, OPEN TO BELOW: 426 sq. ft  
WALLS: 333 sq. ft

Floor Plan Created By V1photos.com, Measurements Deamed Highly Reliable But Not Guaranteed.



Disclaimer: Sizes and Dimensions are Approximate, Actual May Vary.



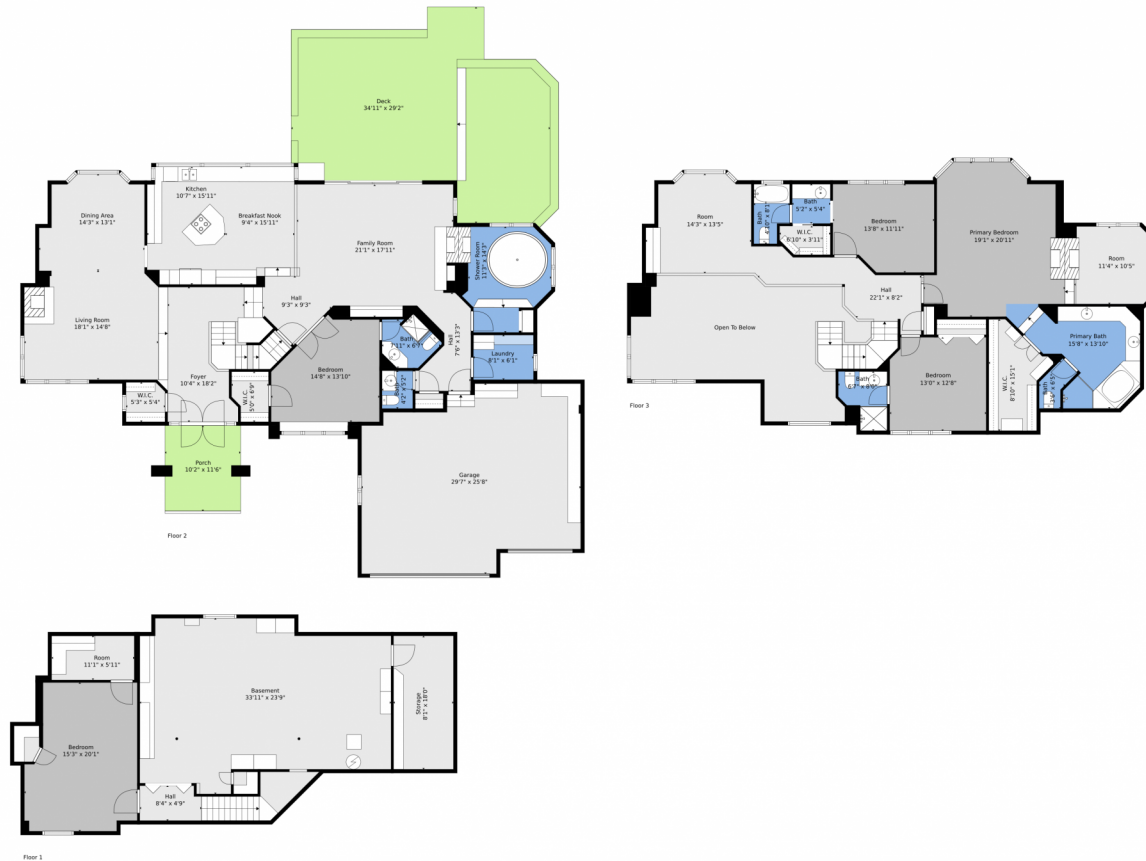
**Christina Kern**  
303-915-0809  
ckernsells@gmail.com



Scan code  
for more  
property  
details



# 3938 West 102nd Avenue, Westminster, CO 80031 — All Levels

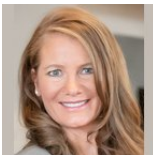


**TOTAL: 4160 sq. ft**  
BELOW GROUND: 484 sq. ft, FLOOR 2: 2036 sq. ft, FLOOR 3: 1640 sq. ft  
EXCLUDED AREAS: STORAGE: 152 sq. ft, BASEMENT: 698 sq. ft, DECK: 789 sq. ft,  
PORCH: 118 sq. ft, GARAGE: 667 sq. ft, OPEN TO BELOW: 426 sq. ft  
WALLS: 333 sq. ft

Floor Plan Created By V1photos.com, Measurements Deamed Highly Reliable But Not Guaranteed.



Disclaimer: Sizes and Dimensions are Approximate, Actual May Vary.



**Christina Kern**  
303-915-0809  
ckernsells@gmail.com

