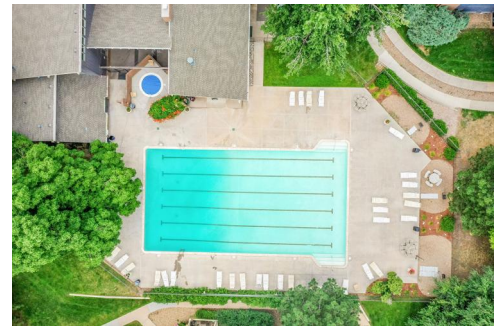




2800 Kalmia Ave #C-103
Boulder, CO 80301
COMMUNITY: Aspen Grove

PRICE \$345,000



Condominium



880 SQFT



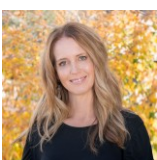
2 Beds



2 Baths

PROPERTY DETAILS

Charming, fully updated garden-level condo in Aspen Grove. This move-in-ready home features 2 bedrooms and 2 baths with low-maintenance laminate wood flooring throughout. The spacious living room includes built-in cabinets and a tiled wood-burning fireplace, perfect for winter. The modern kitchen boasts new white cabinets, quartz counters, and stainless steel appliances. The separate dining room and bar space enhance the entertaining area. The primary suite is bright and features a spa-like bath with a walk-in shower and custom closet. The second bedroom also includes ample storage. Enjoy upgrades like radiant heat flooring and tech features. The complex offers a pool, hot tub, and dog park, plus a reserved parking space. Conveniently located near shopping, dining, and parks with easy access to Highway 36. Don't miss out!



Terri Ellerington

303-929-8116

terri@elevated-team.com

<https://www.remax.com/real-estate-agents/terri-ellerington-louisville-co/10205130>

Scan code
for more
property
details

