



 Single Family  2184 SQFT  4 Beds  3 Baths  2 Car  0.21 Acre



Beth Smart
303-549-6907
beth@bethsmart.com



4722 South Xenia Street, Denver, CO 80237 — Main



TOTAL: 2138 sq. ft
FLOOR 1: 970 sq. ft, FLOOR 2: 1168 sq. ft
EXCLUDED AREAS: FIREPLACE: 13 sq. ft, GARAGE: 447 sq. ft, DECK: 192 sq. ft,
PORCH: 92 sq. ft, PATIO: 799 sq. ft
WALLS: 169 sq. ft

Floor Plan Created By V1photos.com, Measurements Deamed Highly Reliable But Not Guaranteed.



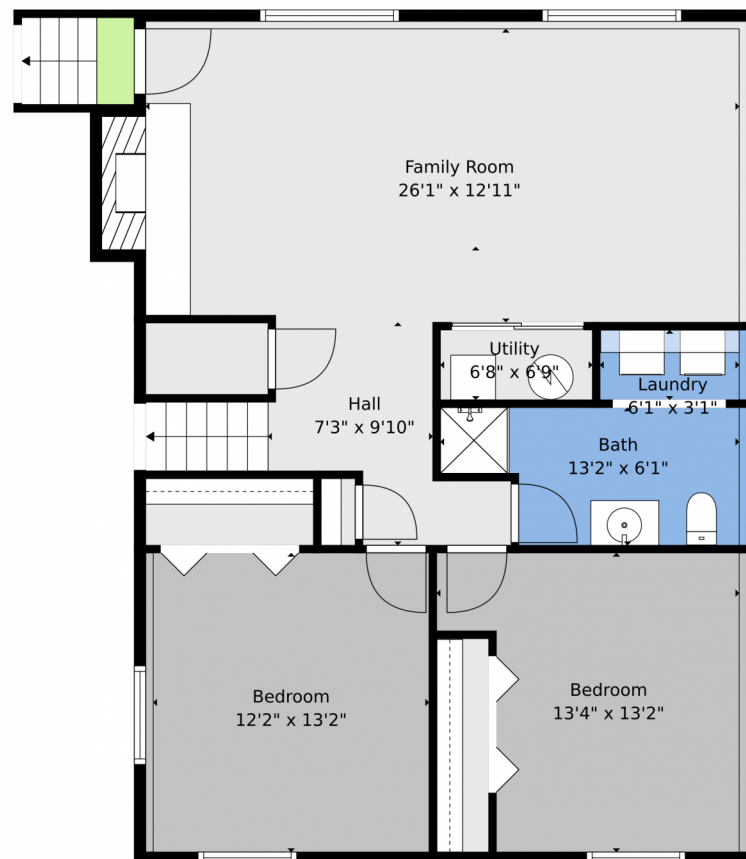
Disclaimer: Sizes and Dimensions are Approximate, Actual May Vary.



Beth Smart
303-549-6907
beth@bethsmart.com



4722 South Xenia Street, Denver, CO 80237 – Lower Level



TOTAL: 2138 sq. ft
FLOOR 1: 970 sq. ft, FLOOR 2: 1168 sq. ft
EXCLUDED AREAS: FIREPLACE: 13 sq. ft, GARAGE: 447 sq. ft, DECK: 192 sq. ft,
PORCH: 92 sq. ft, PATIO: 799 sq. ft
WALLS: 169 sq. ft

Floor Plan Created By V1photos.com, Measurements Deamed Highly Reliable But Not Guaranteed.



Disclaimer: Sizes and Dimensions are Approximate, Actual May Vary.



Beth Smart
303-549-6907
beth@bethsmart.com



Scan code
for more
property
details



4722 South Xenia Street, Denver, CO 80237 – All Levels

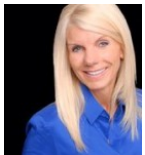


TOTAL: 2138 sq. ft
FLOOR 1: 970 sq. ft, FLOOR 2: 1168 sq. ft
EXCLUDED AREAS: FIREPLACE: 13 sq. ft, GARAGE: 447 sq. ft, DECK: 192 sq. ft,
PORCH: 92 sq. ft, PATIO: 799 sq. ft
WALLS: 169 sq. ft

Floor Plan Created By V1photos.com, Measurements Deamed Highly Reliable But Not Guaranteed.



Disclaimer: Sizes and Dimensions are Approximate, Actual May Vary.



Beth Smart
303-549-6907
beth@bethsmart.com



Scan code
for more
property
details

