


 Single Family

 3684 SQFT

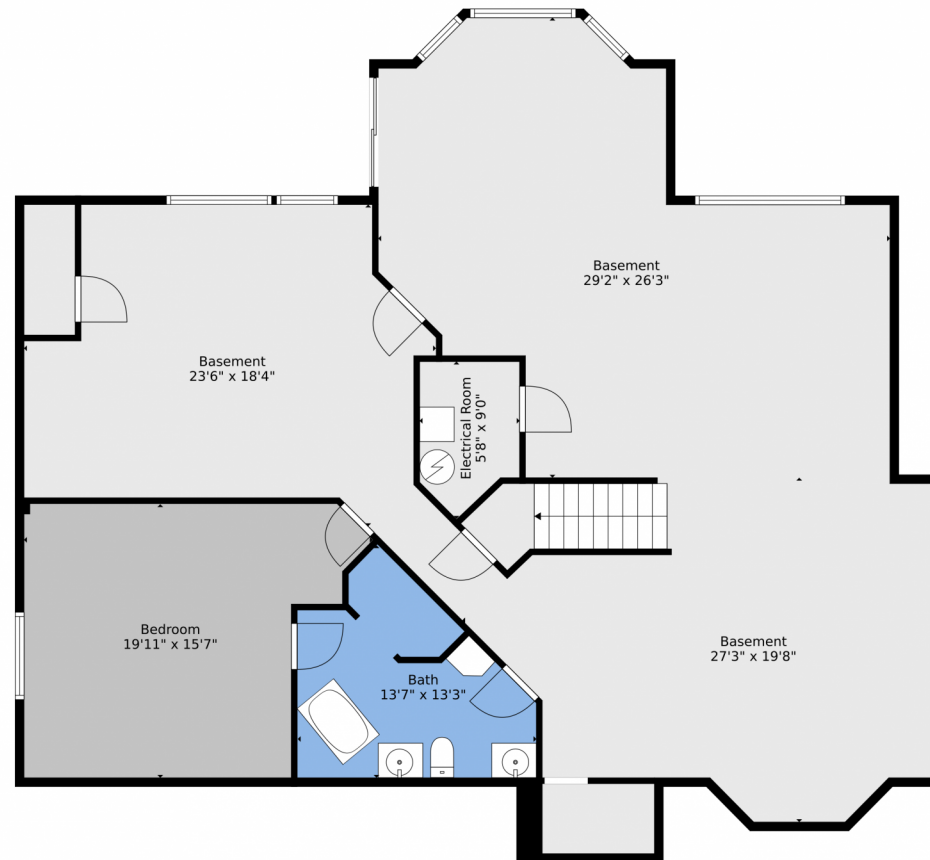
 4 Beds

 4 Baths



Tim Hoyman
303-669-2676
timhoyman@outlook.com





TOTAL: 3387 sq. ft
BELOW GROUND: 0 sq. ft, FLOOR 2: 1870 sq. ft, FLOOR 3: 1517 sq. ft
EXCLUDED AREAS: UNDEFINED: 57 sq. ft, FULL BATH: 140 sq. ft, BEDROOM: 266 sq. ft,
ELECTRICAL ROOM: 53 sq. ft, BASEMENT: 1354 sq. ft, GARAGE: 589 sq. ft,
OPEN TO BELOW: 442 sq. ft
WALLS: 339 sq. ft

Floor Plan Created By V1photos.com, Measurements Deamed Highly Reliable But Not Guaranteed.



Disclaimer: Sizes and Dimensions are Approximate, Actual May Vary.



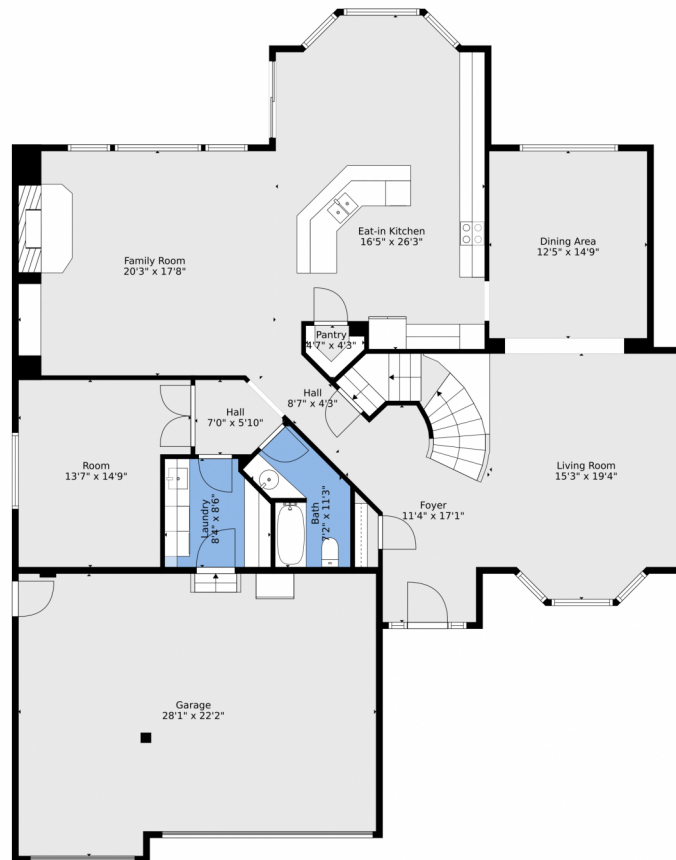
Tim Hoyman
303-669-2676
timhoyman@outlook.com



Scan code
for more
property
details



333 North Snowmass Circle, Superior, CO 80027 — floorplan_single_1



TOTAL: 3387 sq. ft
BELOW GROUND: 0 sq. ft, FLOOR 2: 1870 sq. ft, FLOOR 3: 1517 sq. ft
EXCLUDED AREAS: UNDEFINED: 57 sq. ft, FULL BATH: 140 sq. ft, BEDROOM: 266 sq. ft,
ELECTRICAL ROOM: 53 sq. ft, BASEMENT: 1354 sq. ft, GARAGE: 589 sq. ft,
OPEN TO BELOW: 442 sq. ft
WALLS: 339 sq. ft

Floor Plan Created By V1photos.com, Measurements Deamed Highly Reliable But Not Guaranteed.



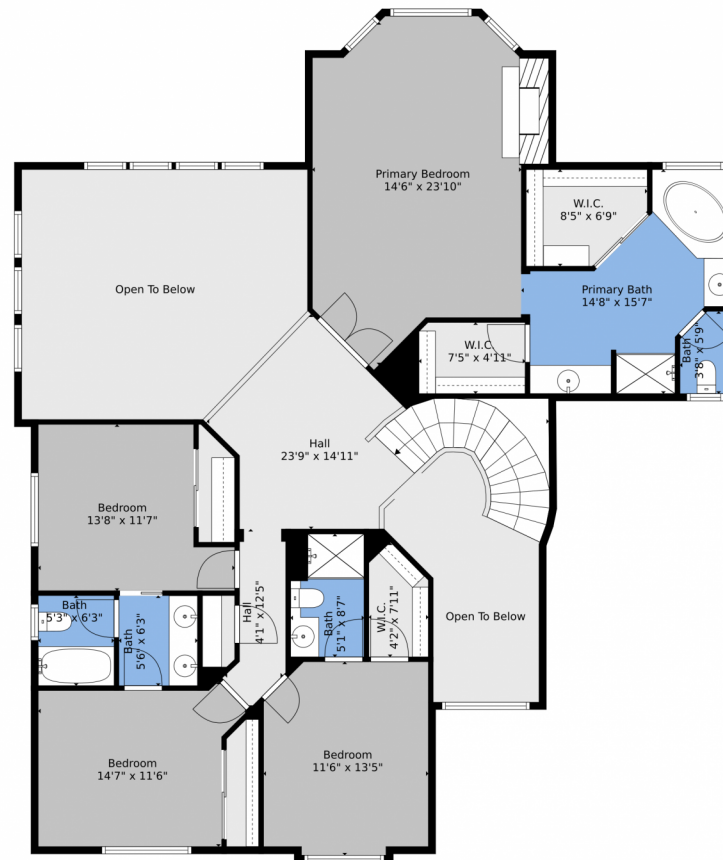
Disclaimer: Sizes and Dimensions are Approximate, Actual May Vary.



Tim Hoyman
303-669-2676
timhoyman@outlook.com



333 North Snowmass Circle, Superior, CO 80027 — floorplan_single_2



TOTAL: 3387 sq. ft
BELOW GROUND: 0 sq. ft, FLOOR 2: 1870 sq. ft, FLOOR 3: 1517 sq. ft
EXCLUDED AREAS: UNDEFINED: 57 sq. ft, FULL BATH: 140 sq. ft, BEDROOM: 266 sq. ft,
ELECTRICAL ROOM: 53 sq. ft, BASEMENT: 1354 sq. ft, GARAGE: 589 sq. ft,
OPEN TO BELOW: 442 sq. ft
WALLS: 339 sq. ft

Floor Plan Created By V1photos.com, Measurements Deamed Highly Reliable But Not Guaranteed.



Disclaimer: Sizes and Dimensions are Approximate, Actual May Vary.



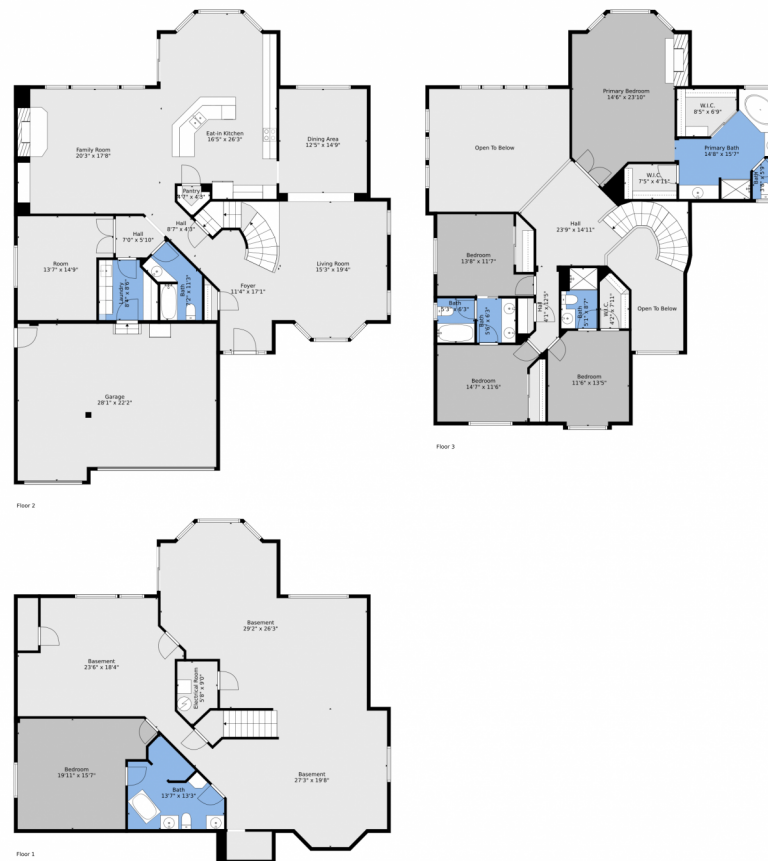
Tim Hoyman
303-669-2676
timhoyman@outlook.com



Scan code
for more
property
details



333 North Snowmass Circle, Superior, CO 80027 — floorplan_all_0



TOTAL: 3387 sq. ft
BELOW GROUND: 0 sq. ft, FLOOR 2: 1870 sq. ft, FLOOR 3: 1517 sq. ft
EXCLUDED AREAS: UNDEFINED: 57 sq. ft, FULL BATH: 140 sq. ft, BEDROOM: 266 sq. ft,
ELECTRICAL ROOM: 53 sq. ft, BASEMENT: 1354 sq. ft, GARAGE: 589 sq. ft,
OPEN TO BELOW: 442 sq. ft
WALLS: 339 sq. ft

Floor Plan Created By V1photos.com, Measurements Deamed Highly Reliable But Not Guaranteed.



Disclaimer: Sizes and Dimensions are Approximate, Actual May Vary.



Tim Hoyman
303-669-2676
timhoyman@outlook.com



Scan code
for more
property
details

