



Single Family



1855 SQFT



3 Beds



2/1 Baths



Taylor Haas

303-665-7368

taylorh@coloradorpm.com

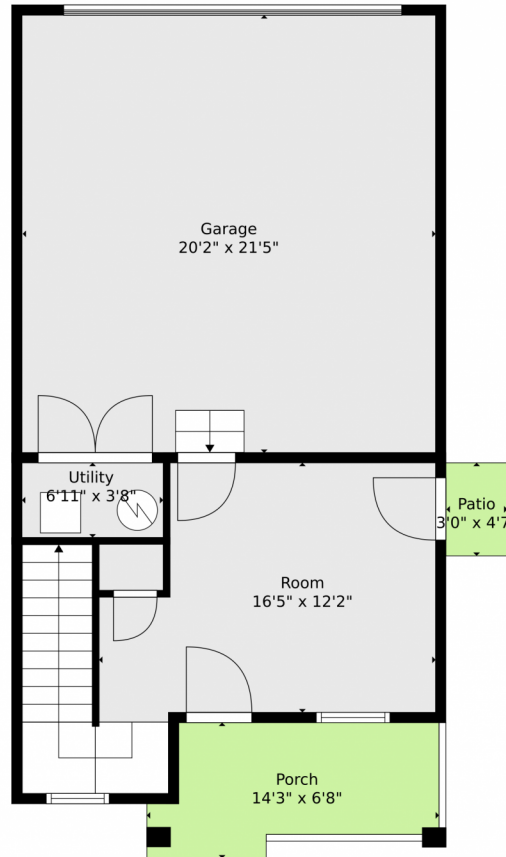
<https://www.coloradorpm.com/available-rental-properties-denver>



Scan code
for more
property
details



2350 South Troy Court, Aurora, CO 80014 – Lower Level



TOTAL: 1734 sq. ft
BELOW GROUND: 250 sq. ft, FLOOR 2: 716 sq. ft, FLOOR 3: 768 sq. ft
EXCLUDED AREAS: UTILITY: 25 sq. ft, GARAGE: 432 sq. ft, PORCH: 79 sq. ft,
PATIO: 14 sq. ft, BALCONY: 72 sq. ft
WALLS: 151 sq. ft

Floor Plan Created By V1photos.com, Measurements Deamed Highly Reliable But Not Guaranteed.



Disclaimer: Sizes and Dimensions are Approximate, Actual May Vary.



Taylor Haas

303-665-7368

taylorh@coloradorm.com

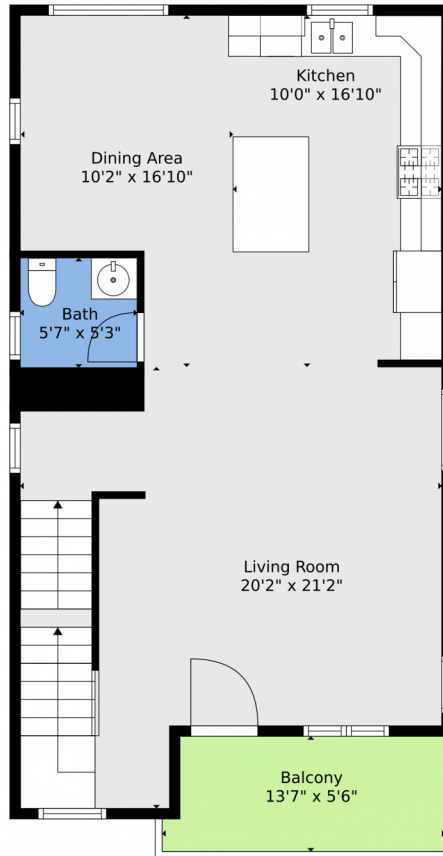
<https://www.coloradorm.com/available-rental-properties-denver>



Scan code
for more
property
details



2350 South Troy Court, Aurora, CO 80014 — Main



TOTAL: 1734 sq. ft
BELOW GROUND: 250 sq. ft, FLOOR 2: 716 sq. ft, FLOOR 3: 768 sq. ft
EXCLUDED AREAS: UTILITY: 25 sq. ft, GARAGE: 432 sq. ft, PORCH: 79 sq. ft,
PATIO: 14 sq. ft, BALCONY: 72 sq. ft
WALLS: 151 sq. ft

Floor Plan Created By V1photos.com, Measurements Deamed Highly Reliable But Not Guaranteed.



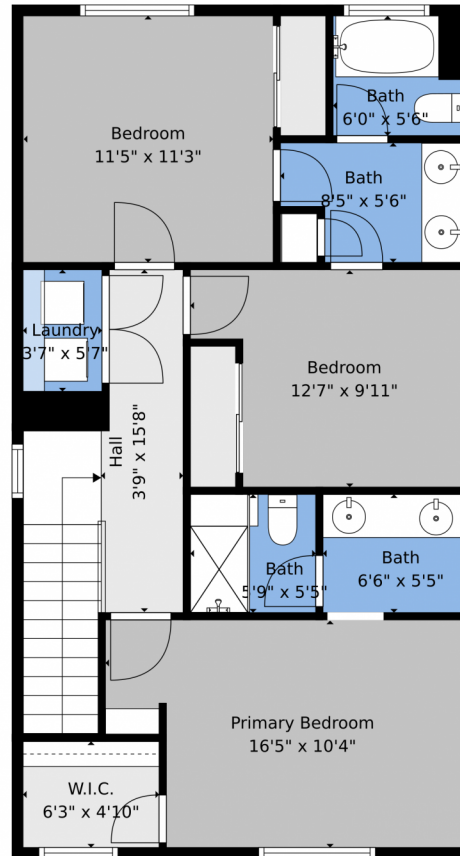
Disclaimer: Sizes and Dimensions are Approximate, Actual May Vary.



Taylor Haas
303-665-7368
taylorh@coloradorpm.com
<https://www.coloradorpm.com/available-rental-properties-denver>



2350 South Troy Court, Aurora, CO 80014 – 2nd Level



TOTAL: 1734 sq. ft
BELOW GROUND: 250 sq. ft, FLOOR 2: 716 sq. ft, FLOOR 3: 768 sq. ft
EXCLUDED AREAS: UTILITY: 25 sq. ft, GARAGE: 432 sq. ft, PORCH: 79 sq. ft,
PATIO: 14 sq. ft, BALCONY: 72 sq. ft
WALLS: 151 sq. ft

Floor Plan Created By V1photos.com, Measurements Deamed Highly Reliable But Not Guaranteed.



Disclaimer: Sizes and Dimensions are Approximate, Actual May Vary.



Taylor Haas

303-665-7368

taylorh@coloradorpm.com

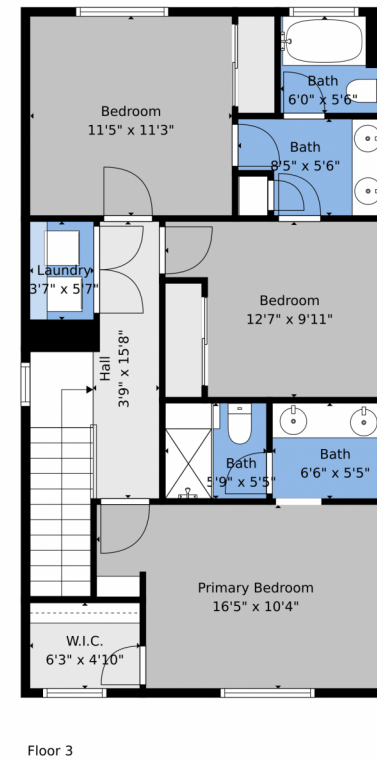
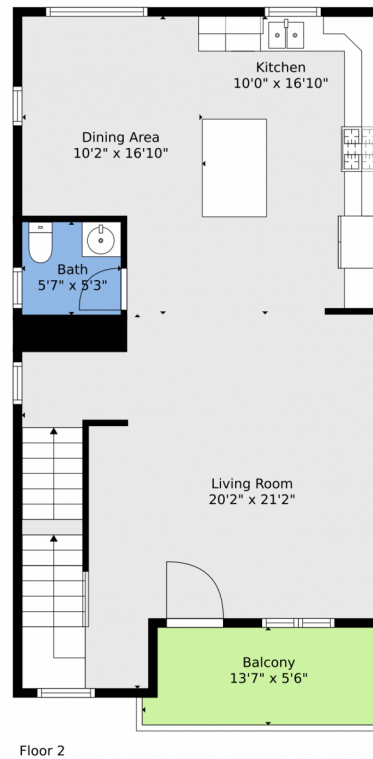
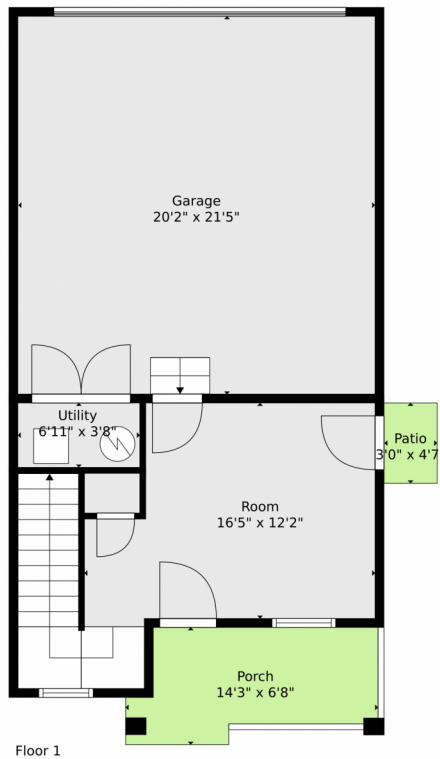
<https://www.coloradorpm.com/available-rental-properties-denver>



Scan code
for more
property
details



2350 South Troy Court, Aurora, CO 80014 – All Levels



TOTAL: 1734 sq. ft
 BELOW GROUND: 250 sq. ft, FLOOR 2: 716 sq. ft, FLOOR 3: 768 sq. ft
 EXCLUDED AREAS: UTILITY: 25 sq. ft, GARAGE: 432 sq. ft, PORCH: 79 sq. ft,
 PATIO: 14 sq. ft, BALCONY: 72 sq. ft
 WALLS: 151 sq. ft

Floor Plan Created By V1photos.com, Measurements Deamed Highly Reliable But Not Guaranteed.



Disclaimer: Sizes and Dimensions are Approximate, Actual May Vary.



Taylor Haas
 303-665-7368
 taylorh@coloradorpm.com
<https://www.coloradorpm.com/available-rental-properties-denver>



Scan code
 for more
 property
 details

